



# FreePattern<sup>®</sup>

[rotating carpet tiles]

FreePattern Rotating Carpet Tiles<sup>®</sup> Collection is the only modular floor covering specifically designed to allow a multitude of patterns to be created or no pattern at all. By grouping a few tiles and then repeating the group on the floor, a unique pattern emerges. Change the group, and likewise the pattern changes. By contrast, install the tiles with random rotations and a pattern-free floor covering can be achieved. And with StayTac<sup>®</sup> non-adhesive installation system, the floor design can be changed at any time, only with FreePattern<sup>®</sup>.

FreePattern<sup>®</sup> tiles are durable, stain resistant, and commercially rated. The attached cushion is the foundation of the product and provides exceptional comfort and resistance. This PVC-free polyurethane back is engineered to absorb rolling and foot traffic, minimizing the wear of face yarn and eliminating the possibility of buckling and restretch problems. Thus, the appearance retention and overall usable life of the carpet is greatly extended. The attached cushion also features a waterproof barrier between the carpet and pad.

In addition, the StayTac<sup>®</sup> coating applied to the carpet backing provides a high friction component preventing lateral movement of the tile, yet the vertical grip is such that the tile can be easily rotated, removed, or replaced. Performance is exceptional with no loss of tack of the adhesive over time. StayTac<sup>®</sup> streamlines the installation process by eliminating the cost and time associated with applying traditional wet adhesives.

FreePattern<sup>®</sup> offers distinct advantages over traditional patterned broadloom in that it can be installed and removed individually or in sections. This characteristic allows a high degree of flexibility when creating patterns, designs, accents, borders, area rug effects, and most importantly, an inexpensive and unobtrusive solution to replacement due to major damage.

FreePattern Rotating Carpet Tiles<sup>®</sup> with StayTac<sup>®</sup> is the most versatile, cost effective, and environmentally friendly modular carpet system available today.



# StayTac®

StayTac® is a patented innovation for installing Joy Carpets' modular carpet without the use of wet adhesives, floor sealers, or primers. StayTac® is a high-friction coating applied to the backing that prevents lateral movement of the carpet tile while making it easy to lift tiles for replacement or underfloor access. This technology is a superior solution compared to "peel and stick" and traditional wet adhesive systems.

Advantages include:

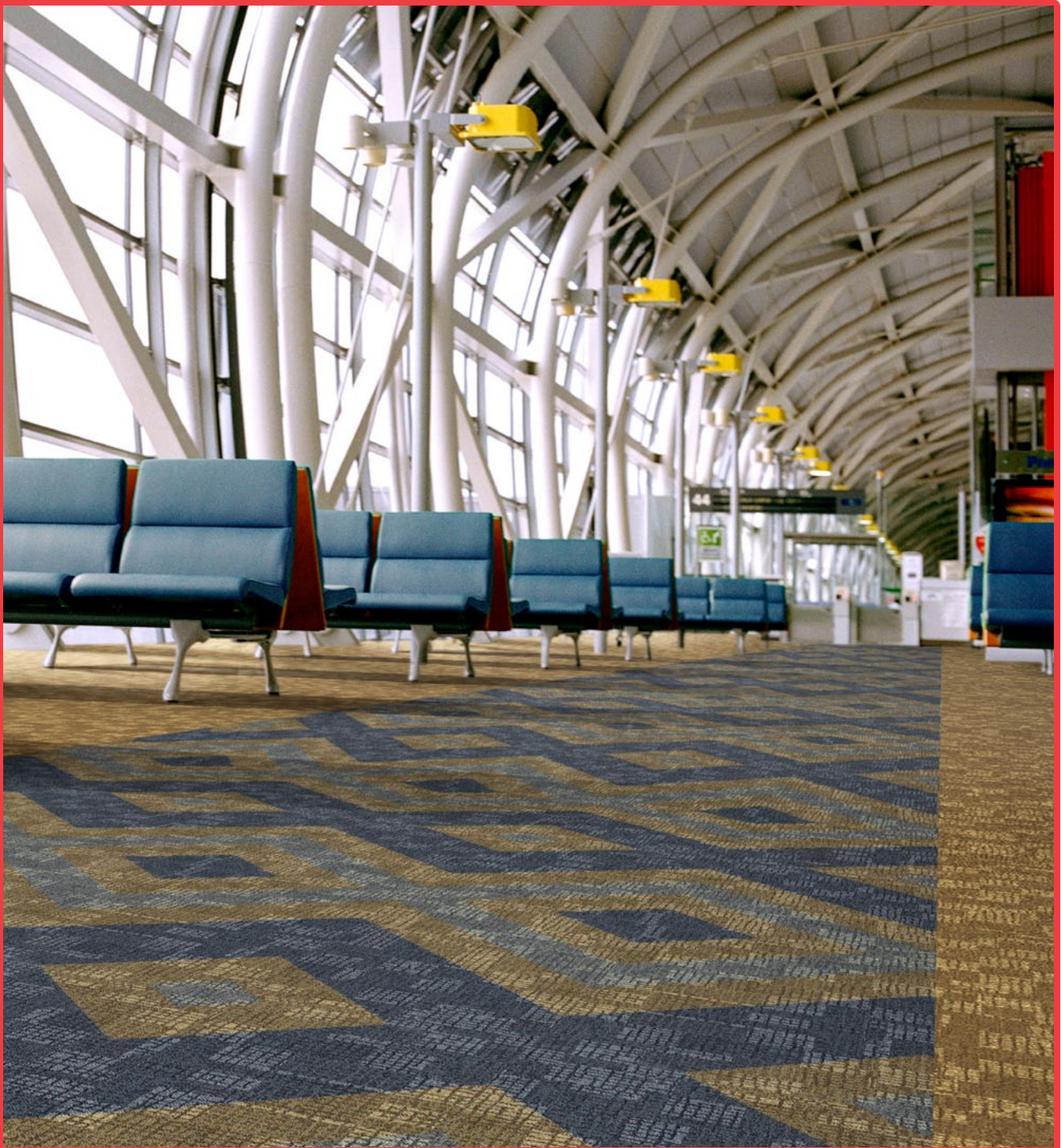
1. The lateral grip of StayTac® assures the modular carpet stays in place, yet the vertical grip is such that a tile can be easily removed or replaced. The performance is exceptional with no movement under wheeled traffic or at transition points.
2. There is no loss of tack of the adhesive over time.
3. StayTac® eliminates the need to spread wet adhesive on the floor.
4. There is no drying time for adhesive required.
5. Carpet is easier to remove over time, as it does not become permanently adhered to the floor, as is often the case with "peel and stick" methods or wet adhesive systems.
6. No residue is left on the floor after StayTac® is removed.
7. Underfloor access is easy with StayTac®.
8. Off-gassing and resultant VOCs are non-detectable with StayTac®.
9. Installation productivity is improved compared to traditional or "peel and stick" methods since this system requires no additional floor preparation or extra materials to handle.
10. StayTac® is more cost effective because there are no adhesive or other chemicals to apply and no waiting time for these to dry.
11. StayTac® is environmentally superior, and is manufactured with a bio-based component as a substitute for petroleum based derivatives.

For lower cost, less preparation, faster installation, less waste, and the lowest impact on indoor air quality, StayTac® is the best choice when compared with any other modular carpet installation system on the market.





## *Etruscan™ - 909*



CUSTOM COLORATION

Highly decorative and refined, Etruscan™ is not your ordinary carpet tile. Just a single geometric element can be combined, duplicated, and interlaced to create intricate combinations that suggest unity, logic, and order.



# Etruscan™ - 909



01 - Aqua



02 - Charcoal



03 - Chocolate



04 - Navy



05 - Olive

## Tile Size

- 1m x 1m

## Back Options

- StayTac® (standard)  
No Adhesives Required

## Constructions

- Main Street

## COORDINATES:

# Prism™ - 907



01 - Aqua



02 - Seafoam



03 - Gray



04 - Charcoal



05 - Tan



06 - Chocolate



07 - Light Blue



08 - Navy



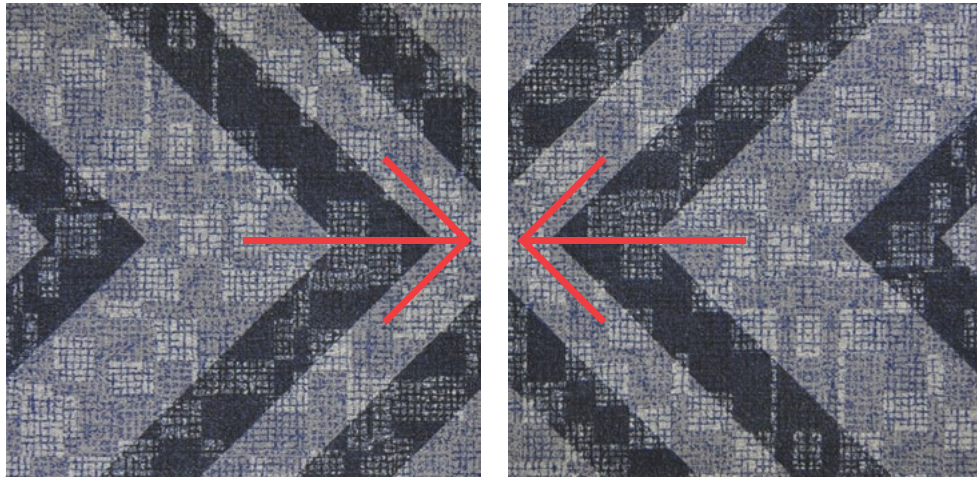
09 - Light Olive



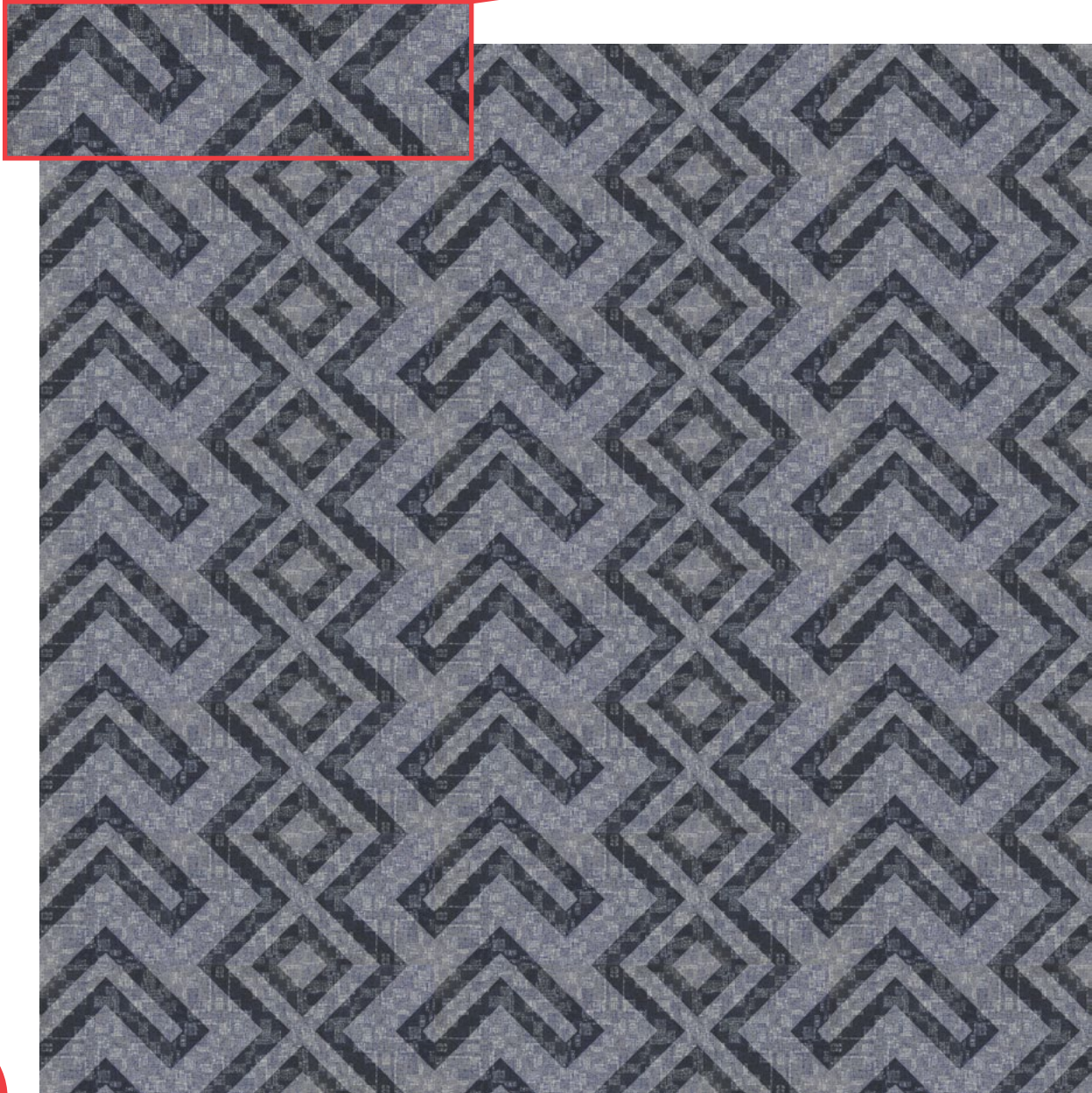
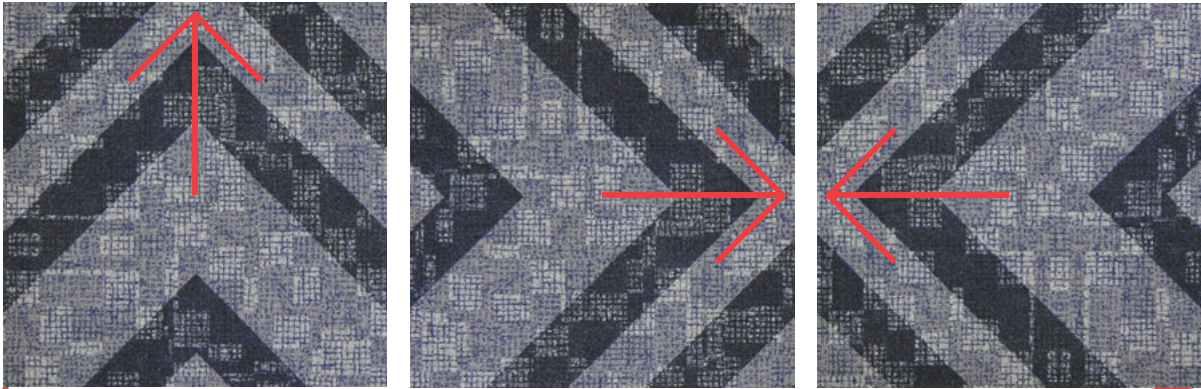
10 - Dark Olive



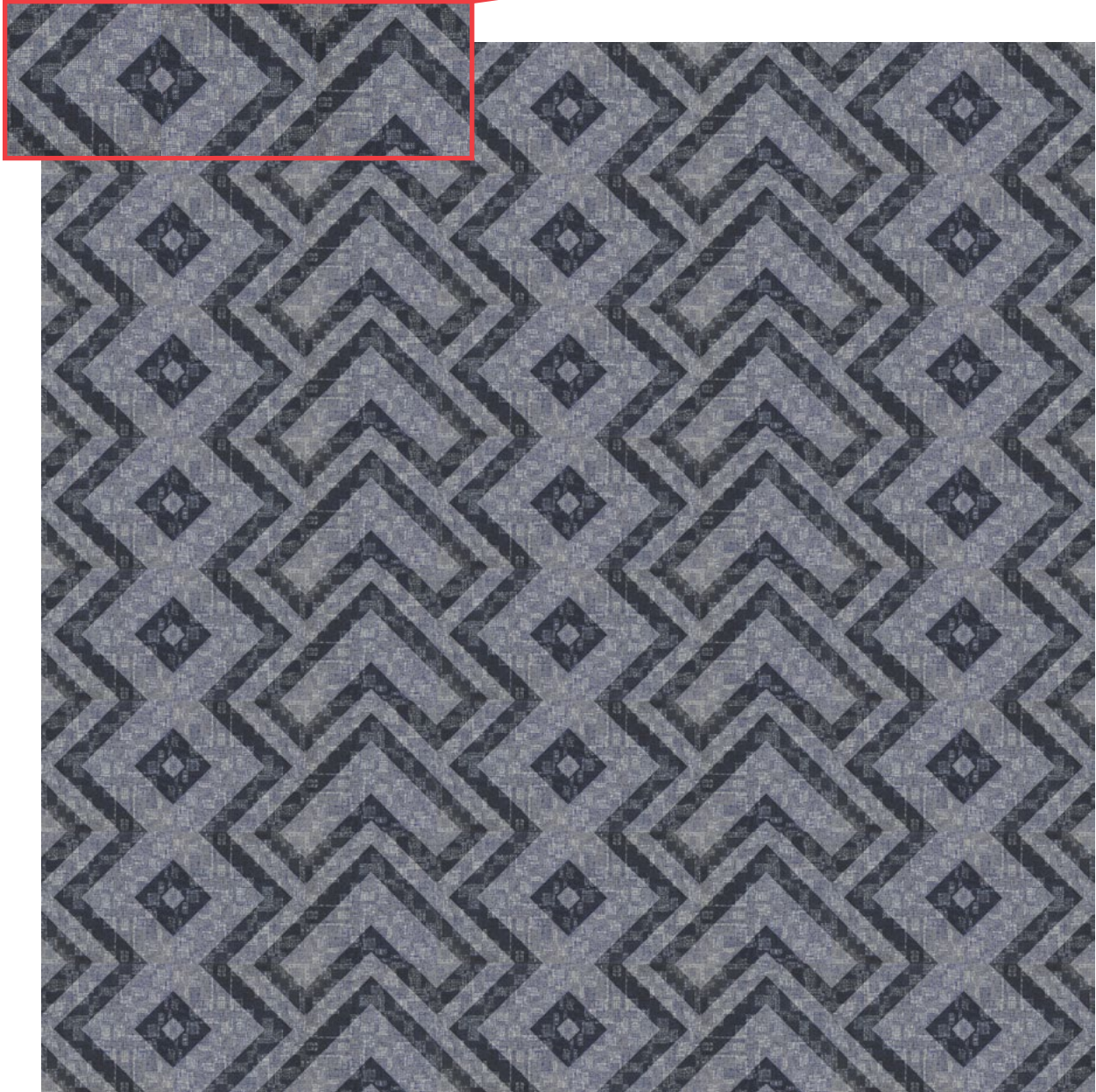
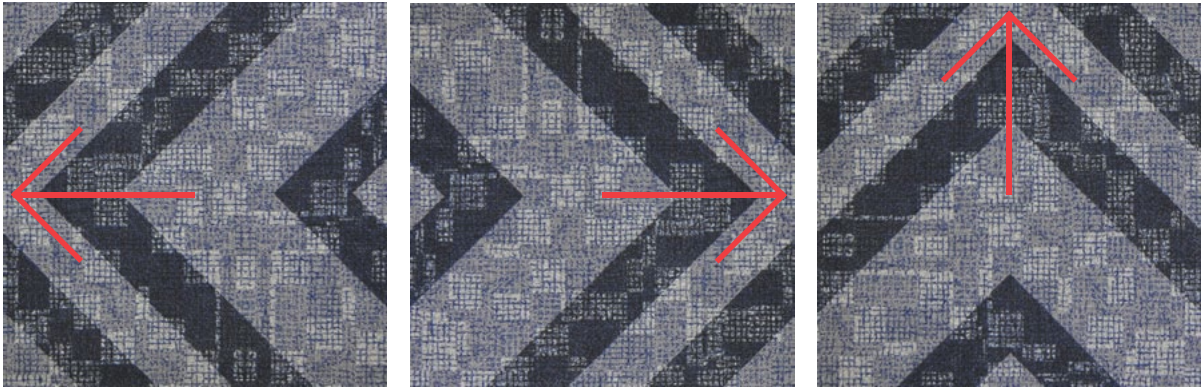




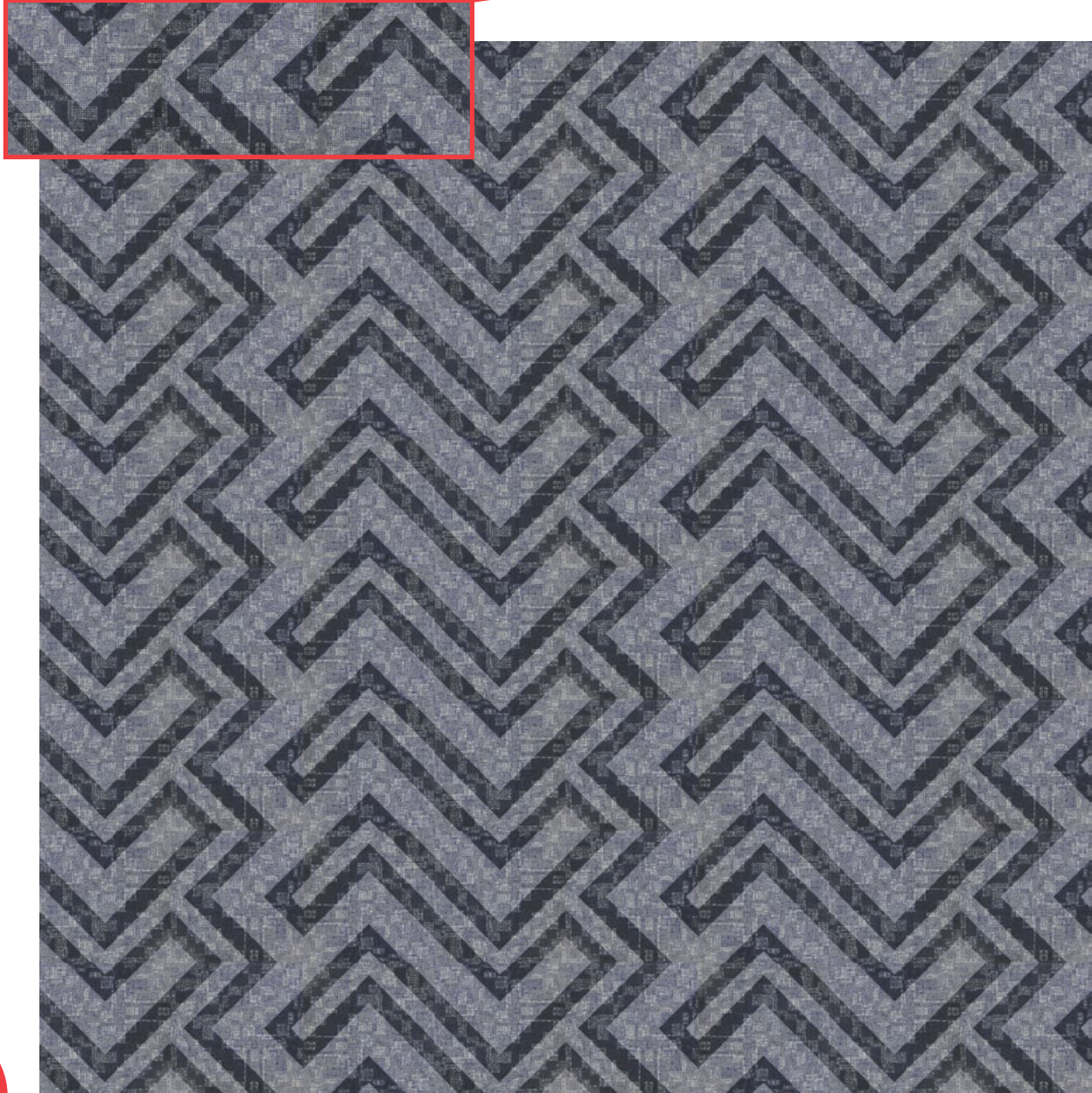
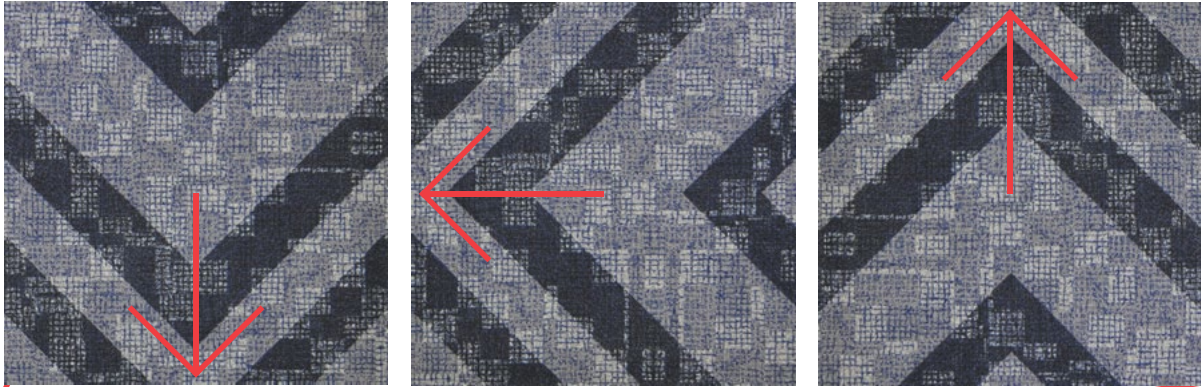




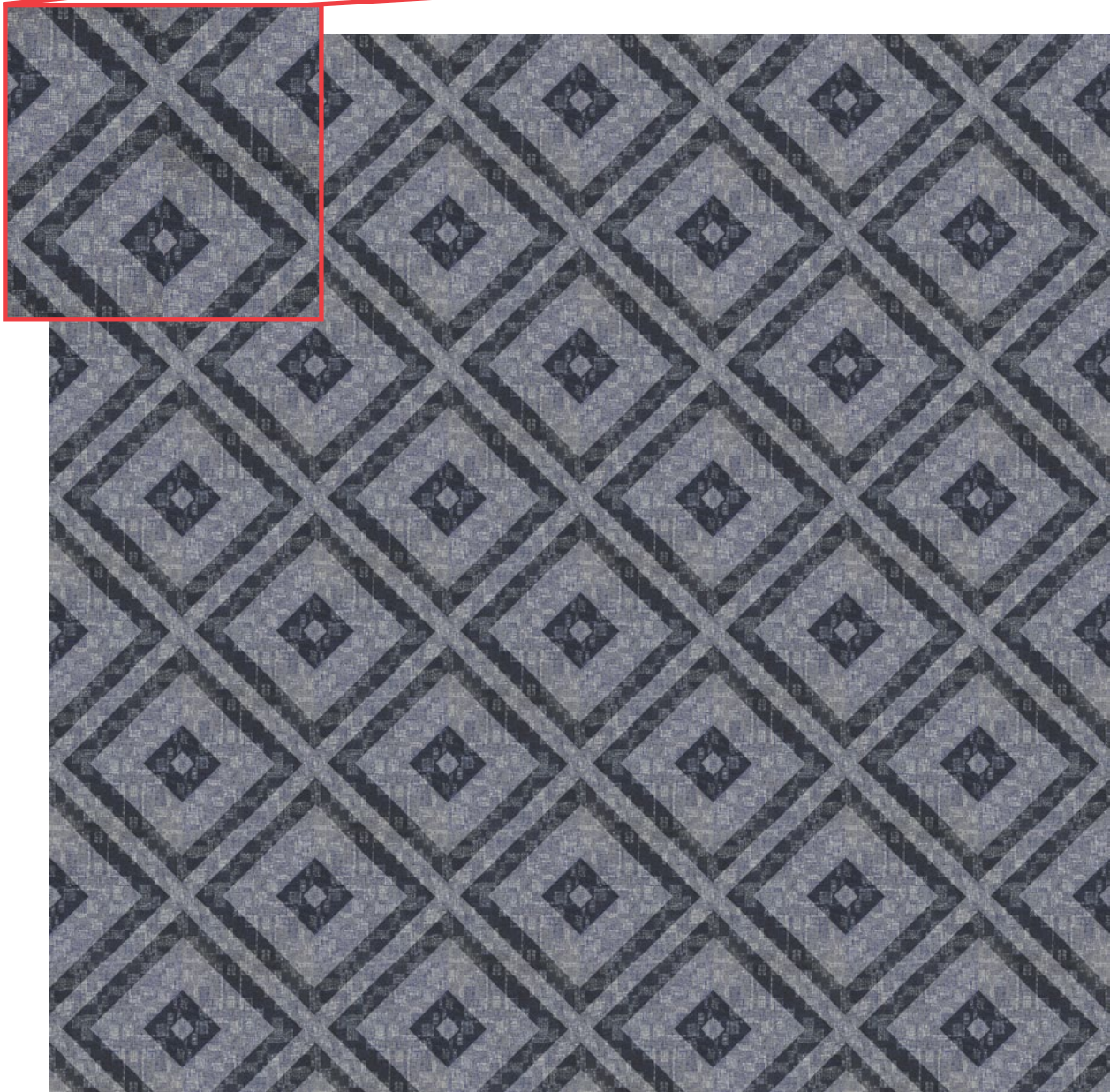
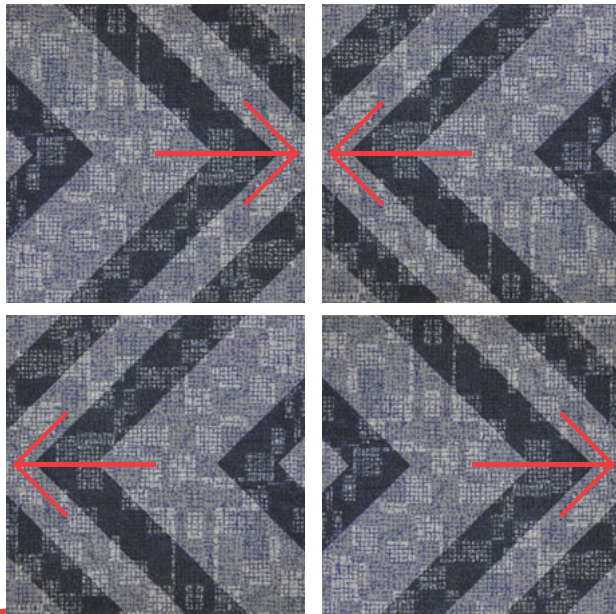




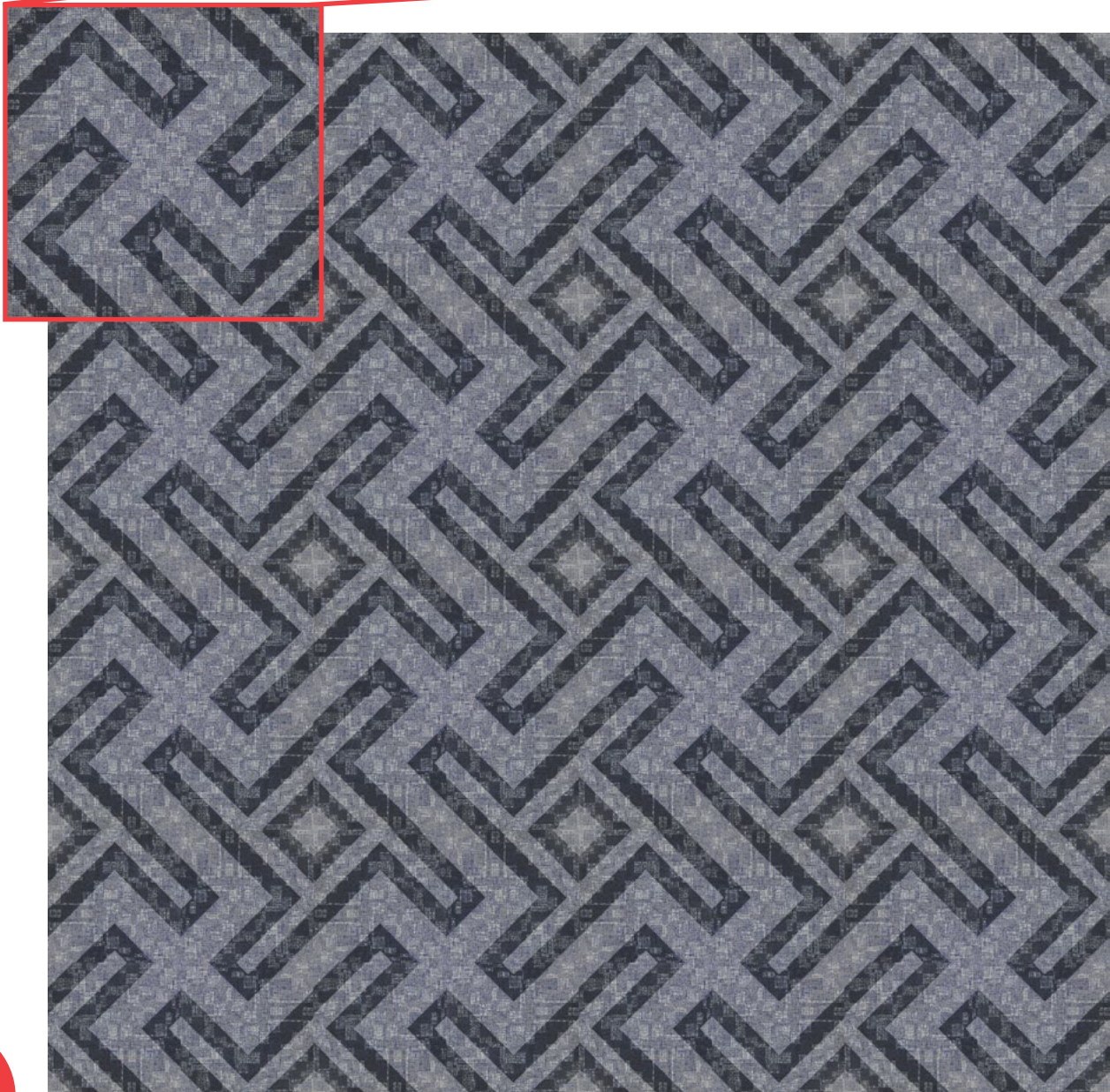
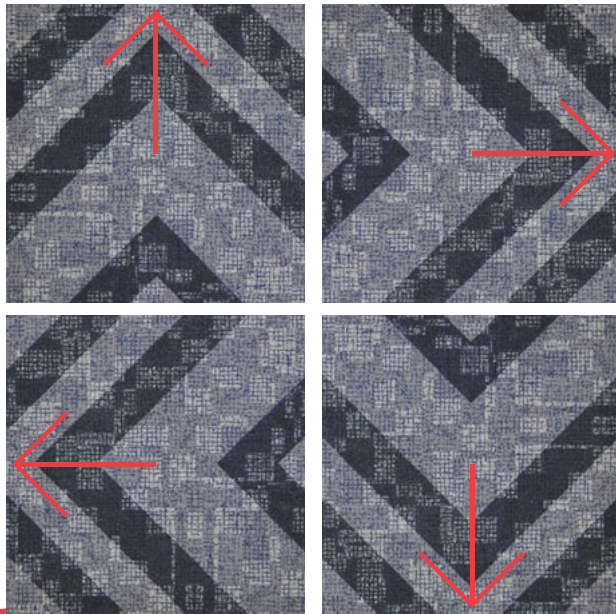




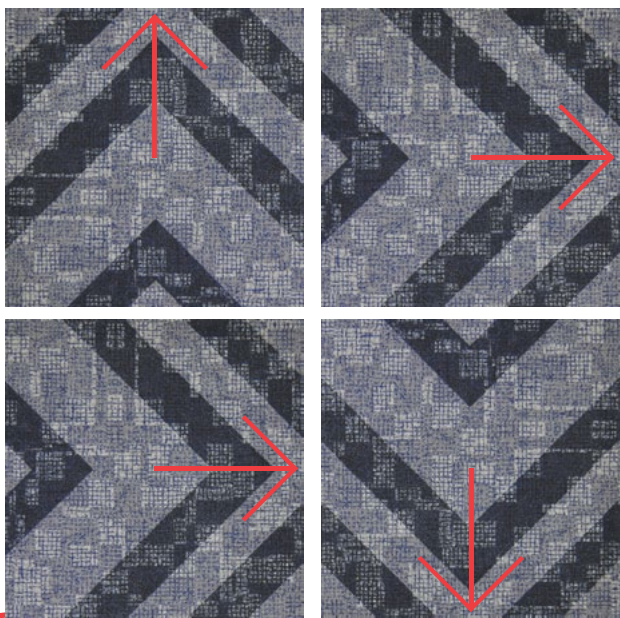




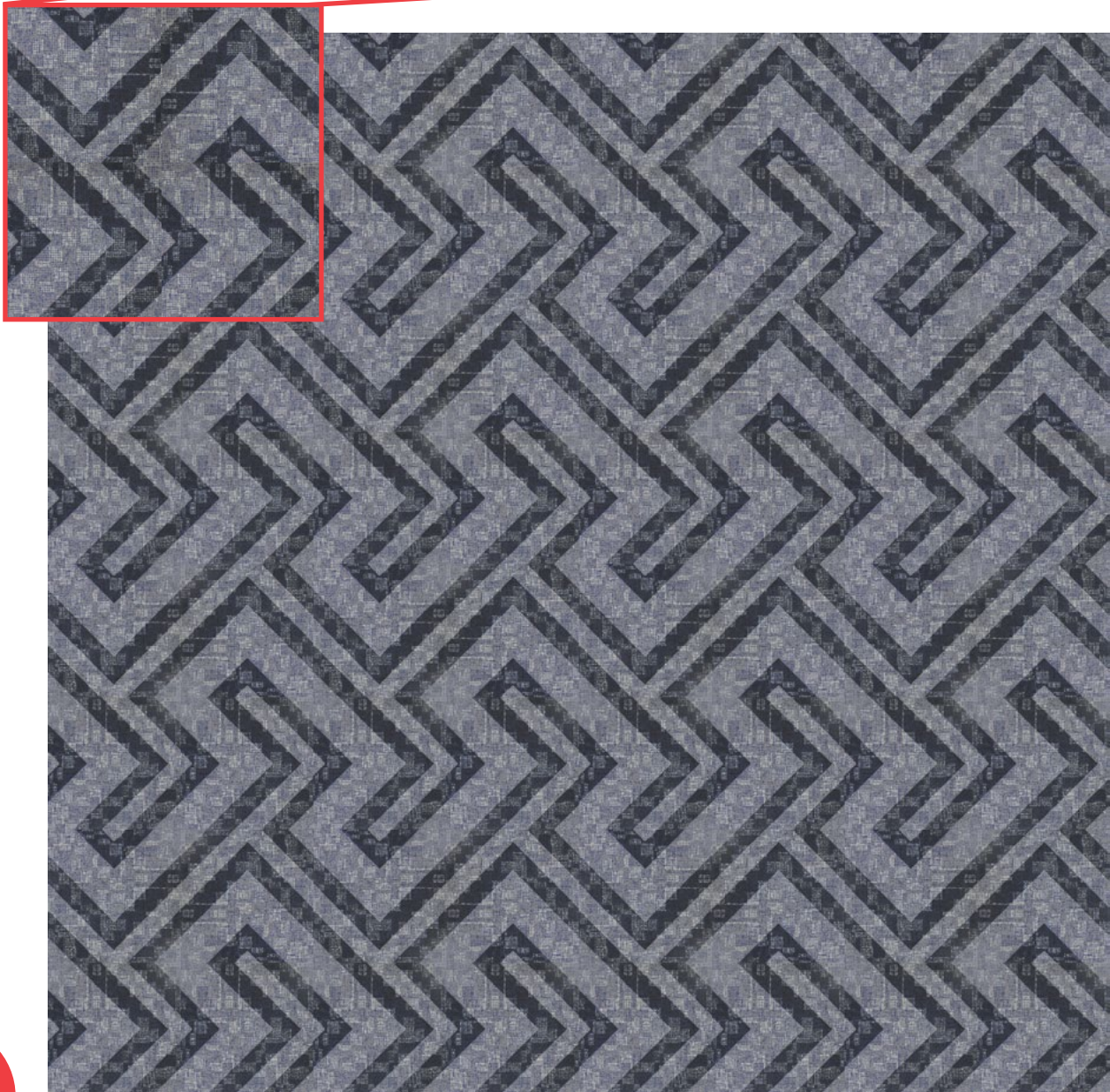
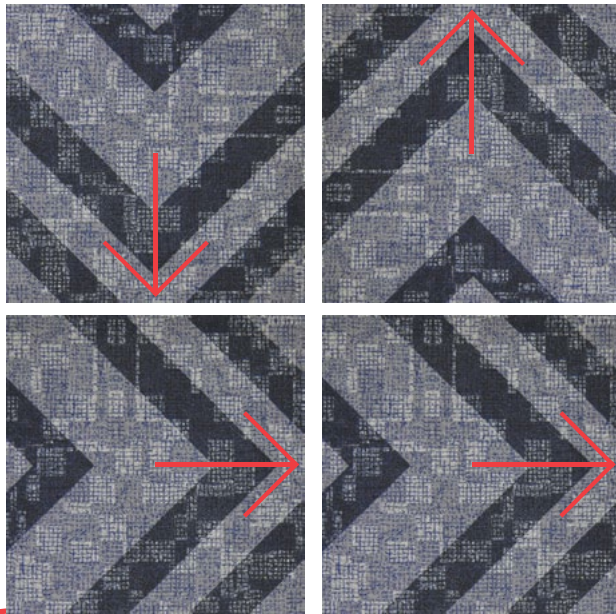




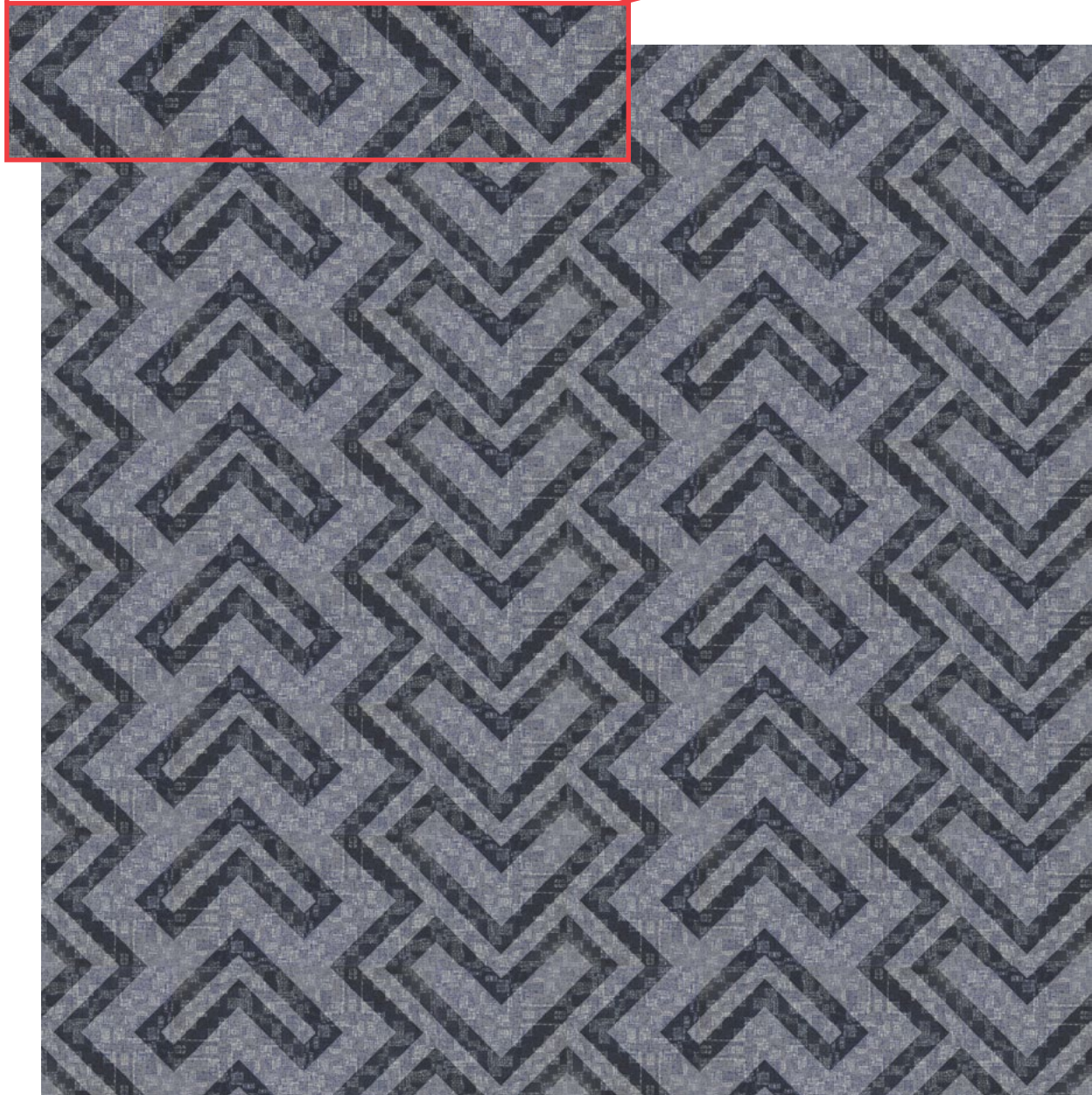
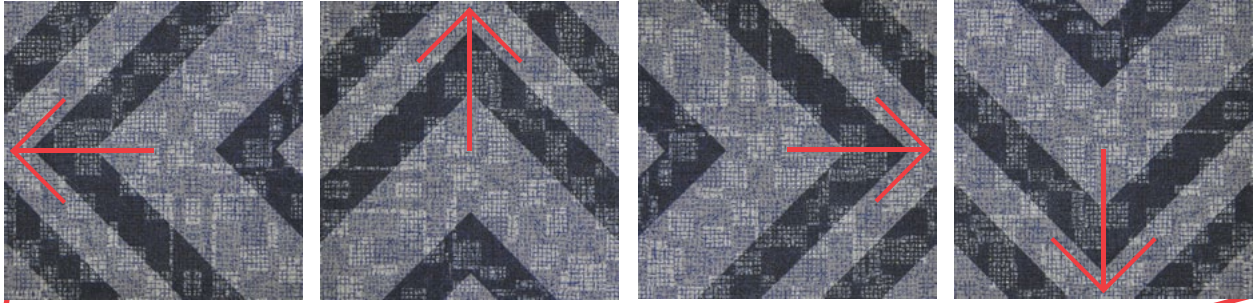




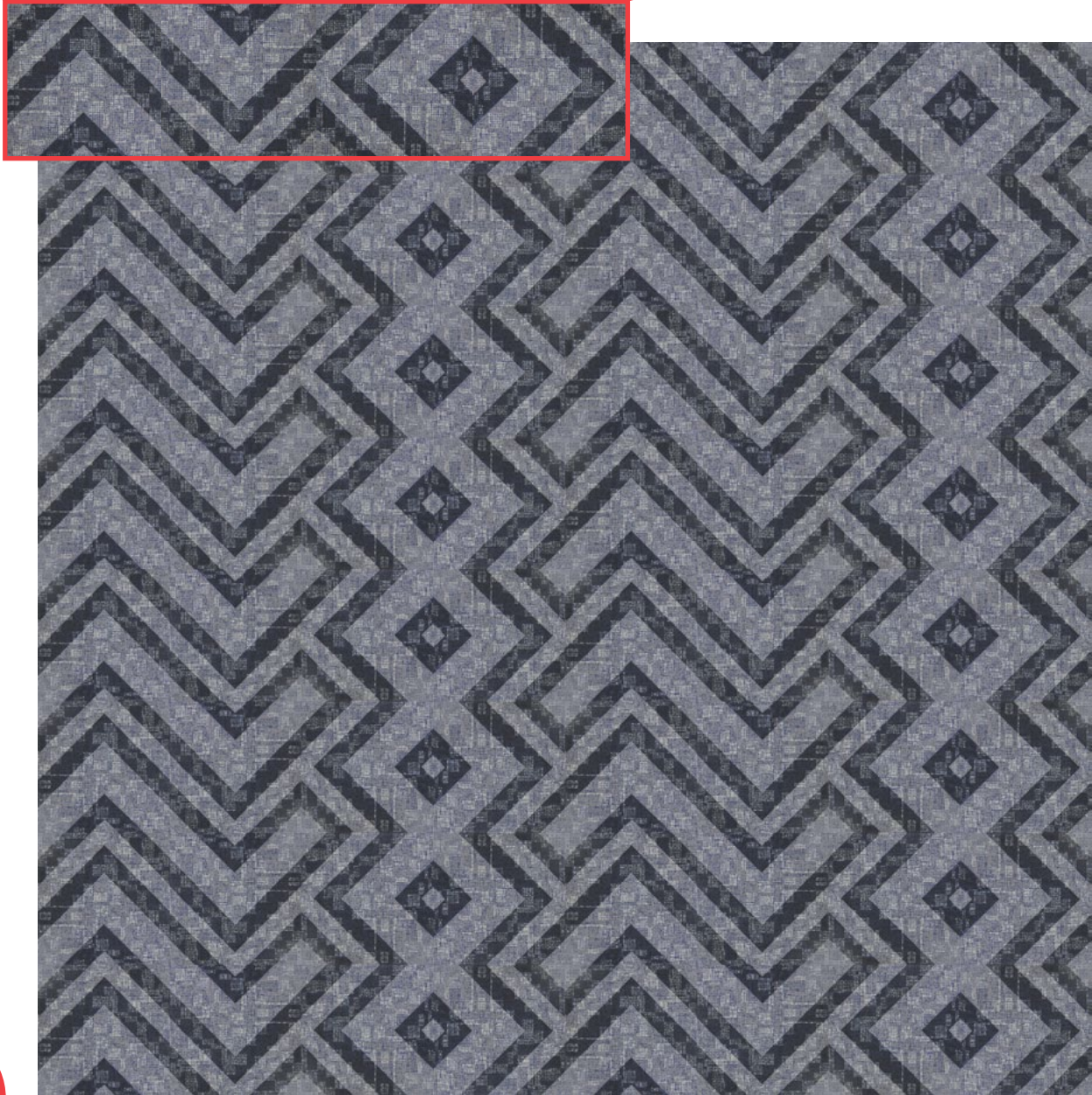
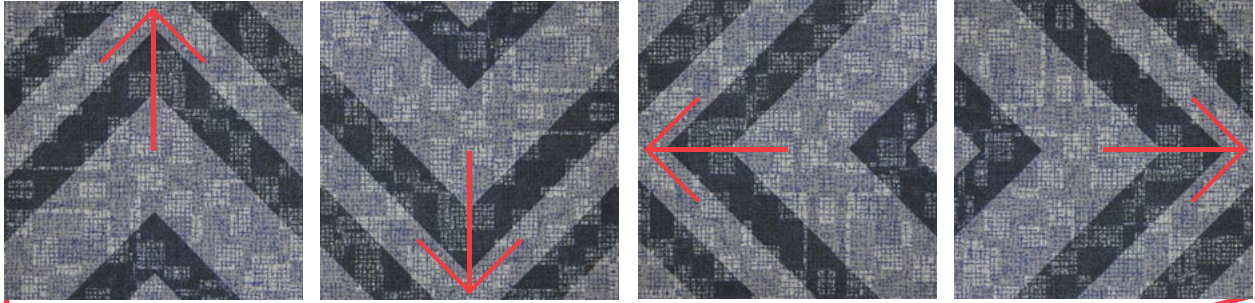




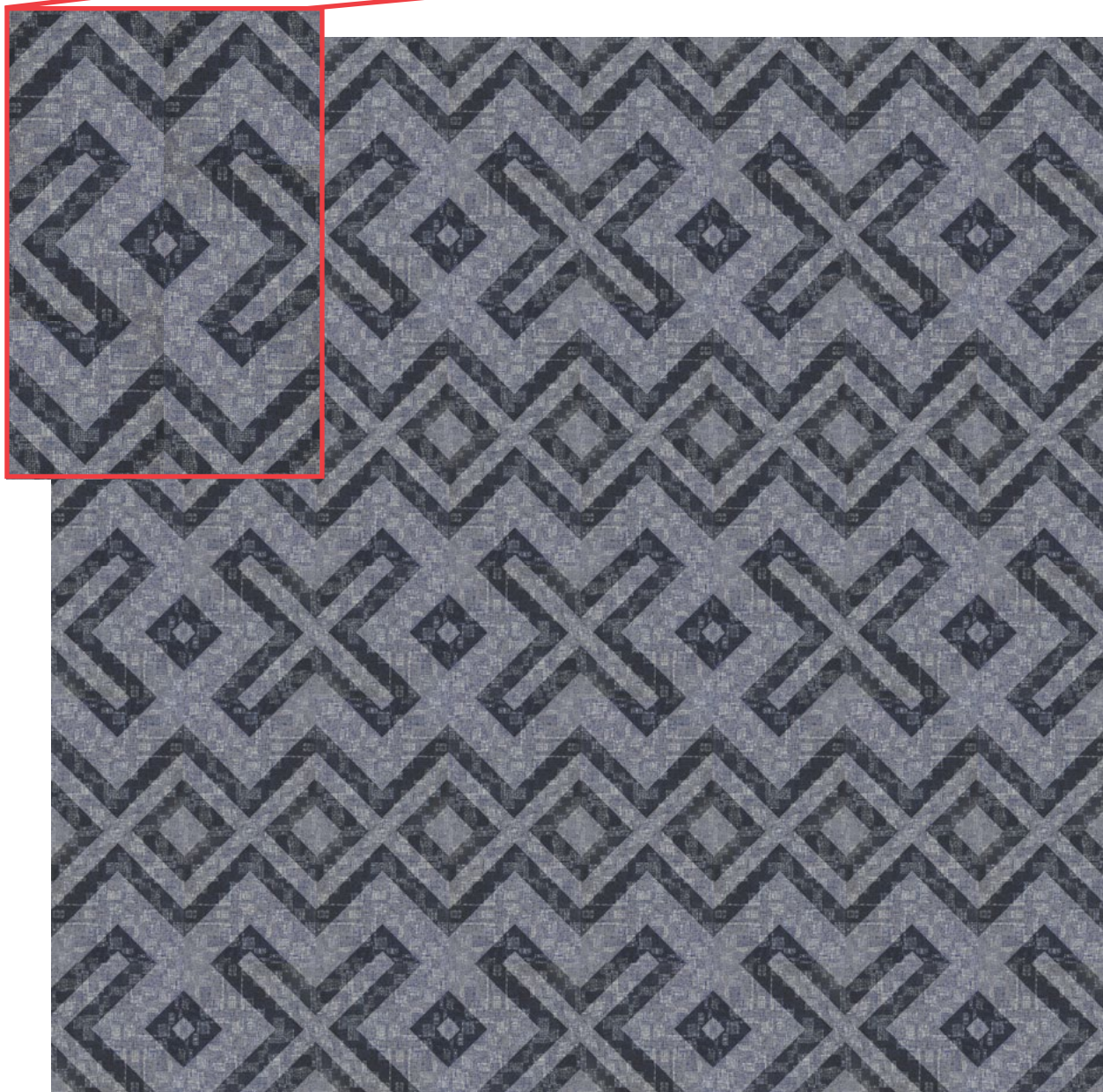
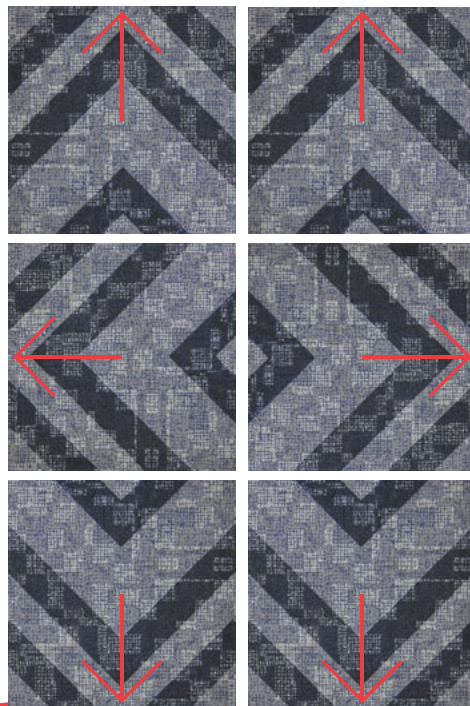




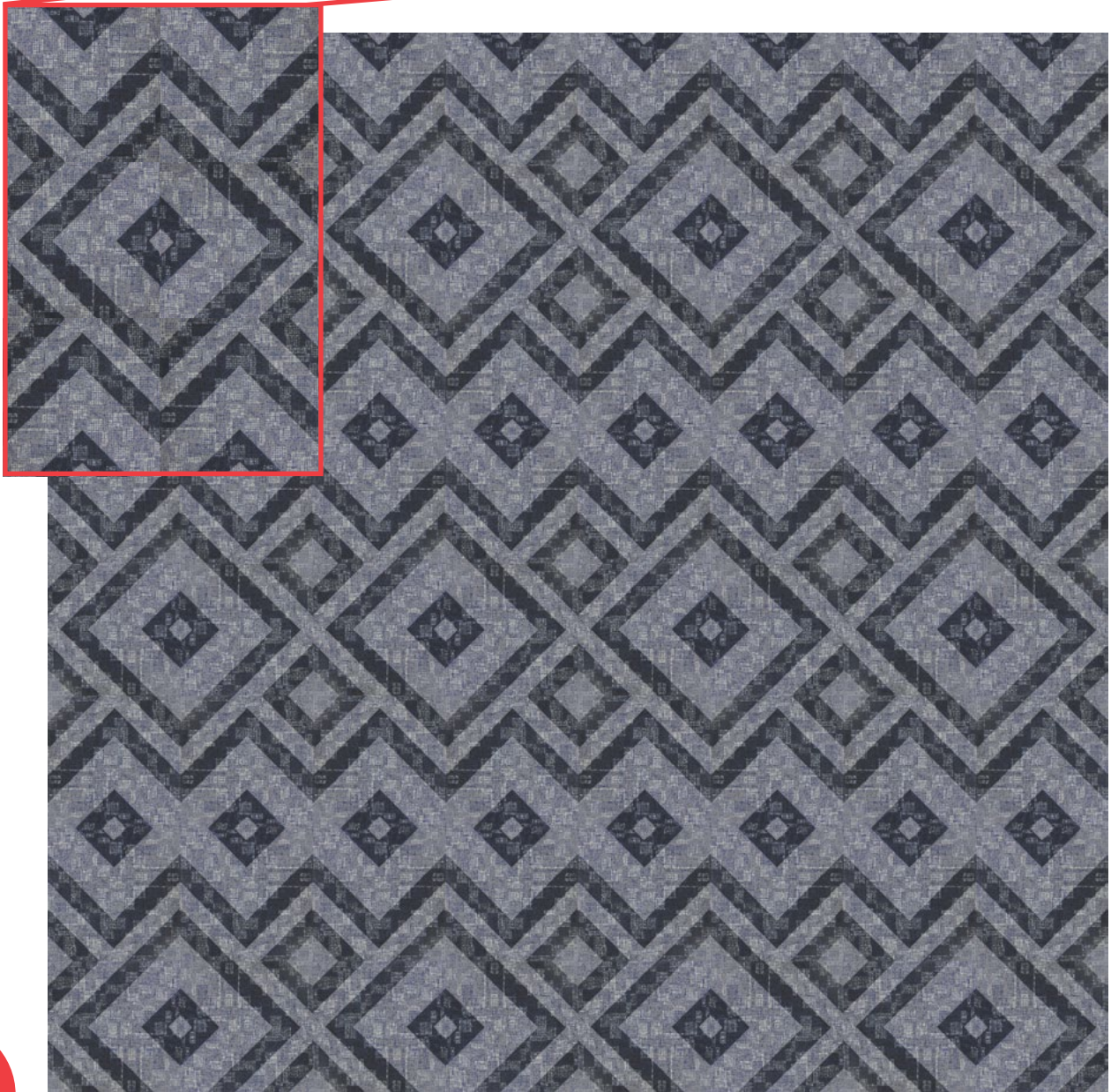
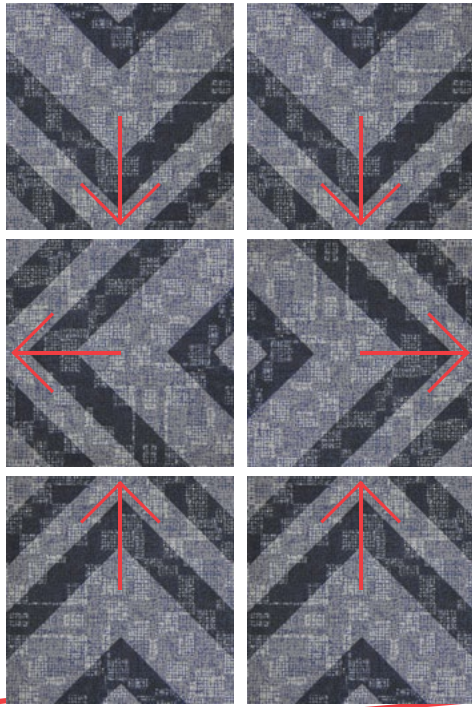




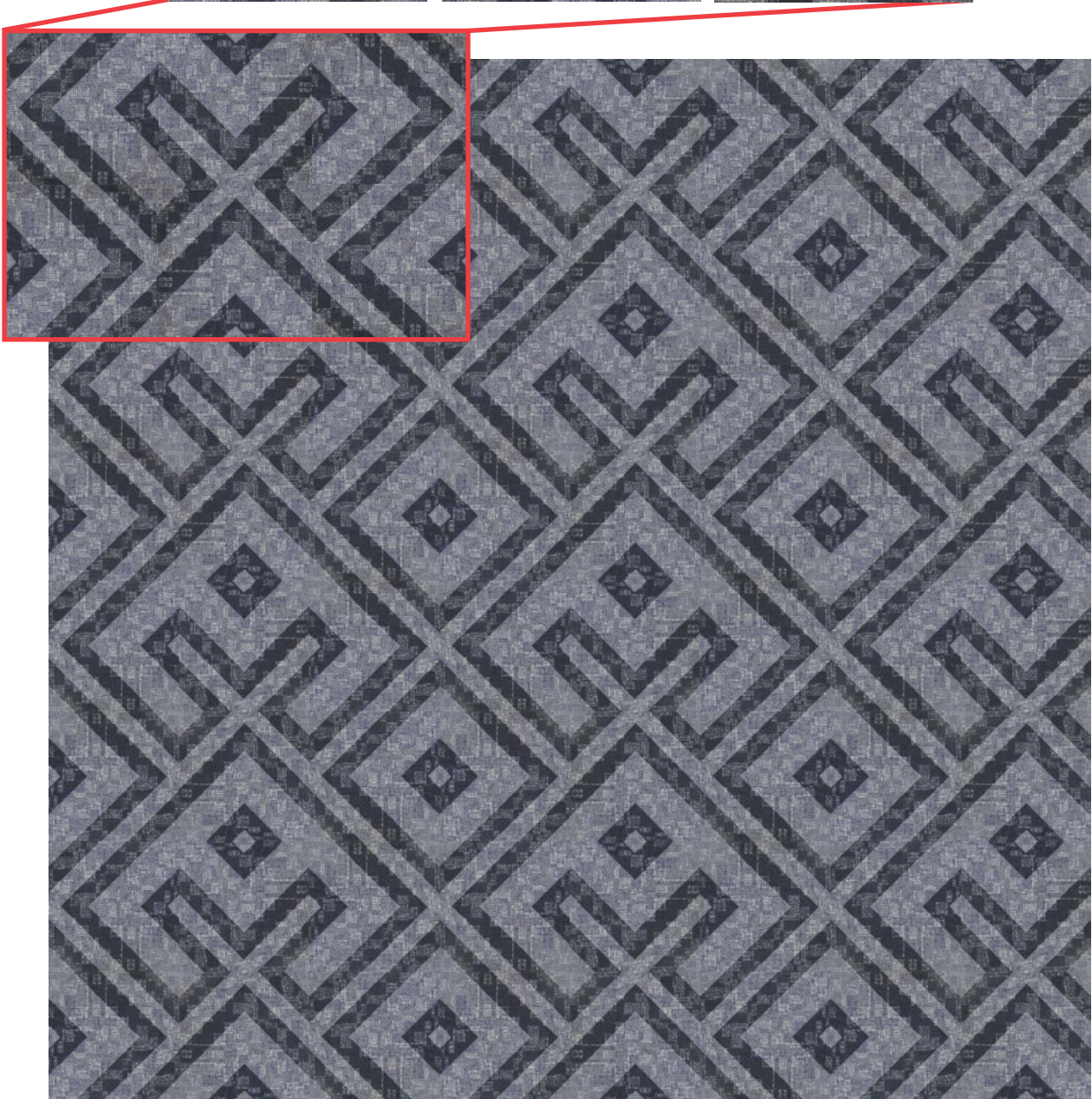
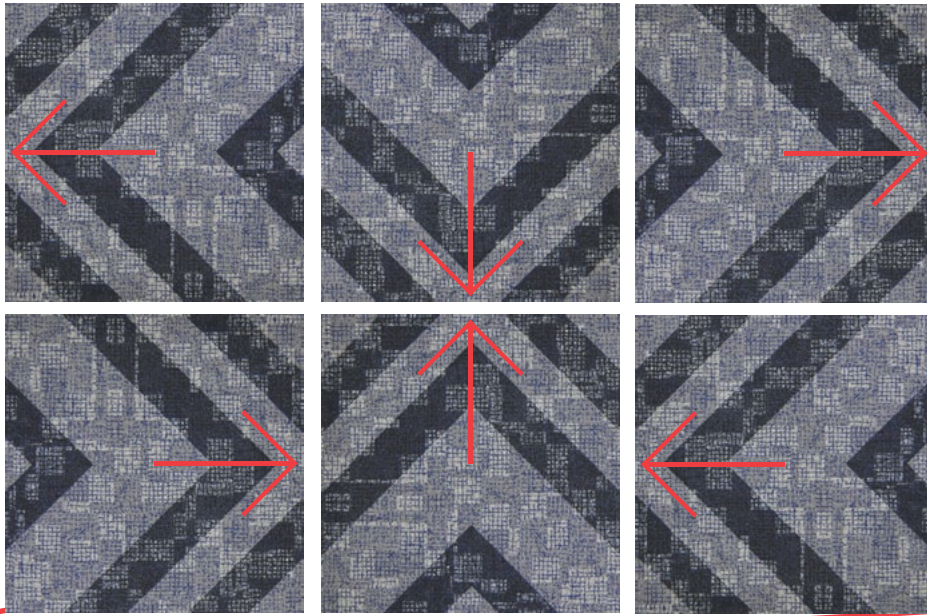




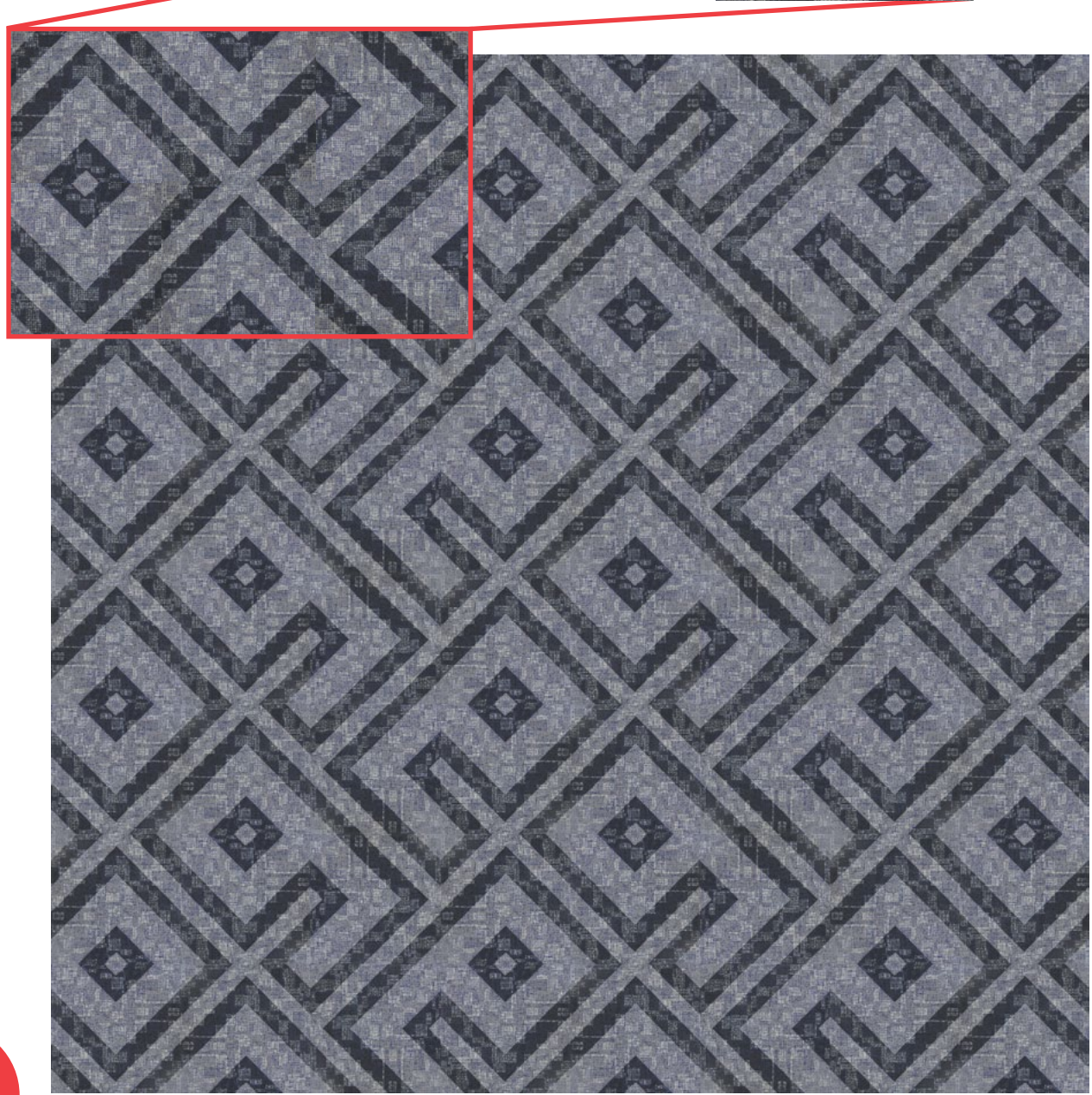
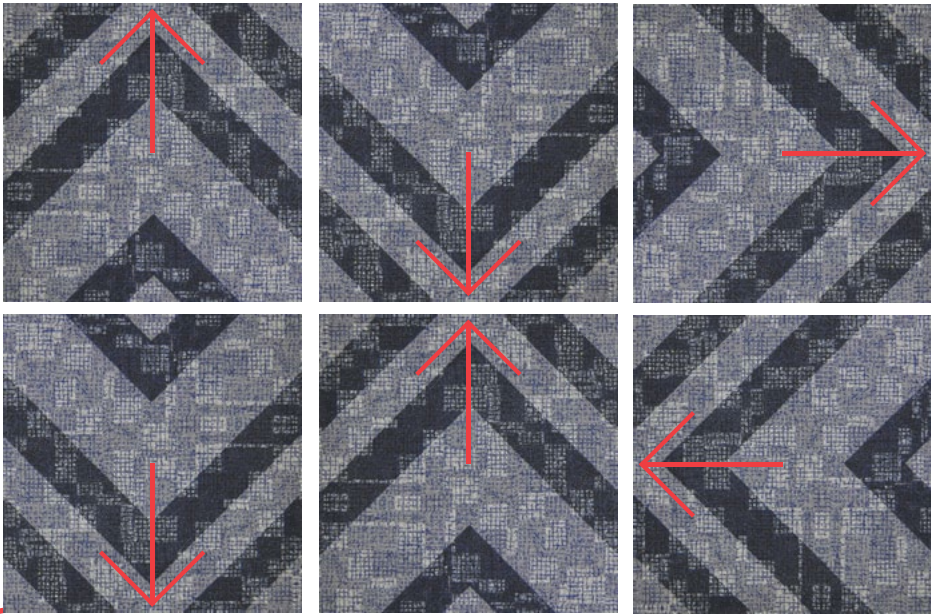




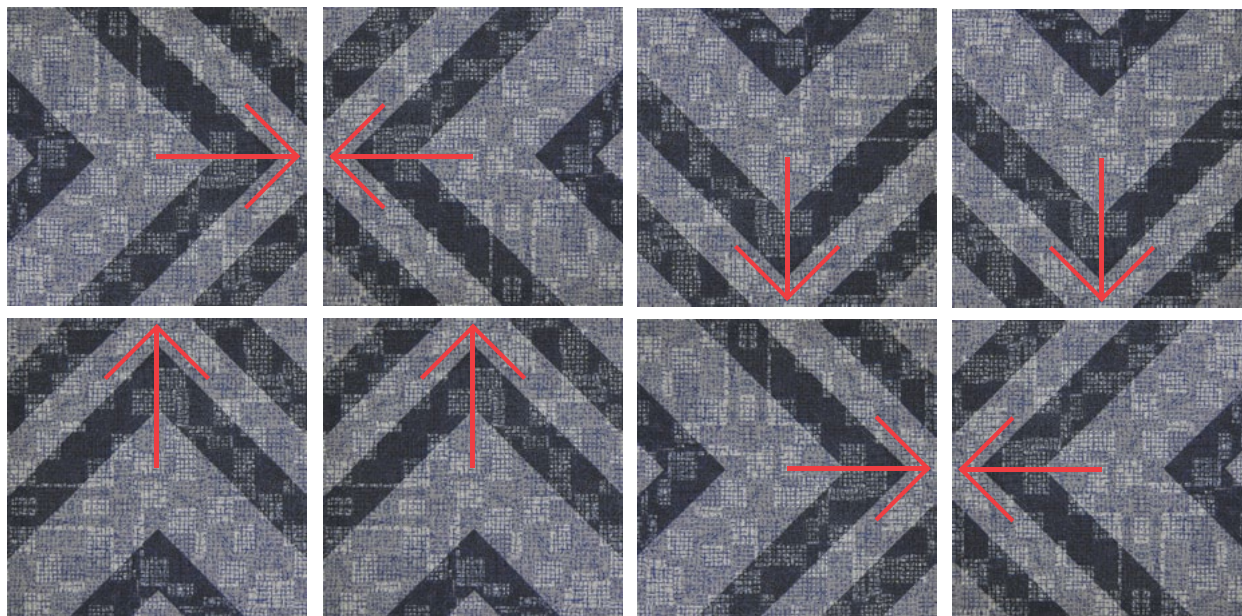




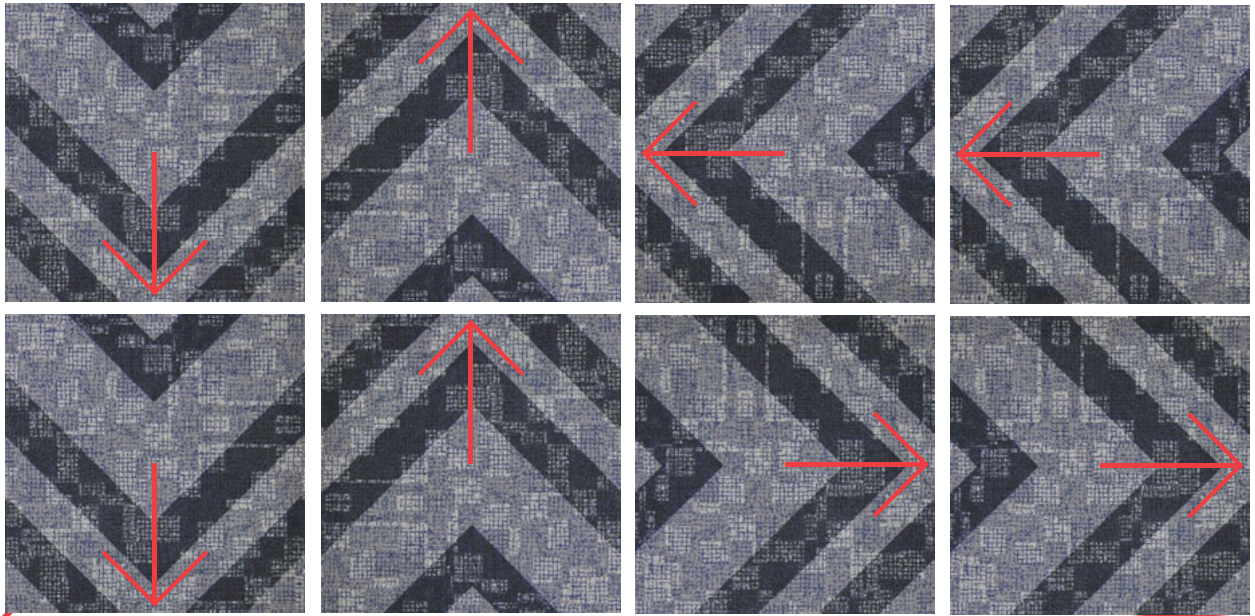




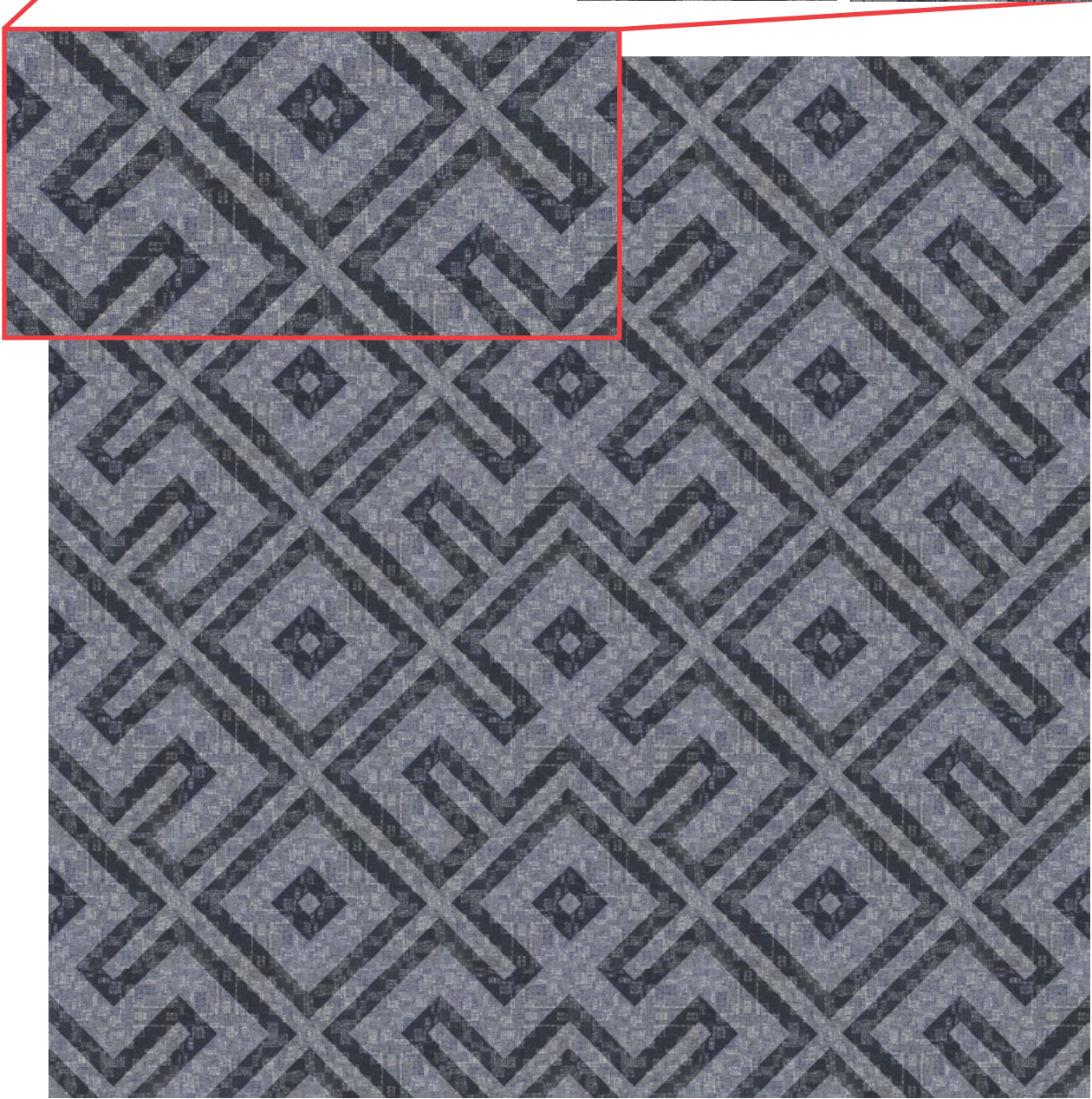
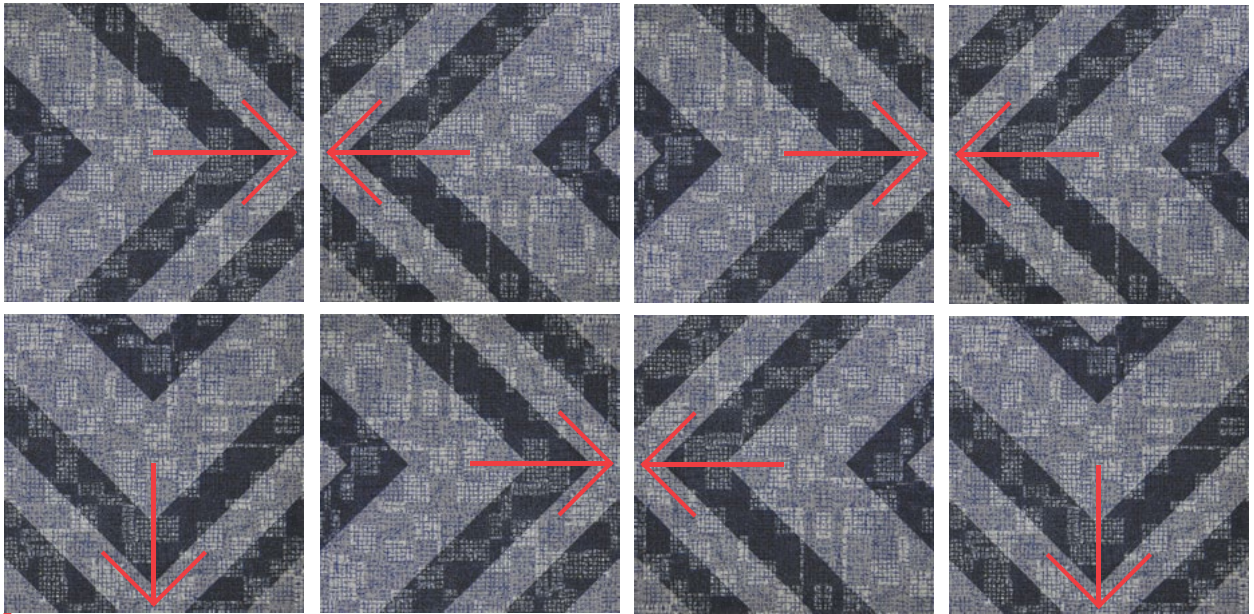




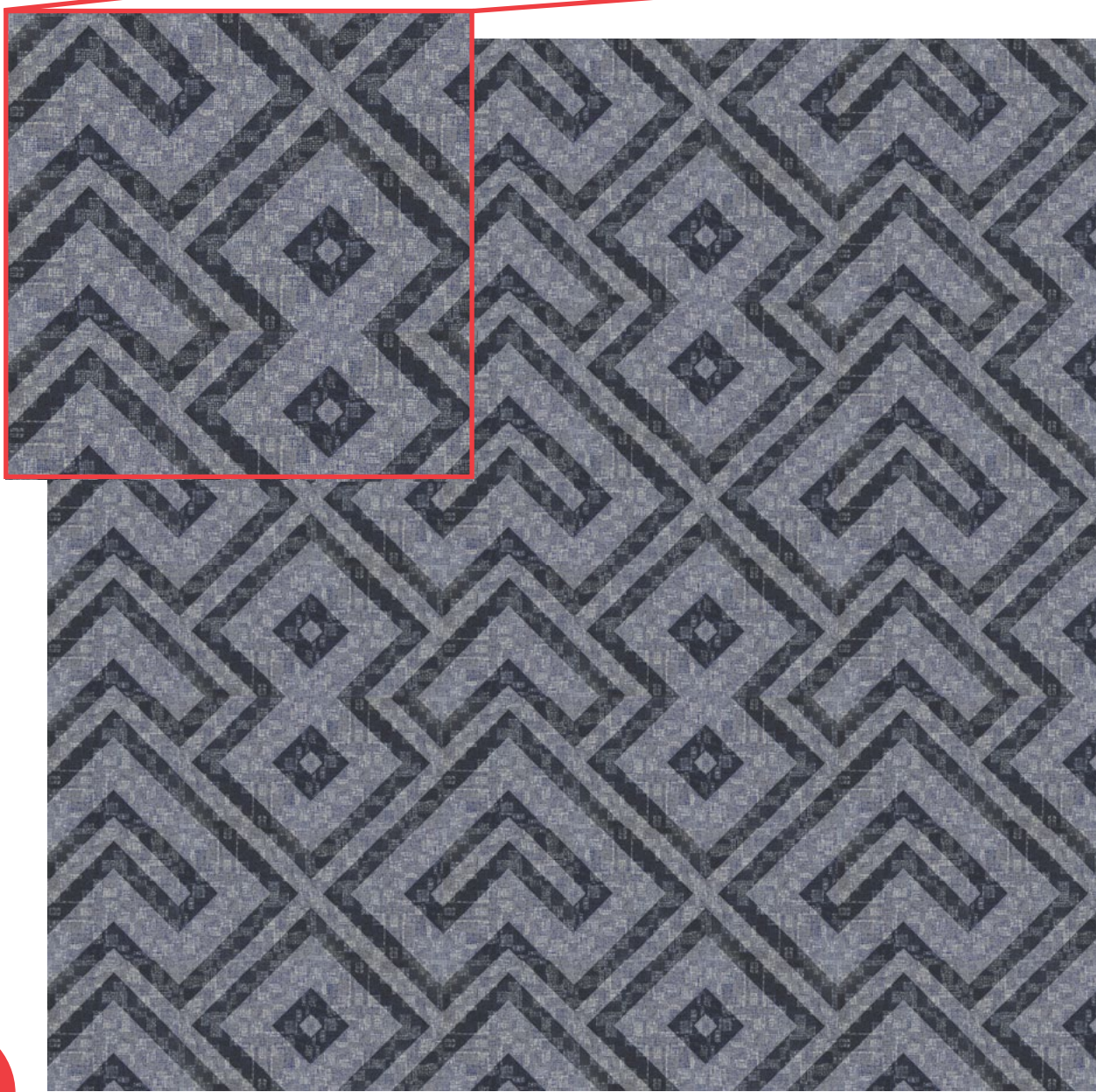
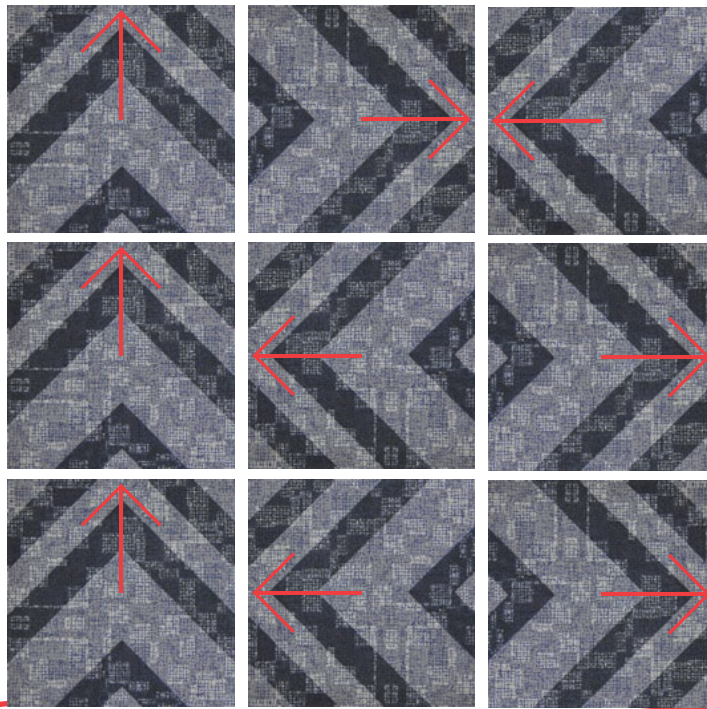




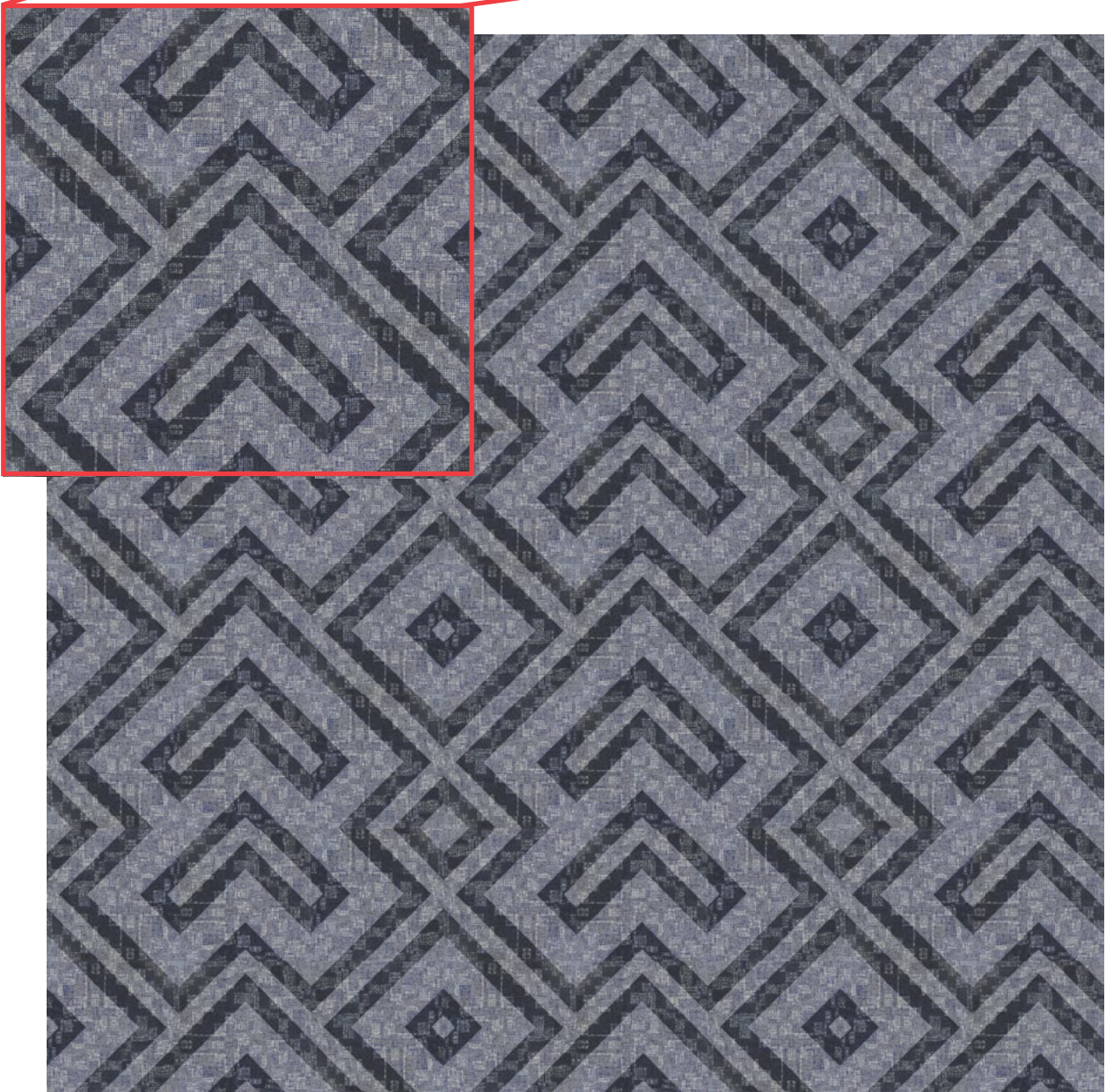
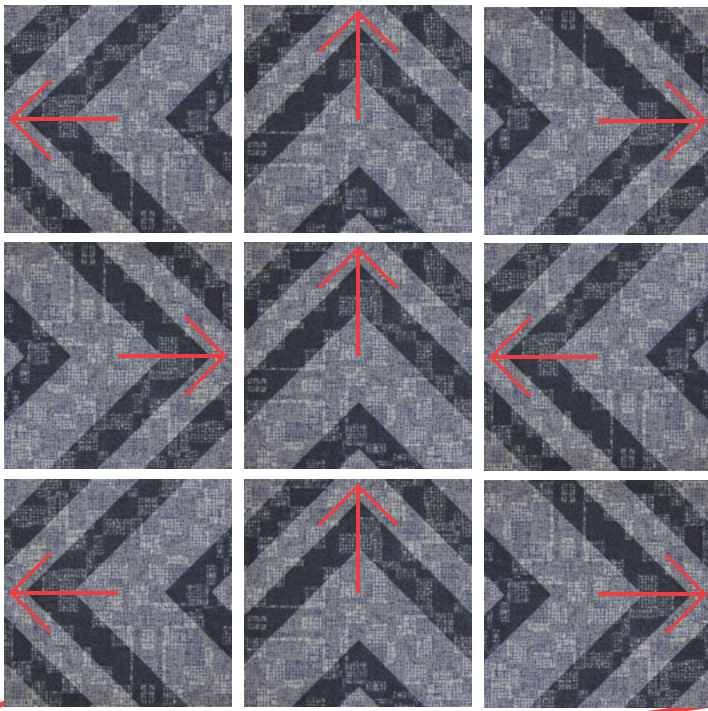




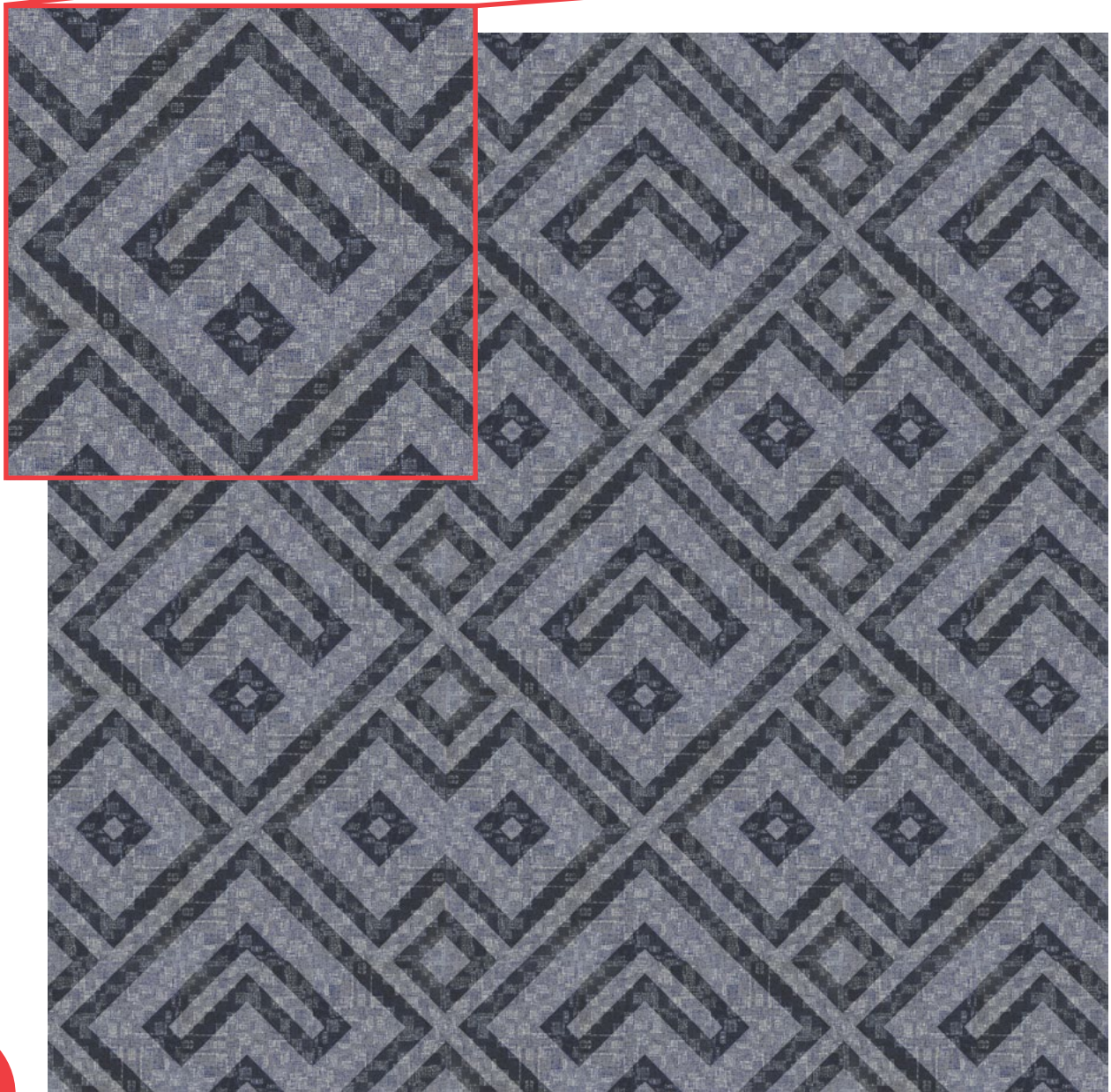
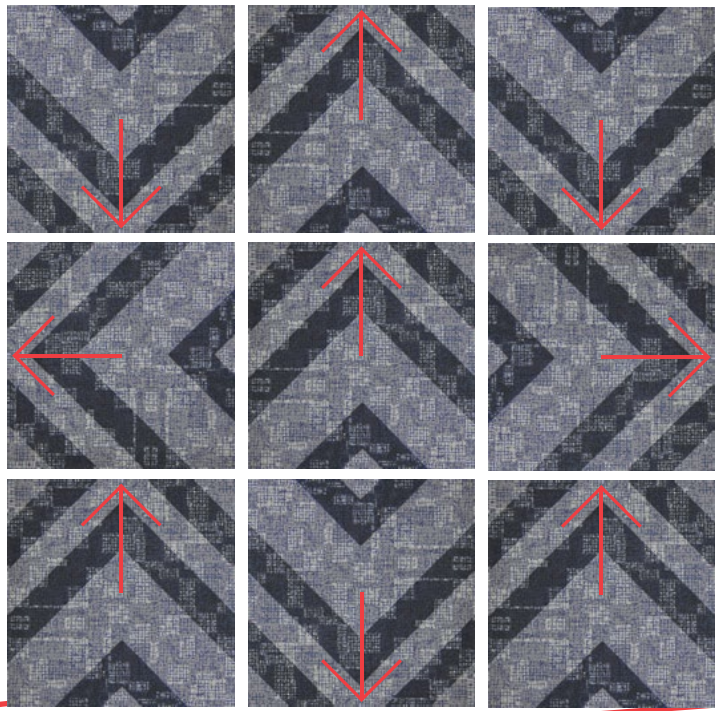




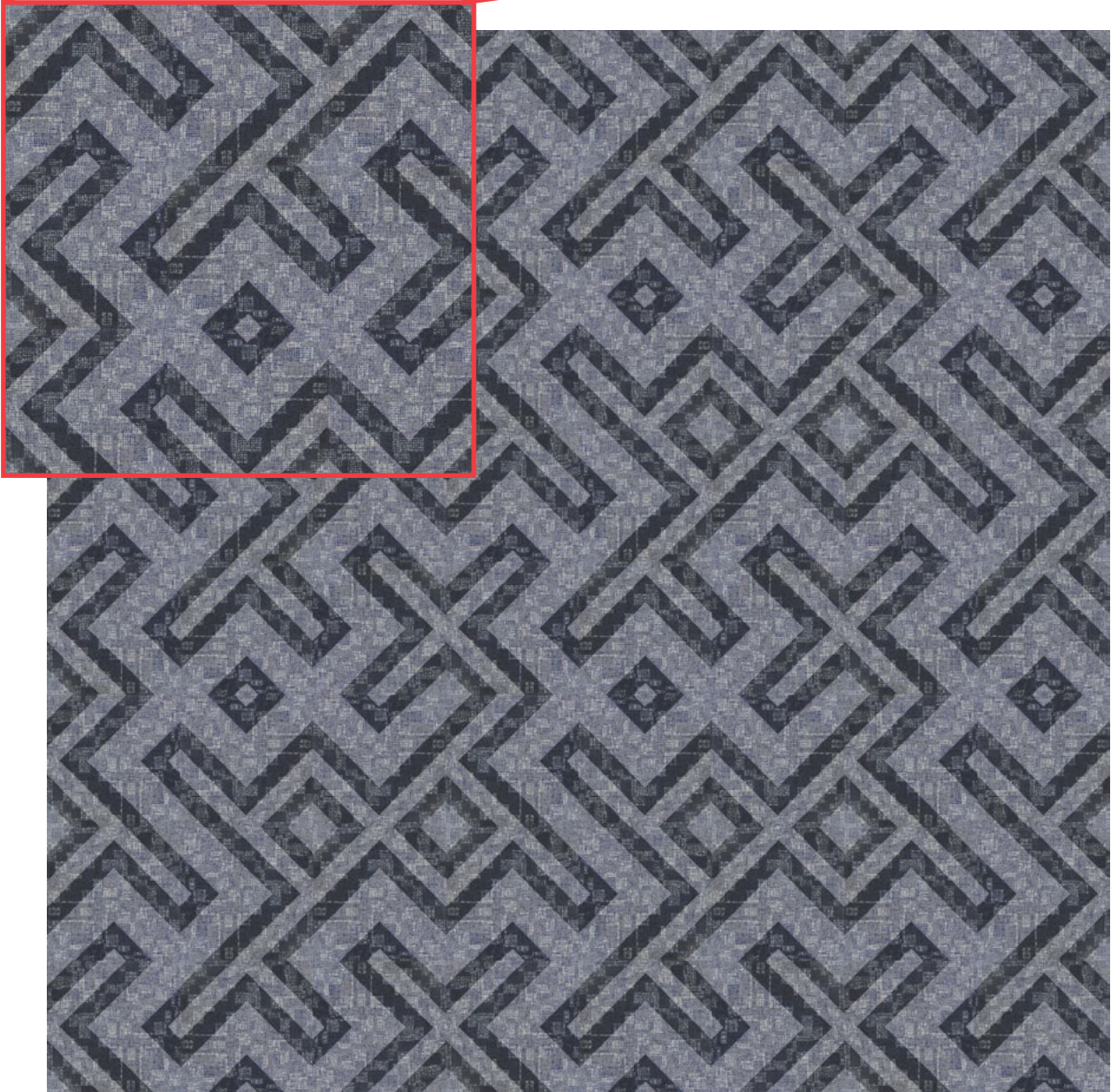
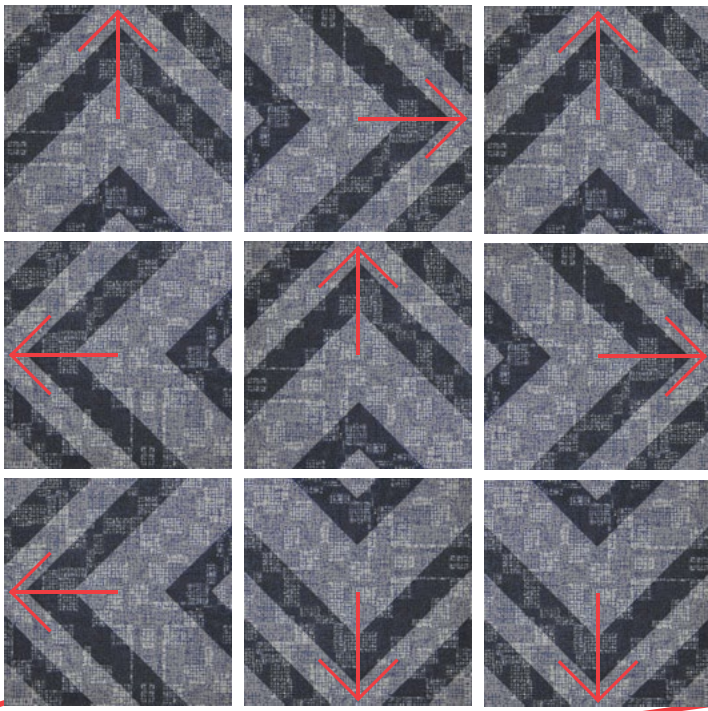




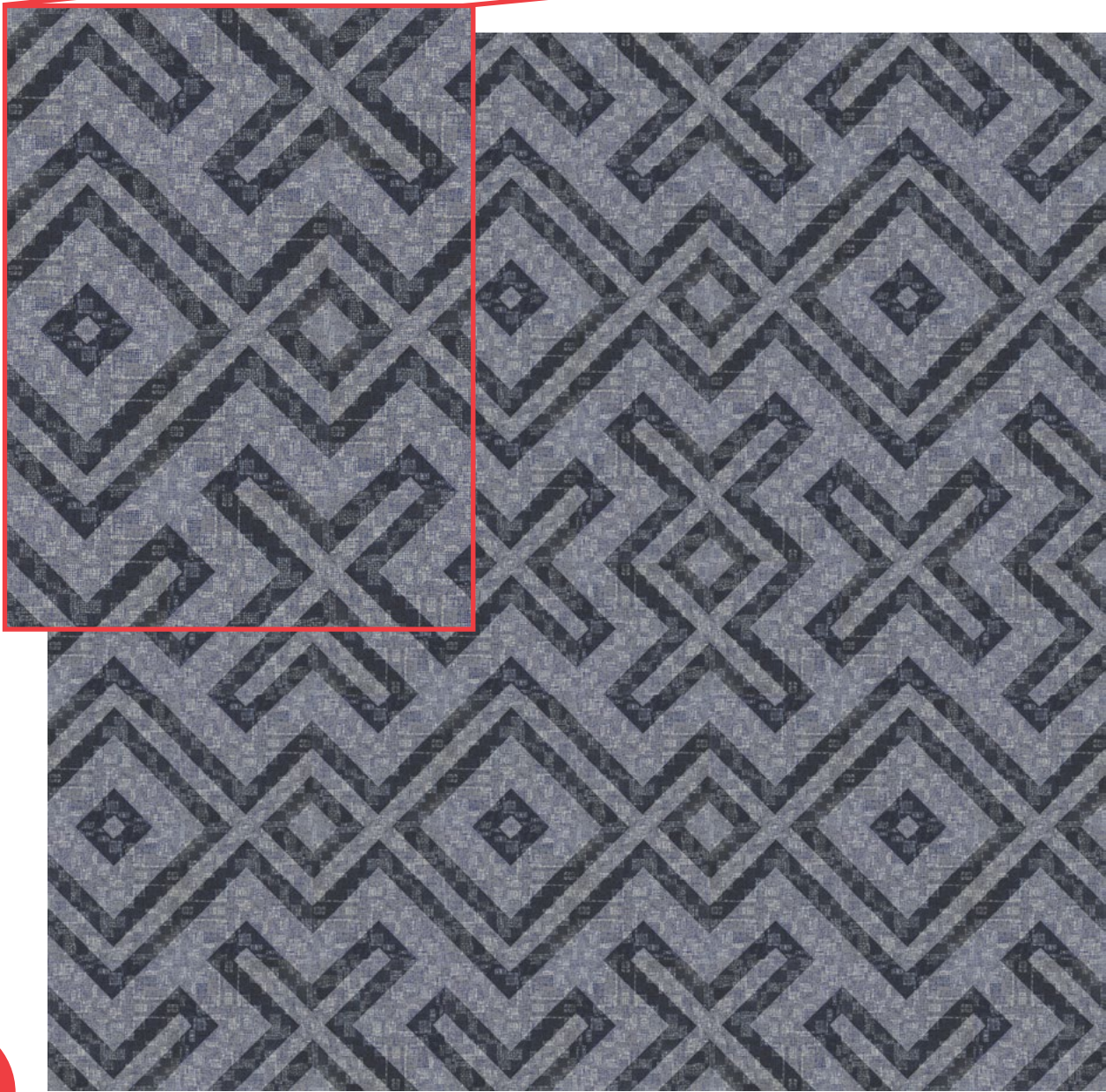
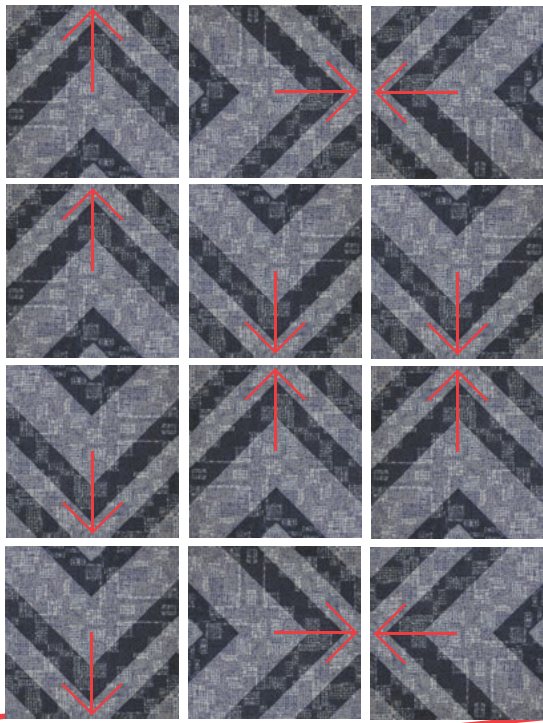




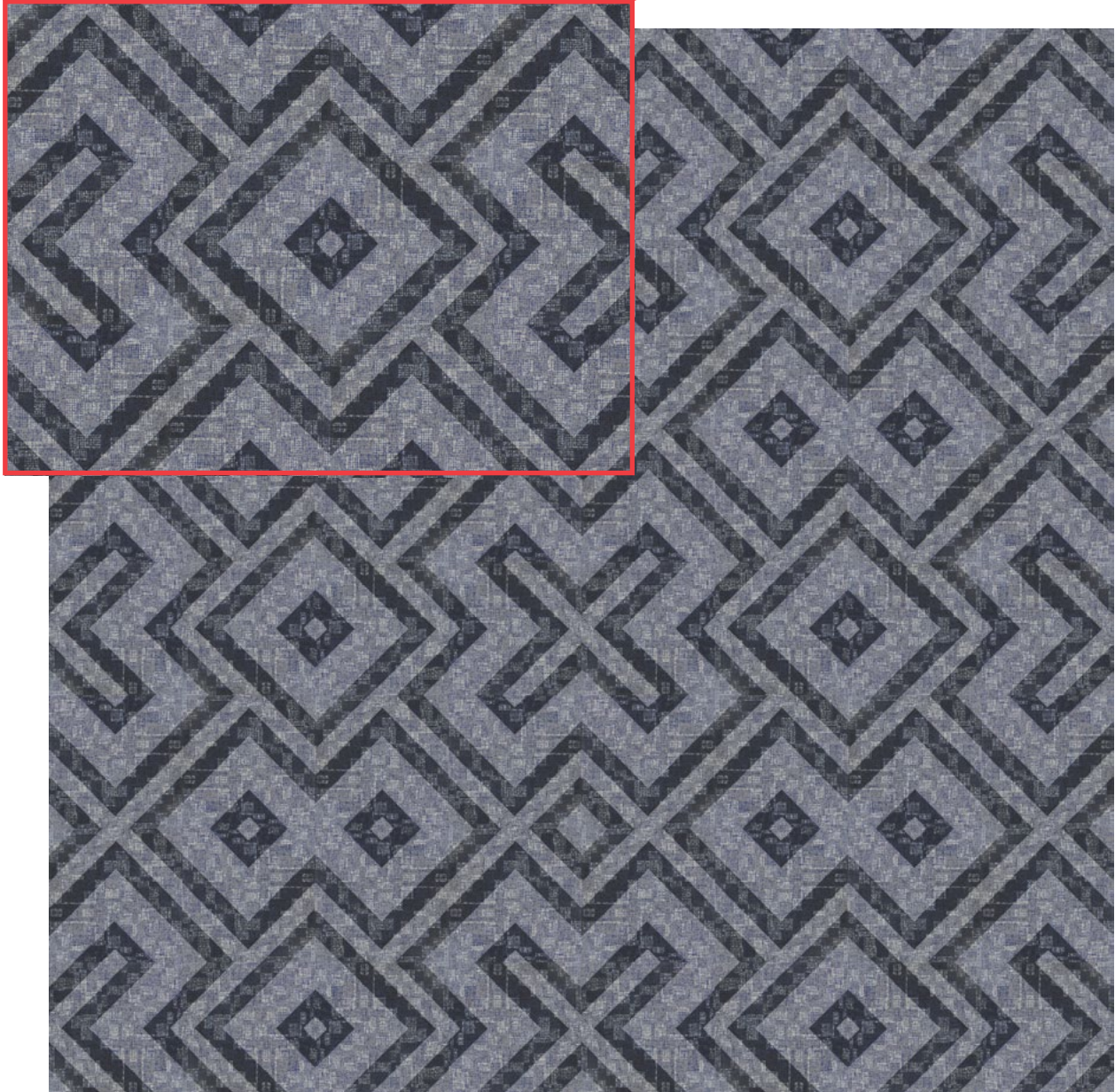
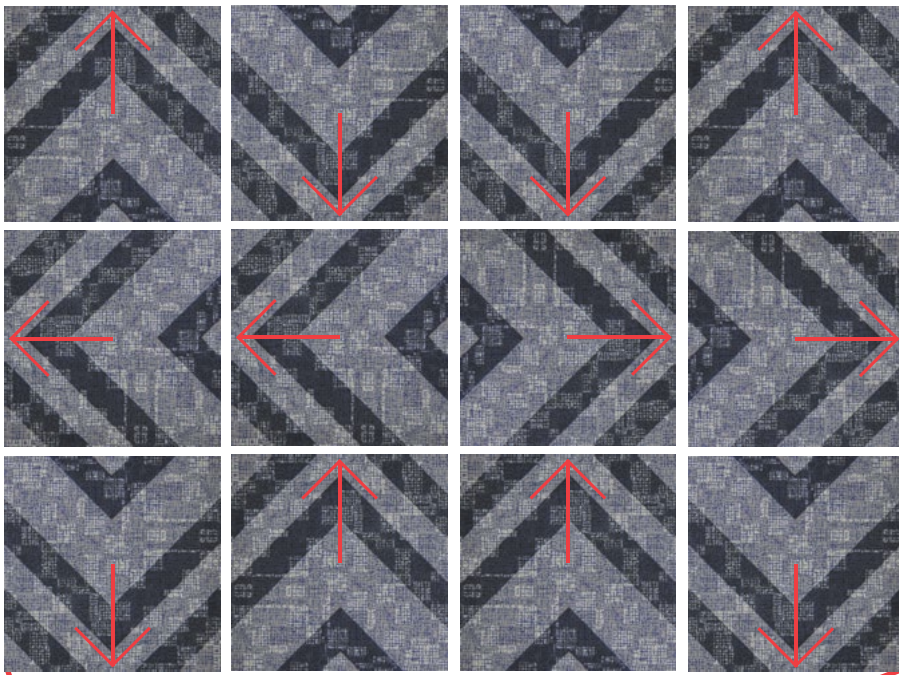




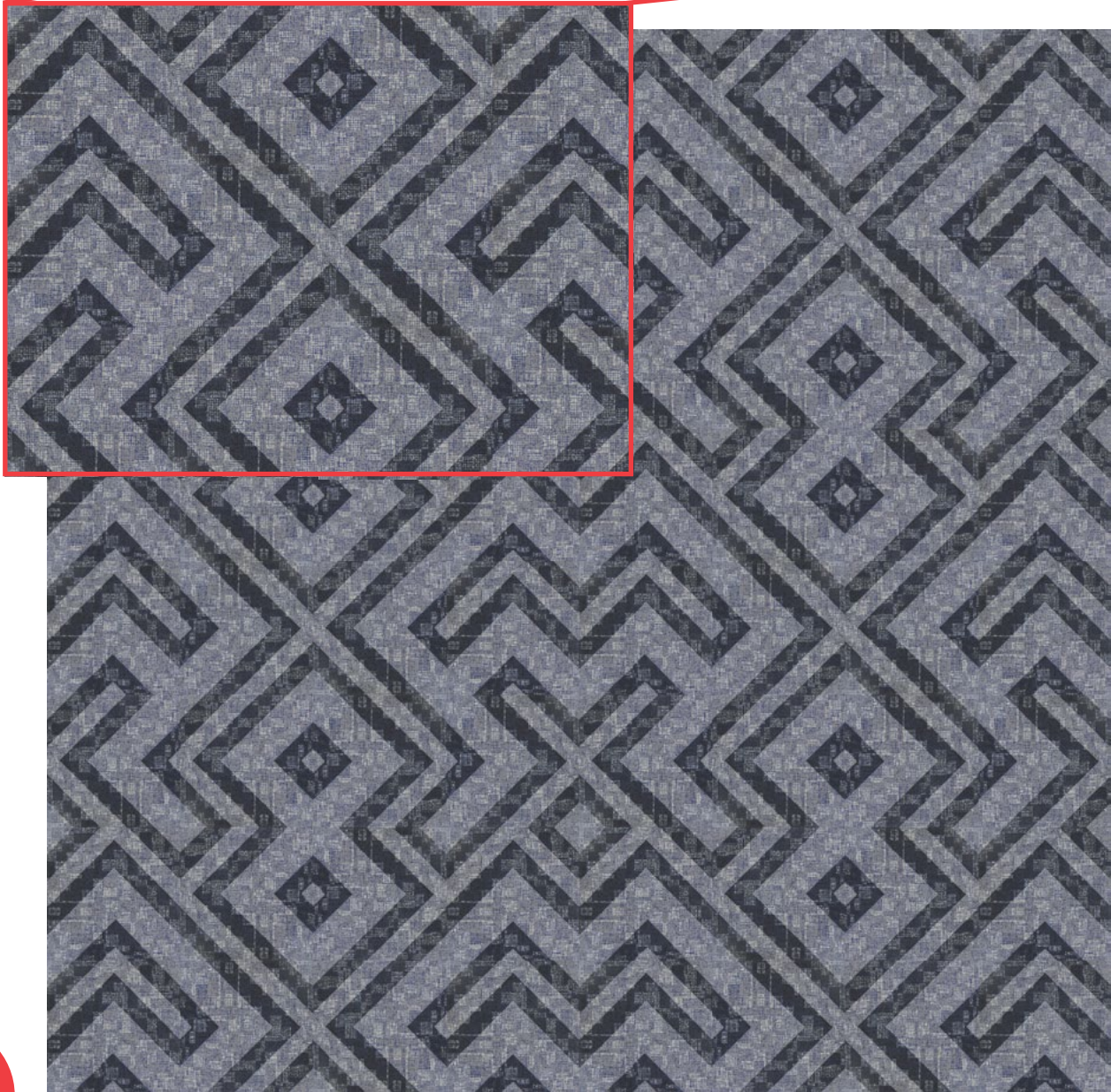
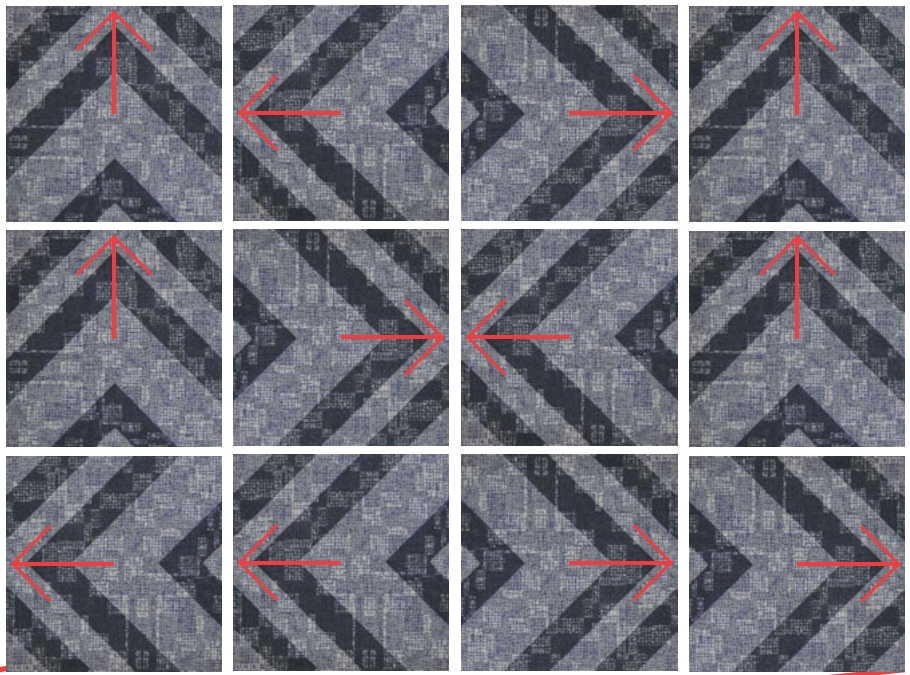




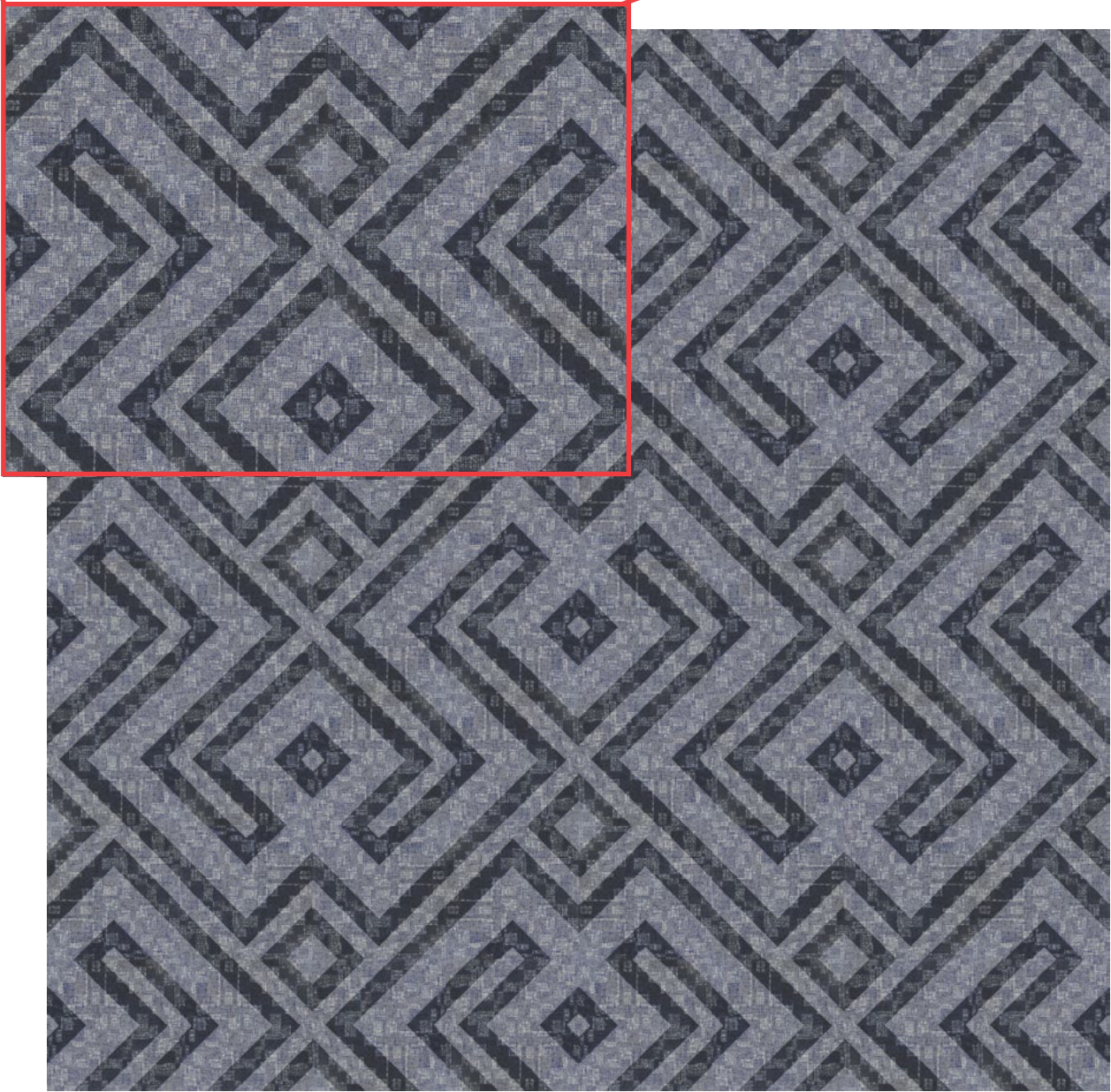
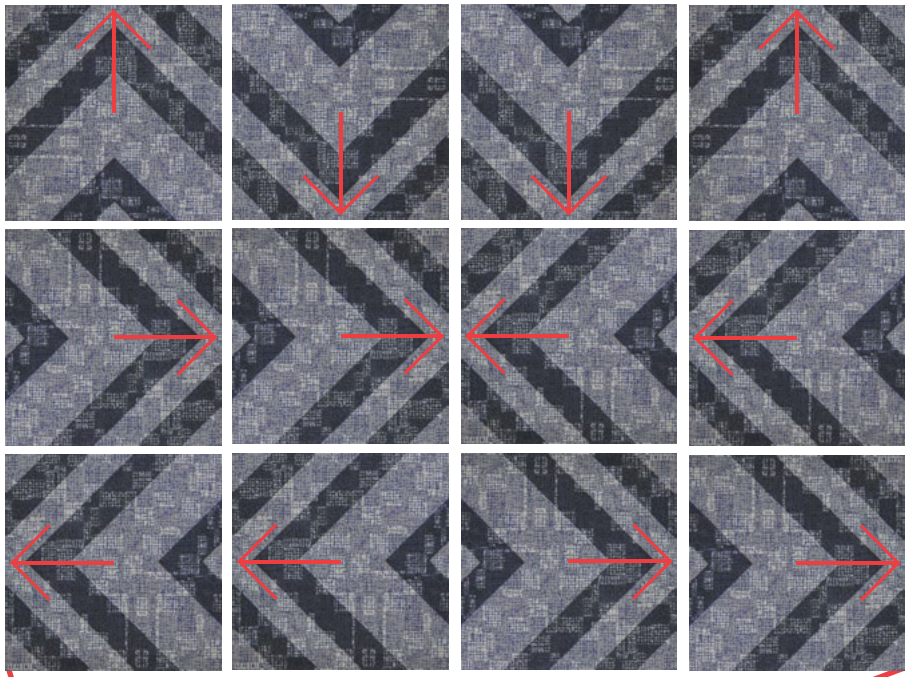




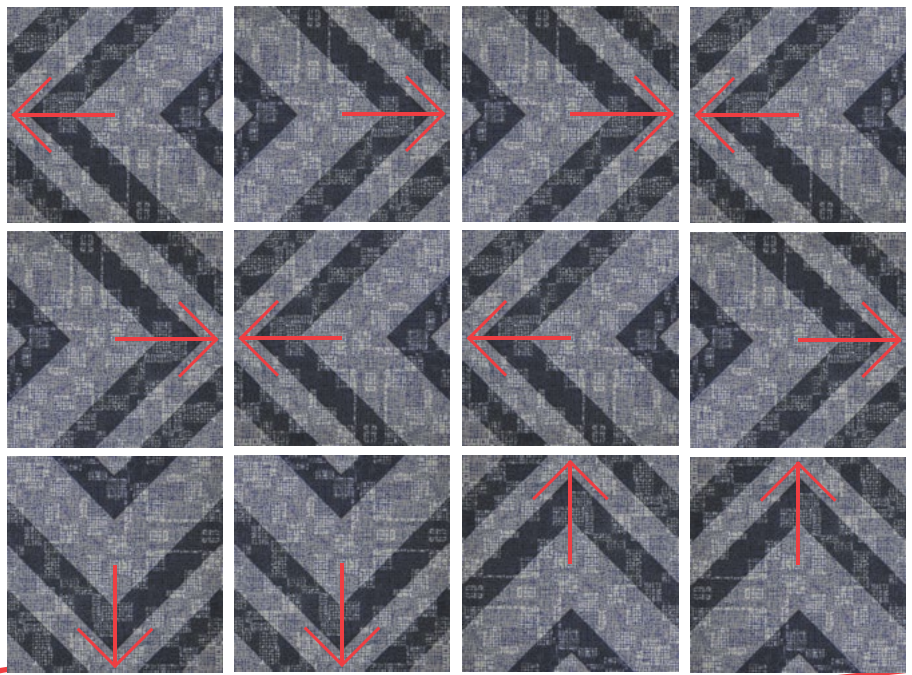




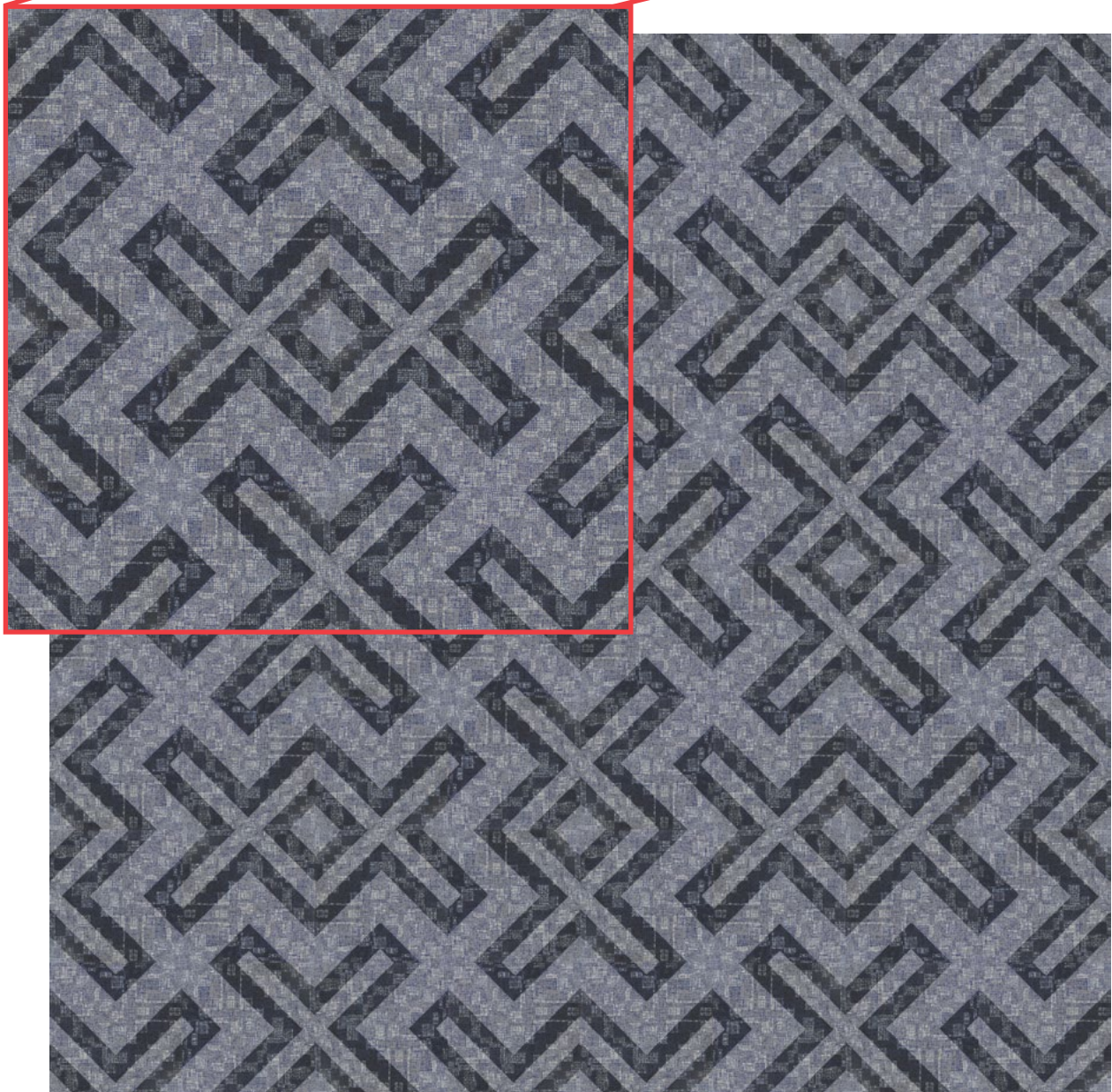
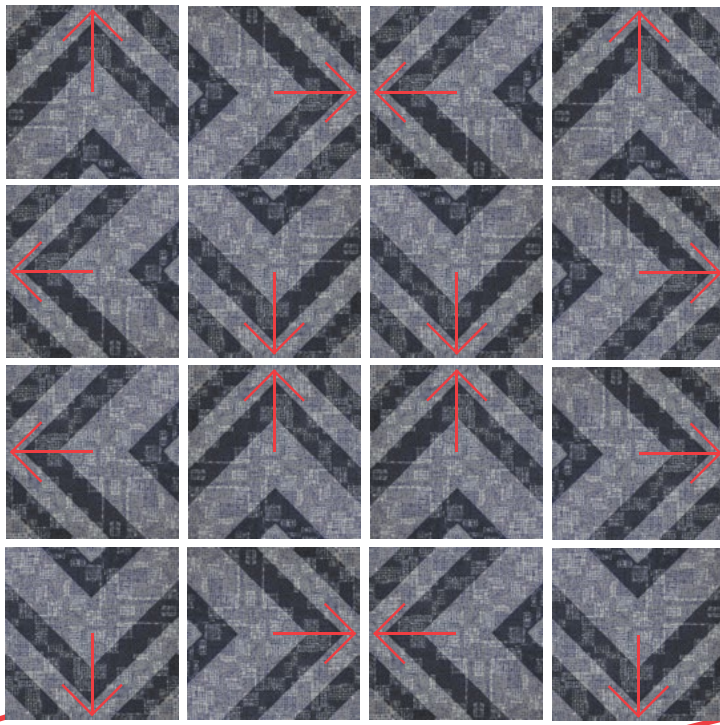




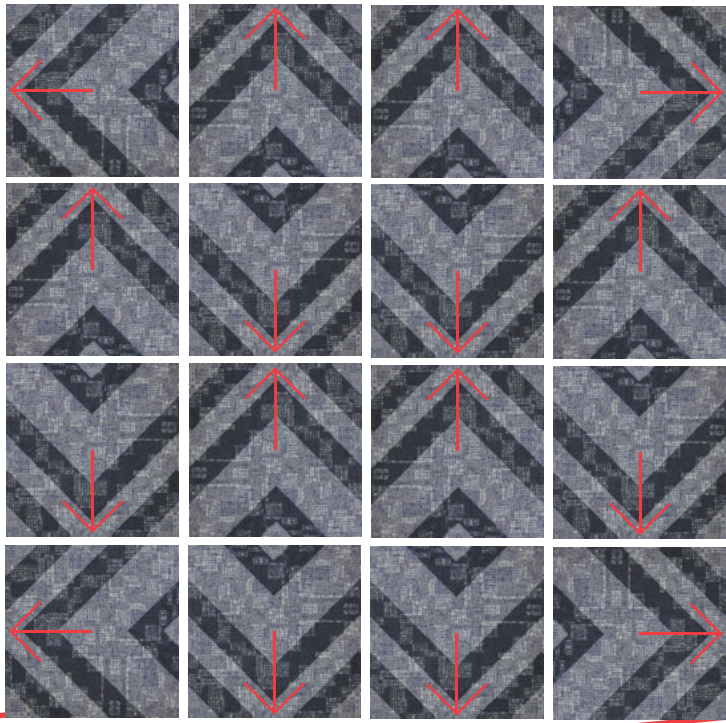




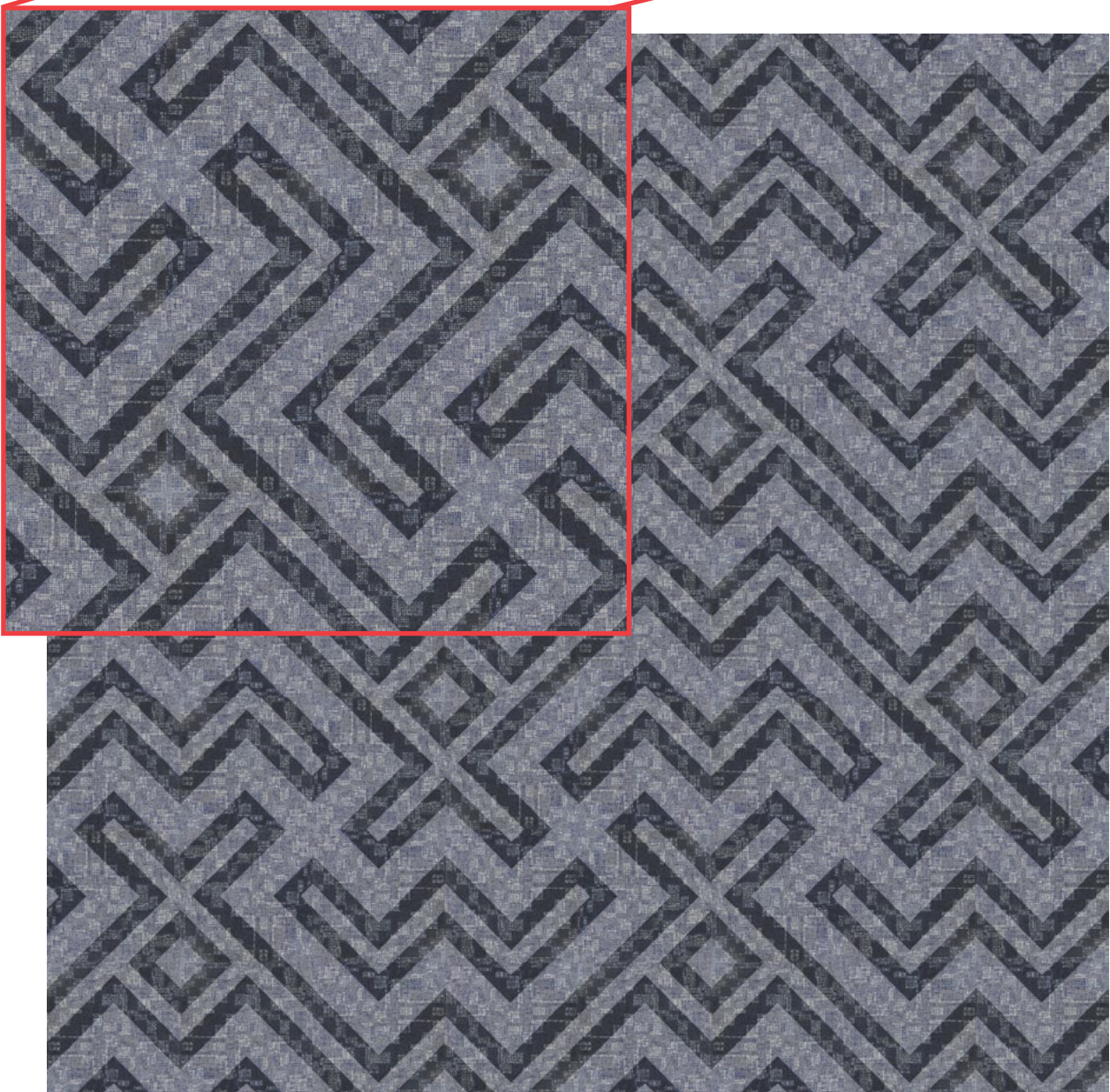
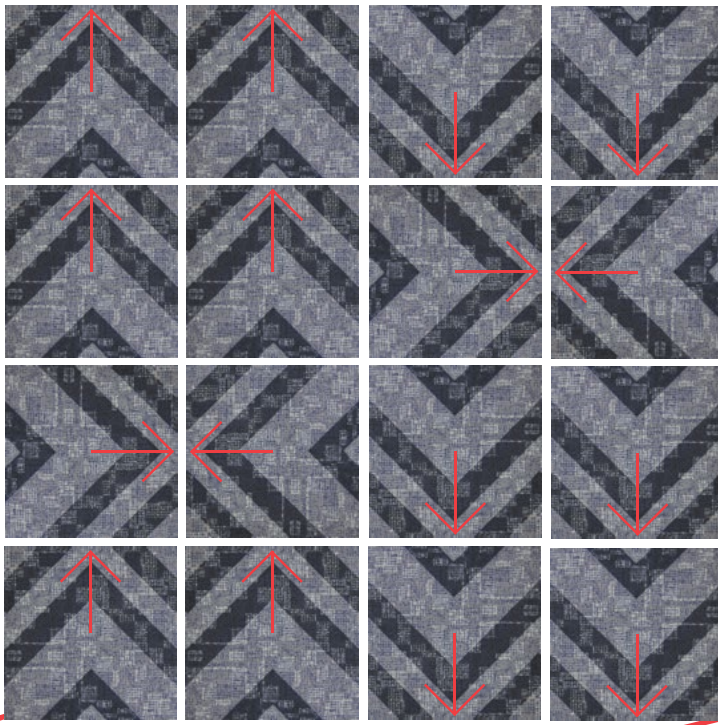




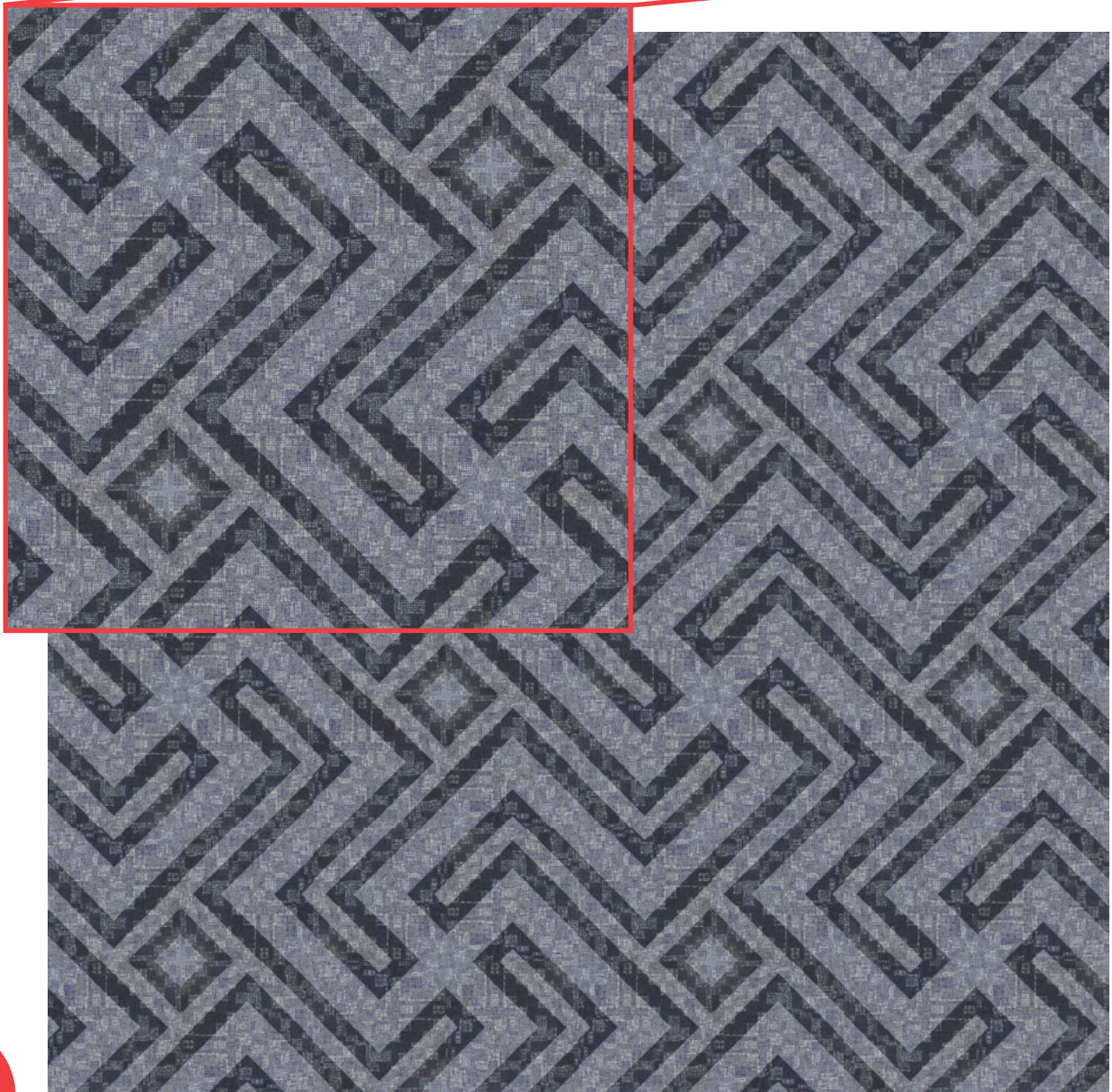
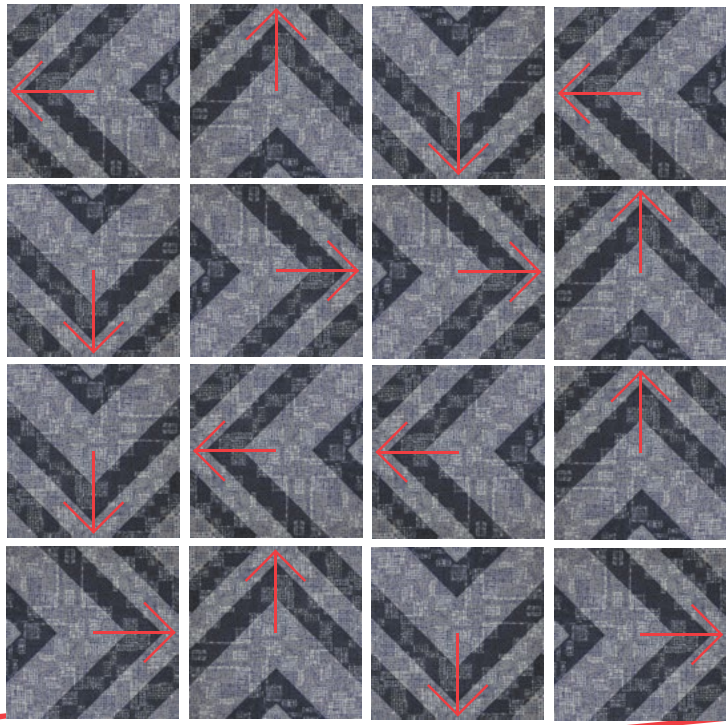




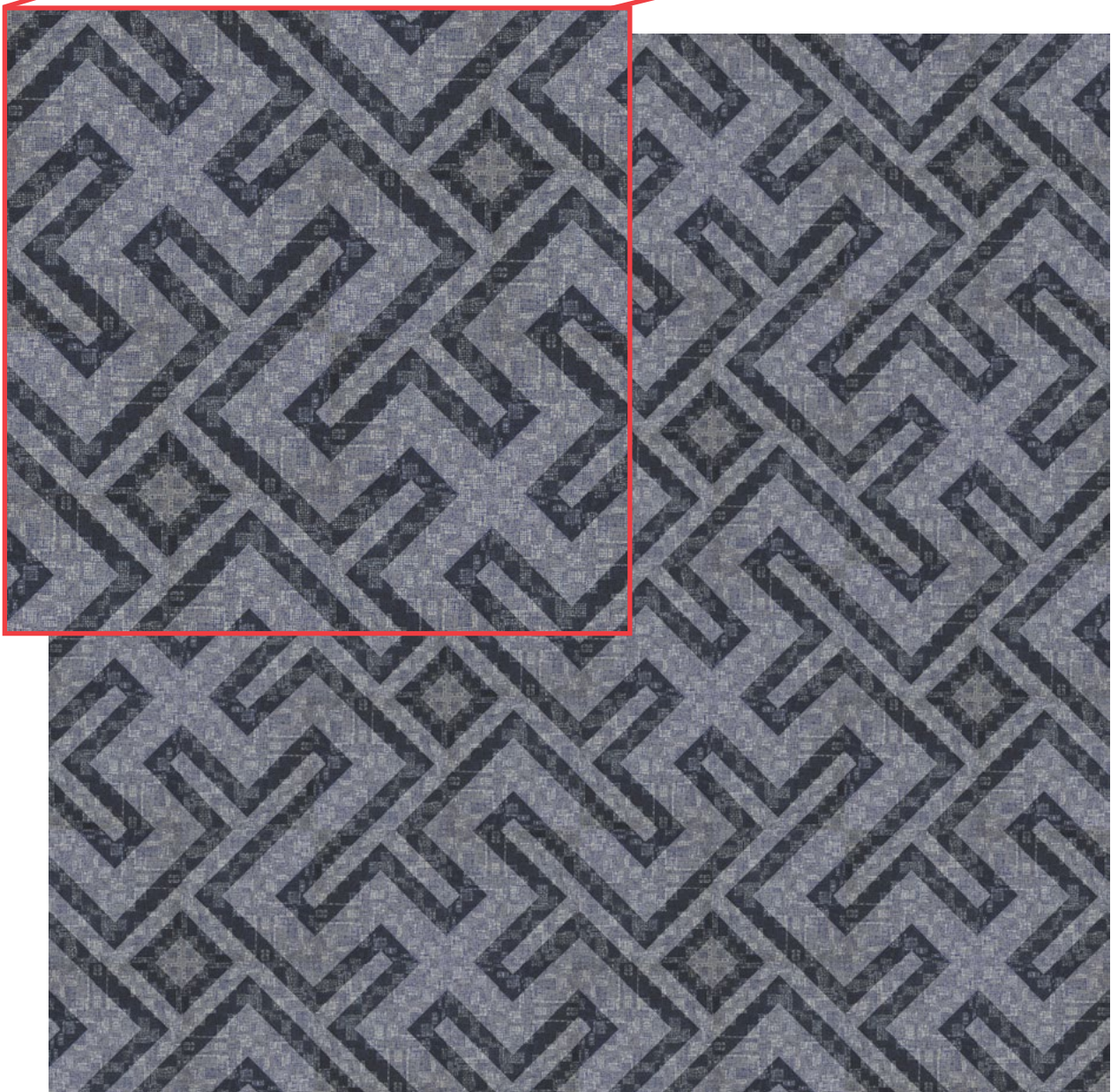
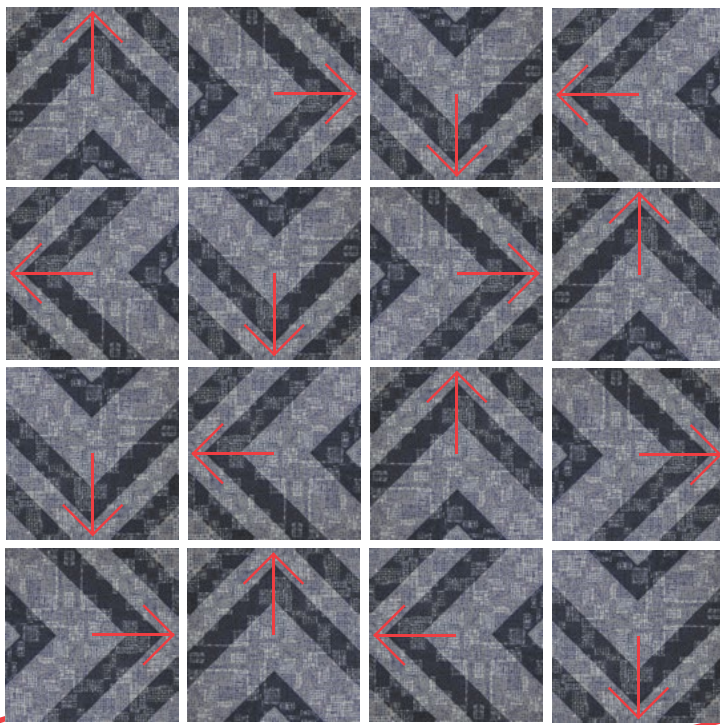




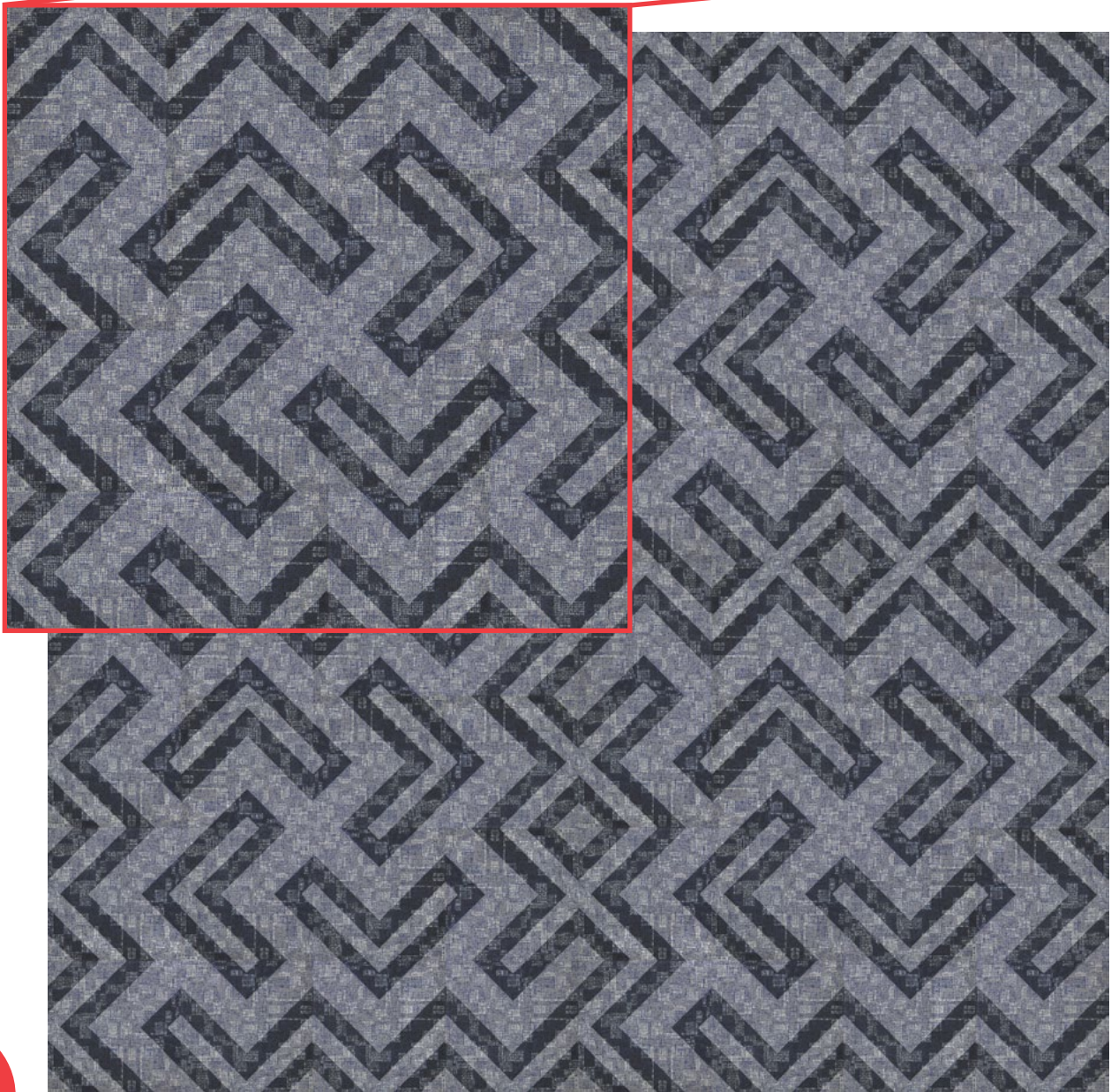
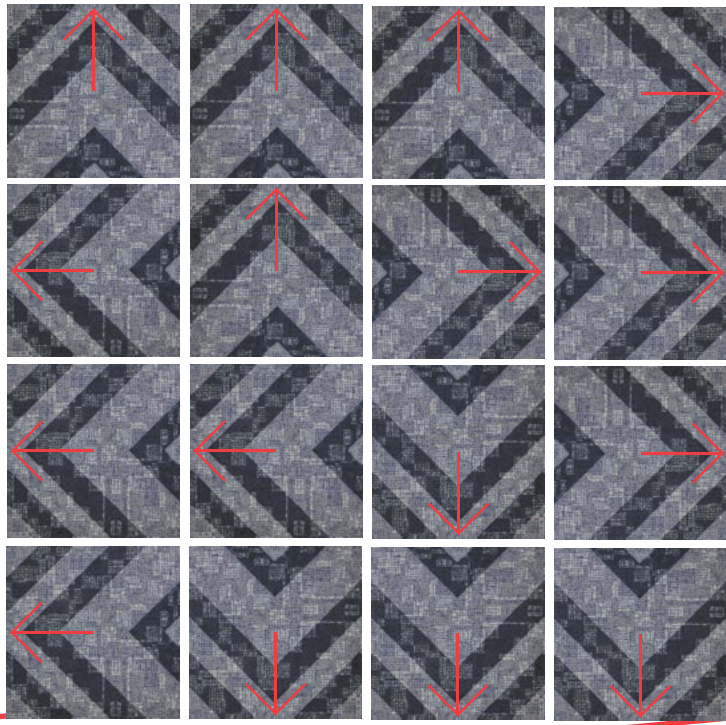
















## [compositions]

*By visually organizing the tiles to attract attention, special architectural spaces like entrances and intersections can be treated as focal points, creating symmetry and organization.*





















[randoms]

*Each 1 meter square tile is placed on the floor in random order so the direction of adjacent tiles or groups of tiles is not repeated. There is no recognizable pattern when tiles are set in this fashion. Meandering geometries with incidental focal points are characteristic of this method.*















