



Joy Carpets & Co.

NEON LIGHTS™

[CARPET • CARPET TILE • AREA RUGS]



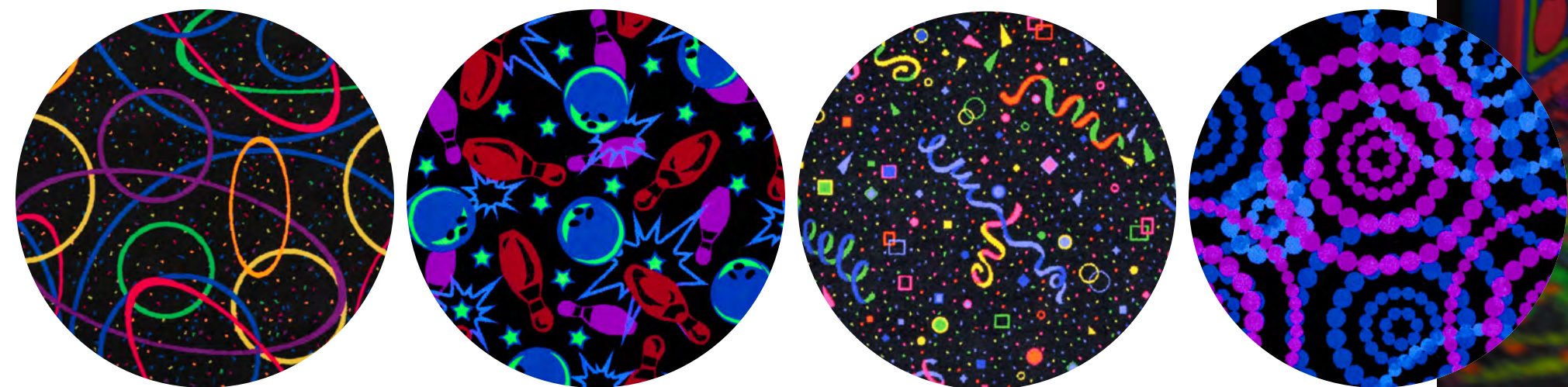
NEON LIGHTS™

[CARPET • CARPET TILE • AREA RUGS]

Neon Lights™ fluorescent dyed carpet, carpet tile and area rugs glow under black light and add an extra dimension to amusement facilities, night clubs, family entertainment centers and home arcades. These designs combine stunning fluorescent colors and exceptional durability to create one of the most innovative and unique floor coverings available.

Manufactured from premium nylon with high-definition digital injection dyeing, Neon Lights™ carpets are as durable as they are attractive. Backed by comprehensive stain and wear warranties, these products will maintain their original beauty for years to come in even the most active environments.

When creative, colorful, and versatile flooring is needed for that unique residential or commercial installation, look with confidence to Joy Carpets to satisfy your needs. Remember, fun never goes out of style, so choose Joy Carpets for the fastest way to a fantastic floor!



WHIMSICAL.
EYE-CATCHING.
FLUORESCENT.




Also available in area rugs



Lightspeed™
QuickShip Program

The carpets you need -
when you need them.

Running up against a deadline? Rely on Joy
Carpets to deliver - *fast*.

Enjoy quick and reliable shipping on 7 of our
most popular fluorescent dyed patterns.
Just look for the Lightspeed truck icon. 

The best part? ... It ships within 3 days!

Lightspeed™ is your best choice for trusted,
fast delivery on our most popular Neon
Lights™ styles.

CARPET 



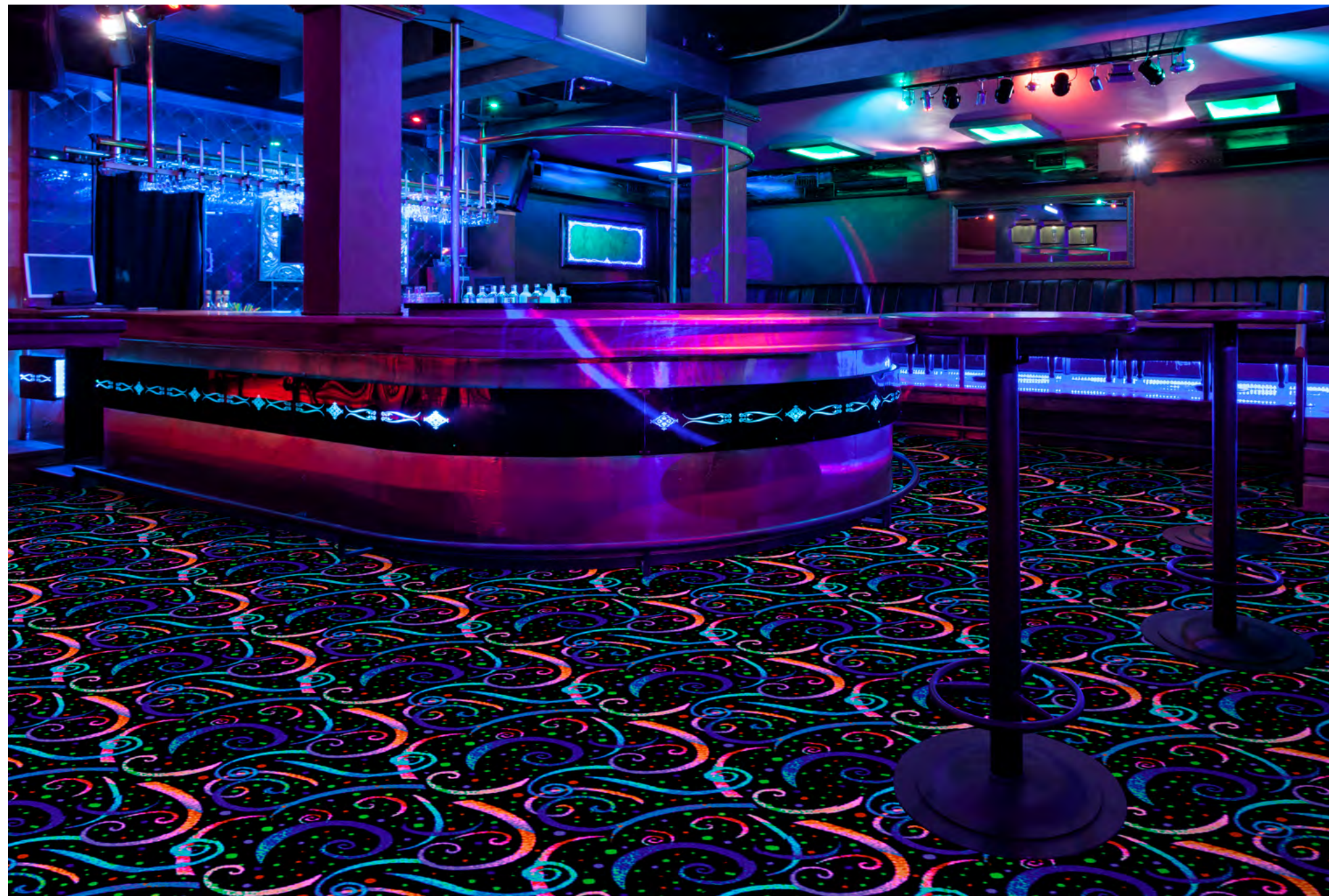
Lightspeed™ QuickShip
In stock and available to ship within 3 days!

CELEBRATION - 361 

DYNAMO - 455 



Also available in area rugs



Also available in area rugs





Lightspeed™ QuickShip
In stock and available to ship within 3 days!

FUN AND GAMES - 468 

HAVE A BLAST - 469 



Also available in area rugs



Also available in area rugs





Lightspeed™ QuickShip
In stock and available to ship within 3 days!

KAPOW - 449 

LOOPED - 450 



Also available in area rugs

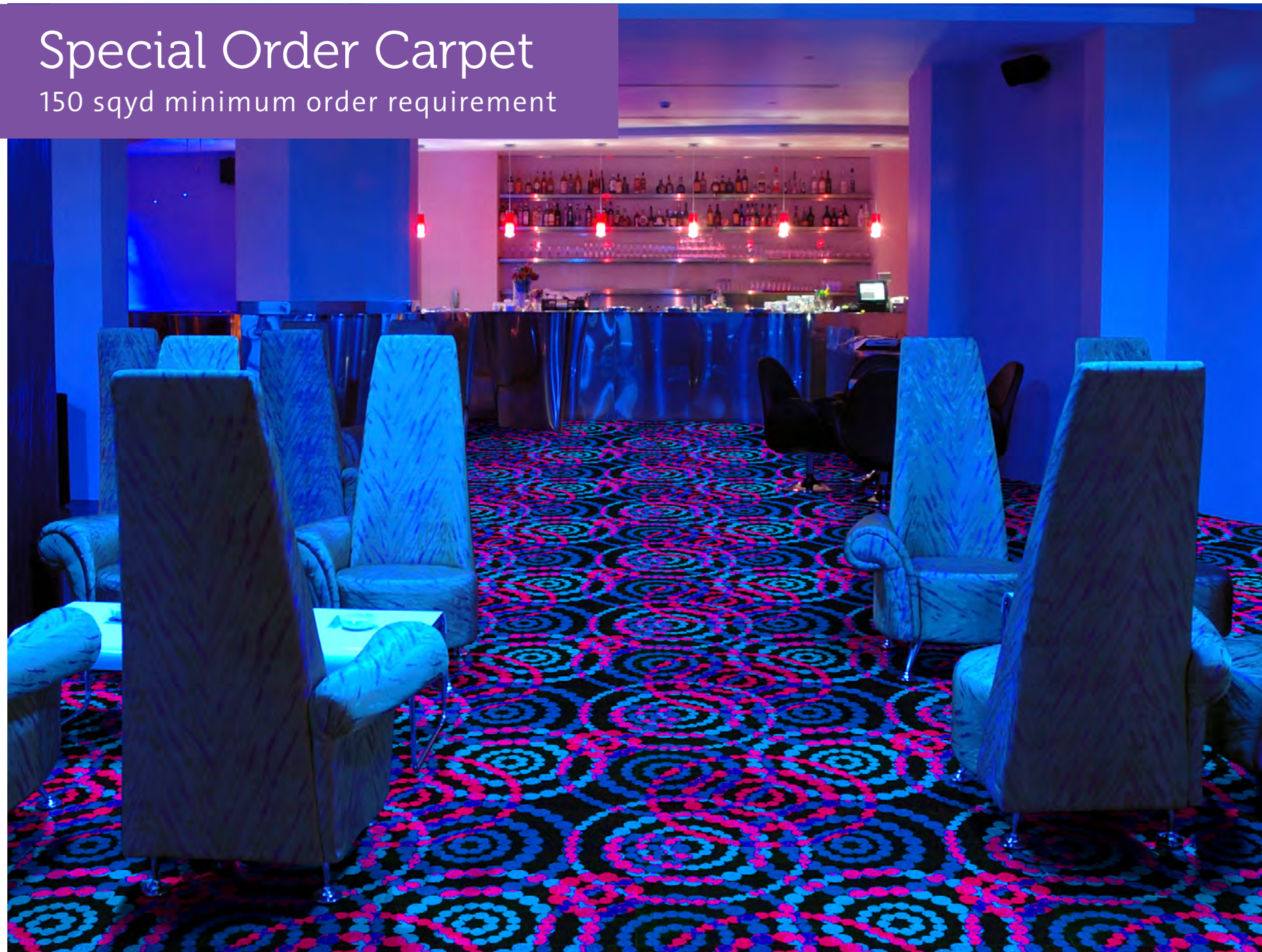


Also available in area rugs

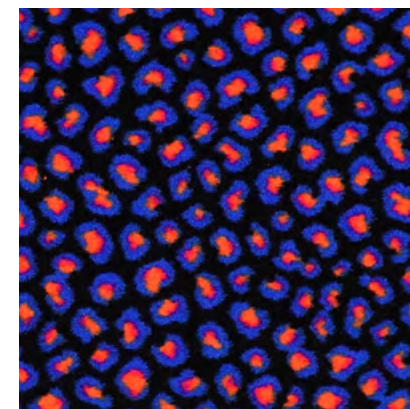


Special Order Carpet

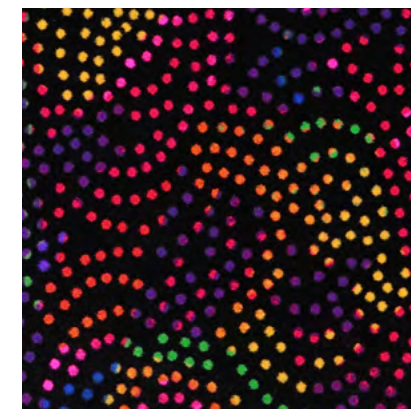
150 sqyd minimum order requirement



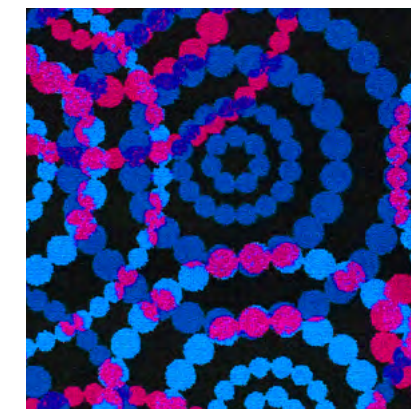
DOTTIE - 447



AFTERGLOW - 467



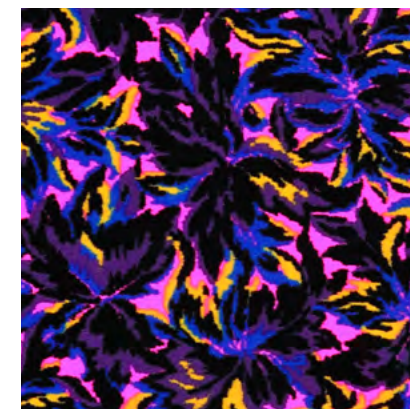
DANCING LIGHTS - 454



DOTTIE - 447



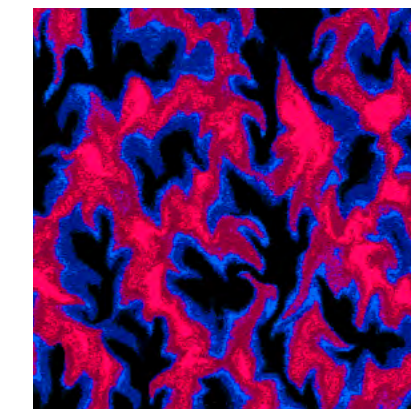
ELECTRIC SCROLL - 456



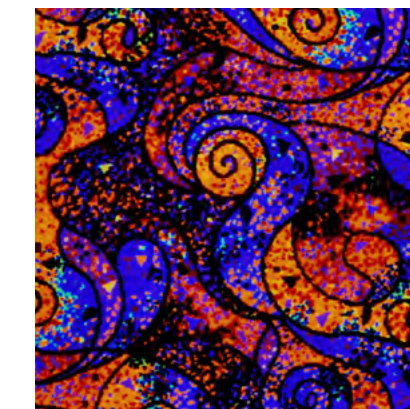
FLAMING FLORAL - 457



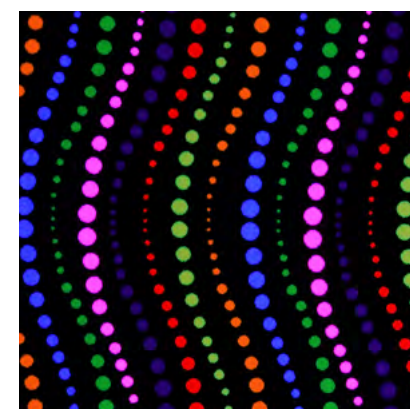
HOT TROPICS - 458



INFERNO - 442



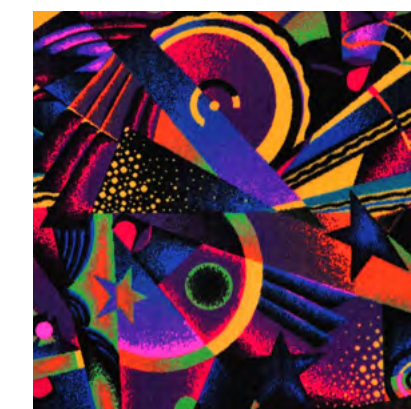
LAVA - 411



LIGHTSTREAM - 459



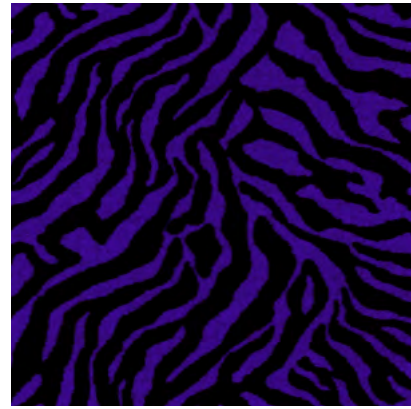
MIDNIGHT SAFARI - 460



MYSTIC - 461



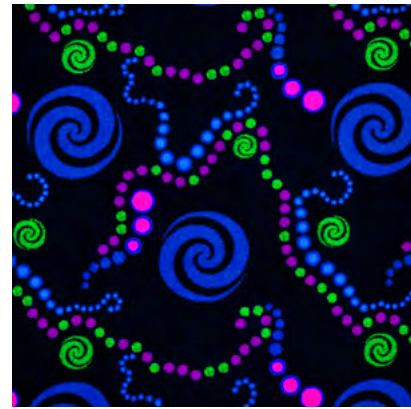
NIGHT MOVES - 462



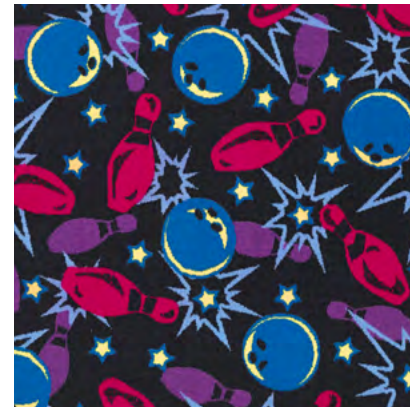
ON THE HUNT - 463



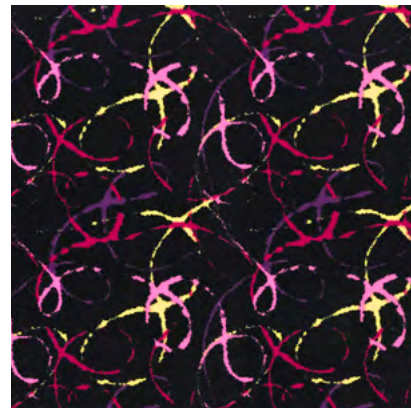
POGO - 451



POP BEADS - 452



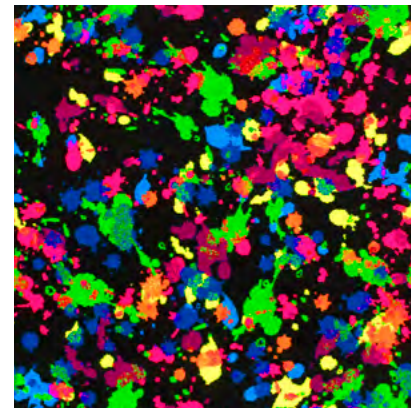
RETRO BOWL - 448



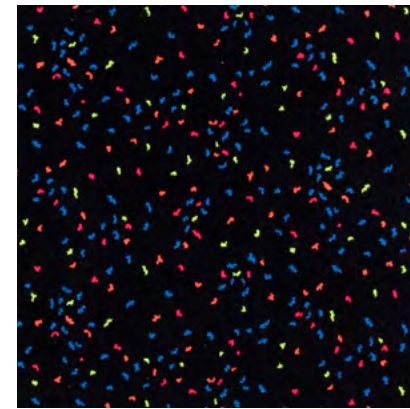
SILLY STRING - 443



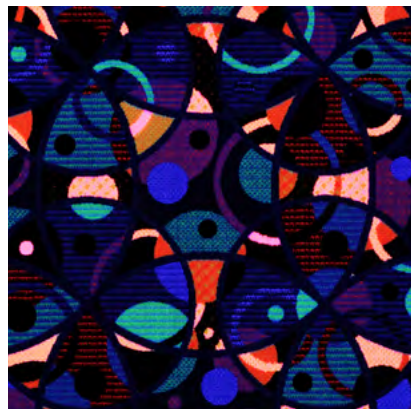
SPLAT - 446



SPLATTER - 445



STARRY NIGHT - 391



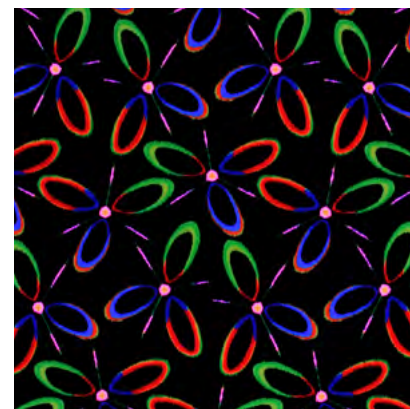
SUPERNATURAL - 464



SWIRLED - 453



UNDER THE SEA - 444



WHIRLIBIRD - 466



ON THE HUNT - 463

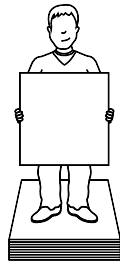




CARPET TILE

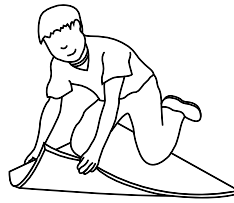
The carpet tile you need - easy as 1-2-3!

1



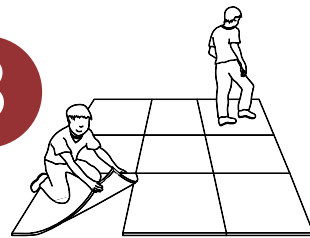
- Easy to handle. No hassle!
- Guaranteed pattern match for seamless installation

2

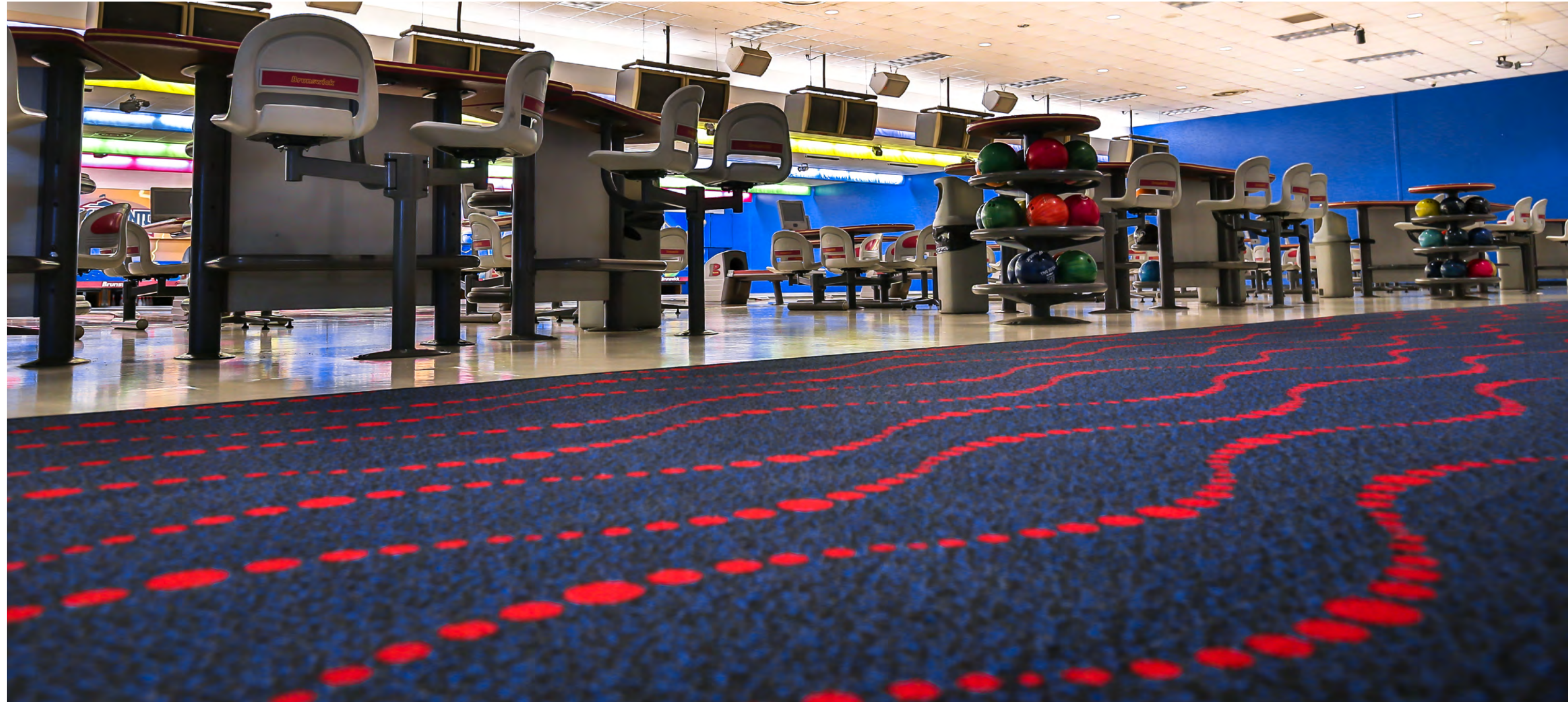


- Easy to install. No adhesives required!
- Integrated moisture barrier protects against spills

3



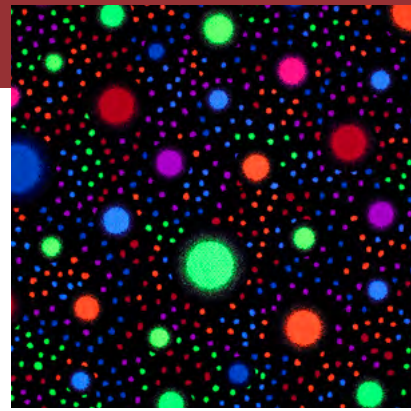
- Attached cushion provides support and longevity.
- Easy to replace. No down time!



*Minimum order requirements

Special Order Carpet Tile

300 sqyd minimum order requirement



AURORA - 935



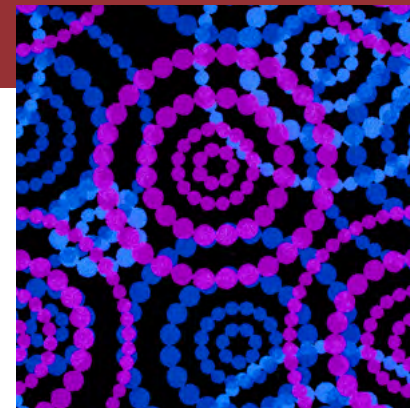
BIG BANG - 936



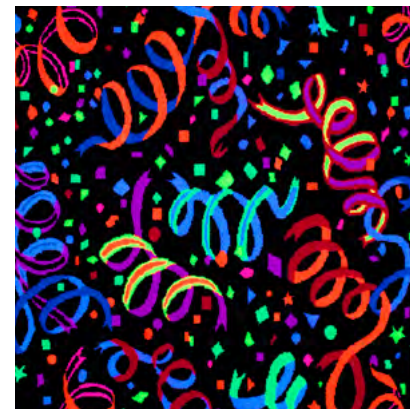
BROADWAY - 994



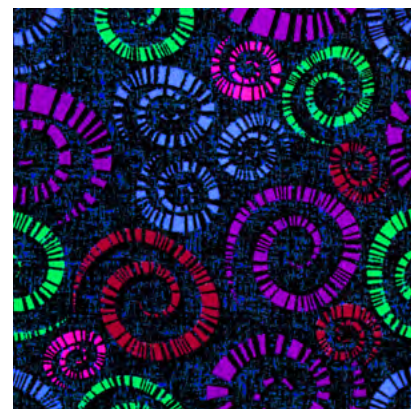
GRAND FINALE - 930



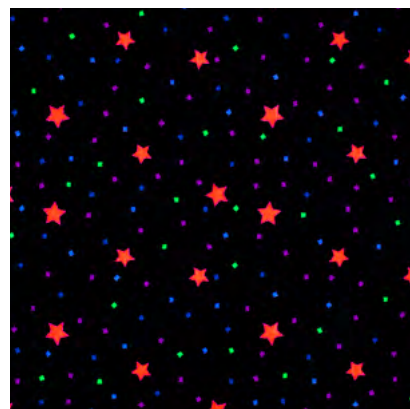
DOTTIE - 938



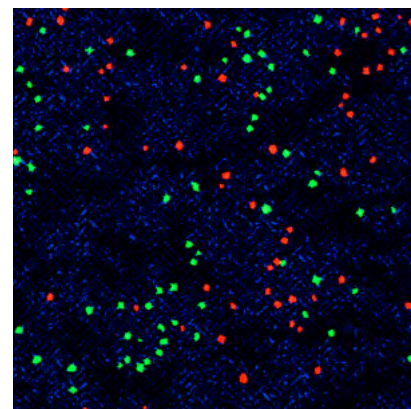
FRENCH QUARTER - 934



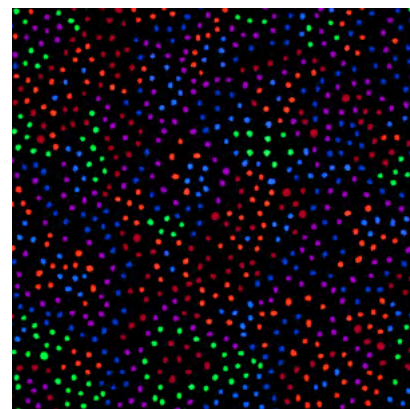
BROADWAY - 994



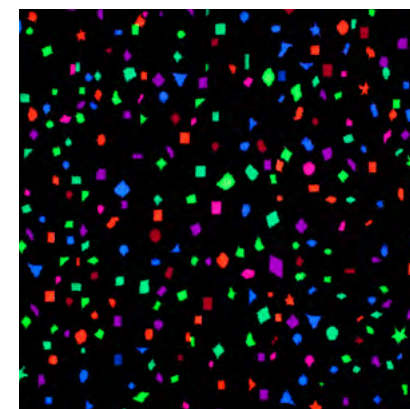
CELESTIAL - 937



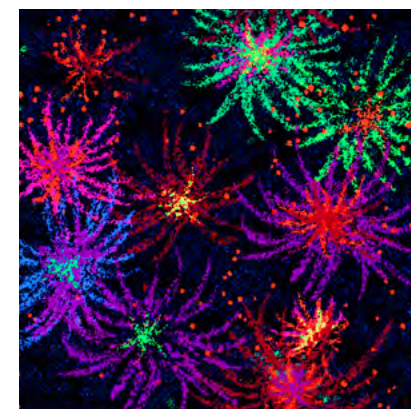
DEEP SPACE - 931



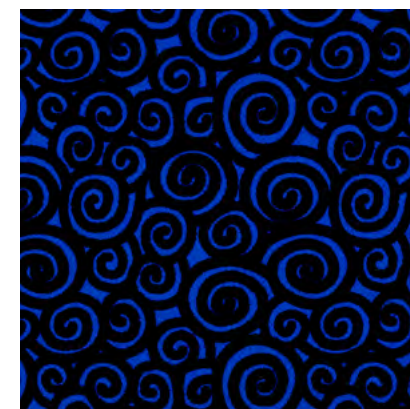
DOTS AGLOW - 950



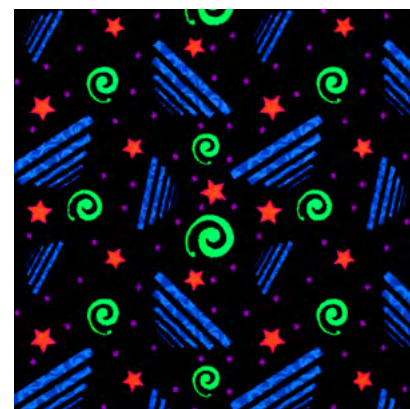
GOLD RUSH - 933



GRAND FINALE - 930



NEBULA - 932

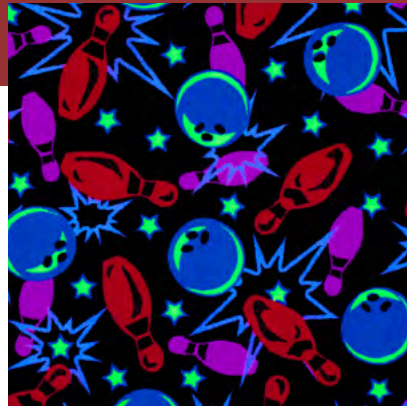


POGO - 939

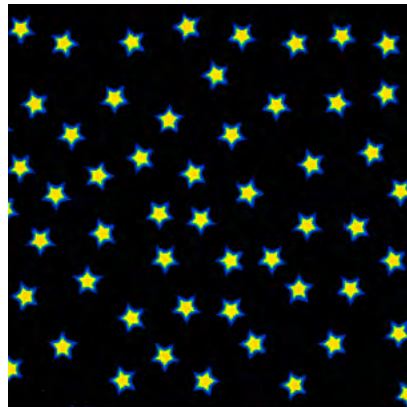


Special Order Carpet Tile

300 sqyd minimum order requirement



RETRO BOWL - 940



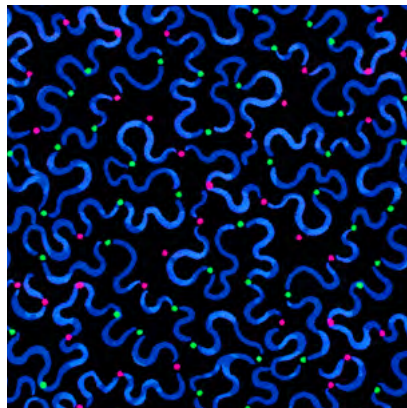
SEEING STARS - 929



RETRO BOWL - 940



WAVELENGTH - 944



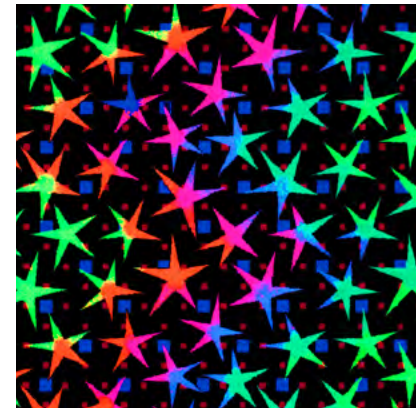
SERPENTINE - 928



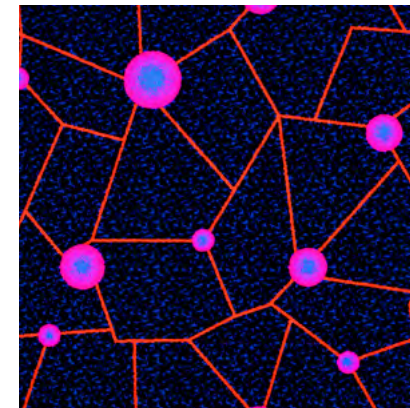
SPECTRUM - 941



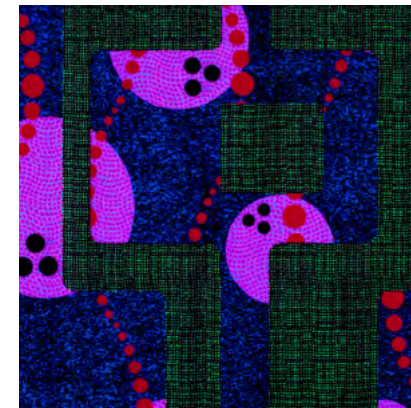
SPEED DEMON - 952



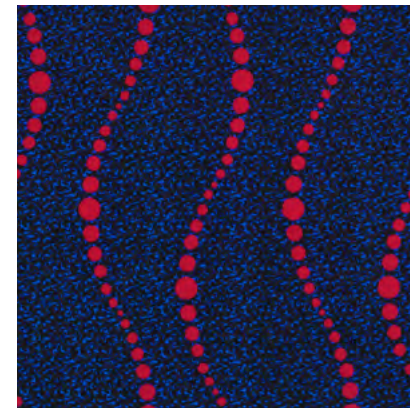
STARSTRUCK - 951



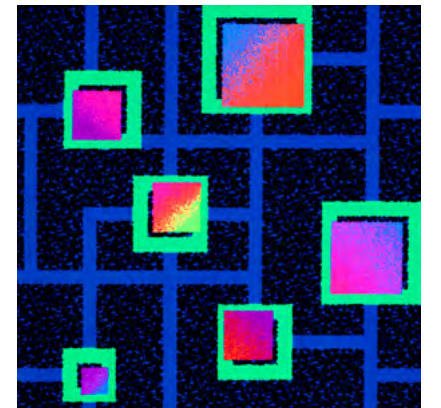
TECTONIC - 942



TEN PINS - 943



WAVELENGTH - 944



ZODIAC - 945





General:

Description: Cut pile broadloom
 Dye Method: **Digital dye injection**
 Dye Resolution: 256 dpi
 Fiber: **Premium BCF Type 6 Nylon**
 Tufted Face Weight: 18 oz / sqyd
 Gauge: 1/10th
 Pile Height: .186 in.
 Primary Backing: Woven polypropylene
 Secondary Backing: ActionBac
 Secondary Backing (optional): KangaTRAC polyurethane cushion
 Anti-Soil and Stain Protection: **Integrated soil and stain treatment**
 Antimicrobial Protection: **Integrated mold, mildew, and odor treatment**
 Broadloom Width: 12'
 Origin: USA

Performance:

Static Electricity: < 3.5 KV (AATCC-134)
 Traffic: Commercial
 Indoor Air Quality:



Green Label Plus®
 Certifies product exceeds most stringent indoor air quality standards and are best suited for living, working, and learning environments

Flammability:

Radiant Panel: > 0.45 watts/cm2 (ASTM – E648, Class I)
 NBS Smoke Chamber: < 450 flaming and non-flaming (ASTM-E662 NFPA-258)

Maintenance:

Spot Cleaning: Spot clean with approved carpet cleaner. Follow label directions
 Vacuum regularly
 Professional Cleaning: Hot water extraction

Commercial Limited Warranties:

20 Year 10% Fiber Loss Abrasive Wear Warranty - Abrasive wear of surface pile guaranteed not to exceed 10%
 20 Year Texture Retention Warranty - Guaranteed to maintain appearance under heavy foot traffic
 10 Year Soil and Stains Warranty - Provides total fiber protection against soil and stains
 Lifetime Antistatic Warranty - Built-in static control fiber
 10 Year Tuft Bind Warranty - Guaranteed to maintain superior tuft bind in high traffic areas
 Fade Resistance (for indoor use only) - Resists fading under normal indoor use

Specifications are subject to normal manufacturing tolerance. Actual carpet color may vary.



CARPET

CARPET TILE

General:

Description: Textured loop pile carpet tile
 Dye Method: **PrintWorks™ precision dye technology**
 Dye Resolution: 400 dpi
 Fiber: **Premium WearOn® Nylon**
 Total Weight: 89 oz. / sq. yd.
 Tuft Bind: Exceeds industry standards
 Gauge: 1/10th
 Pile Height: .27 in.
 Backing: StayTac® cushion – PVC free. No adhesives required
 Delamination: Exceeds industry standards
 Tile Size: 1m x 1m (39.4" x 39.4")
 Origin: U.S.A.

Anti-Soil and Stain Protection: **StainSmart® triple-action protectant**

Performance:

Static Electricity: < 3.5 KV (AATCC-134)
 Traffic: Heavy commercial
 Indoor Air Quality:



Green Label Plus®
 Certifies products exceed most stringent indoor air quality standards and are best suited for living, working, and learning environments

Flammability:

Radiant Panel: > 0.45 watts/cm2 (ASTM – E648, Class I)
 NBS Smoke Chamber: < 450 (ASTM-E662 NFPA-258)
 Methenamine Tablet: Self-extinguishing (DOC FF-1-70)

Maintenance:

Spot Cleaning: Spot clean with approved carpet cleaner. Follow manufacturer recommendations. Vacuum regularly
 Professional Cleaning: Hot water extraction

Warranties:

Lifetime Face Fiber Wear
 Lifetime Soil and Stain Protection
 Lifetime Edge Ravel
 Lifetime Antistatic Protection
 Lifetime Floor Compatibility
 Lifetime Floor Release
 Lifetime Moisture Resistance
 Lifetime Tuft Bind
 Lifetime Color Pattern Permanency
 Lifetime Cushion Resiliency
 Lifetime Delamination
 Lifetime Dimensional Stability

Specifications are subject to normal manufacturing tolerance. Actual carpet color may vary.





NEON LIGHTS™

[CARPET • CARPET TILE • AREA RUGS]

Neon Lights™ is an industry-leading collection of carpet designed for commercial amusement facilities, family entertainment centers, and home arcades. These designs combine stunning fluorescent colors and exceptional durability to create one of the most innovative and unique floor coverings available.

Features include:

- Superior wear resistance
- Digital dye injection for maximum penetration and color retention
- Soil and stain protection for peace of mind and ease of maintenance
- Built-in antistatic fiber for permanent static control
- Green Label Plus indoor air quality certified
- Class I Flammability Rating
- Made in the USA

Detailed specifications and warranties can be found at joycarpets.com/resources

Specifications are subject to normal manufacturing tolerance.
Actual carpet color may vary slightly from product photo.

©2025 Joy Carpets & Co. all rights reserved



for the world

Joy Carpets & Co.
2640 Lafayette Road
Fort Oglethorpe, GA 30742
706.866.3335
joycarpets.com