



Joy Carpets & Co.

ON DEMAND™

[CARPET TILE SOLUTIONS FOR DISTINCTIVE INTERIORS]





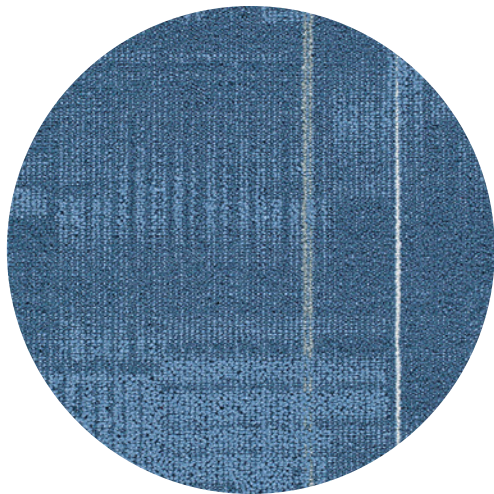
# ON DEMAND™

[CARPET TILE SOLUTIONS FOR DISTINCTIVE INTERIORS]

---

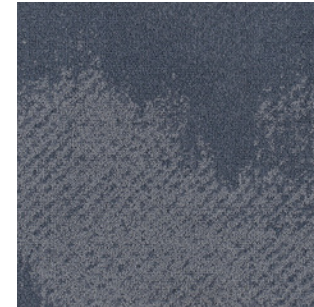
Take your room from ordinary to extraordinary with On Demand™. Designed for distinctive, high-traffic interiors, these carpet tiles are available in designs and colors that express personal style and maintain their original beauty in even the most active environments.

Available to ship within 72 hours, never worry about project deadlines again...On Demand™ is guaranteed to deliver on time, every time.

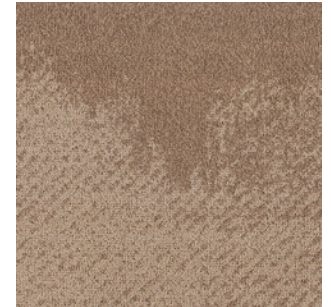




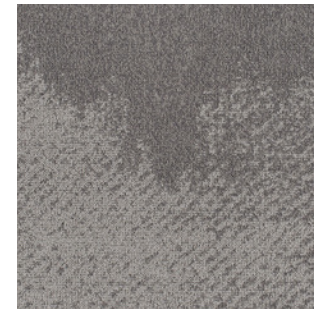
# BURNISHED 1002



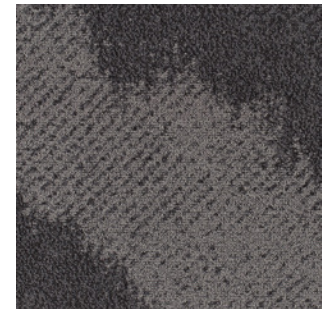
01 Blueprint



02 Camel



03 Graphite



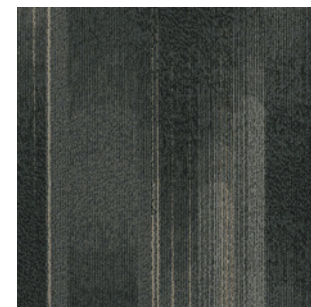
04 Iron



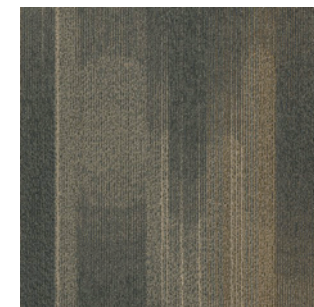
05 Noir



# DIVERSIONS 1005



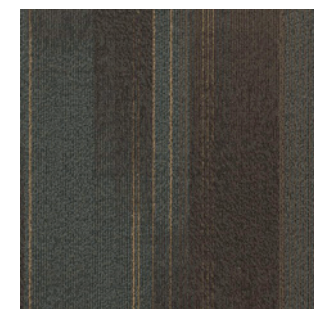
01 Carbon



02 Earthtone



03 Sapphire



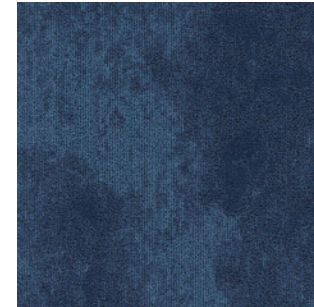
04 Sepia



05 Stone



# HIGH TIDE 1010



01 Baltic Blue



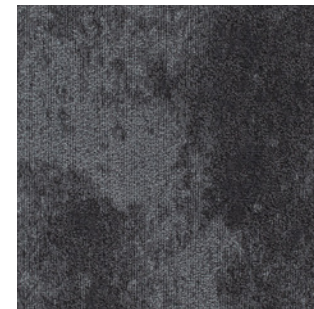
02 Nautilus



03 Oyster



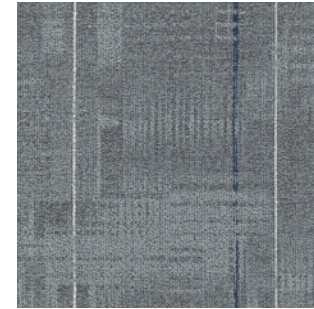
04 Stingray



05 Volcanic



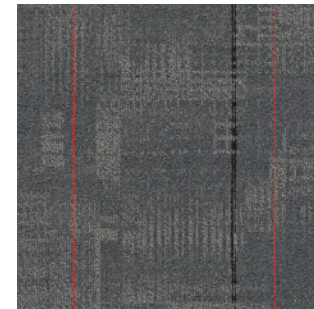
# MAKES SENSE 1006



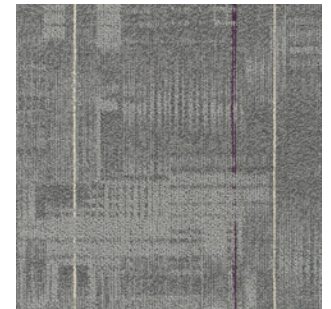
01 Block Print



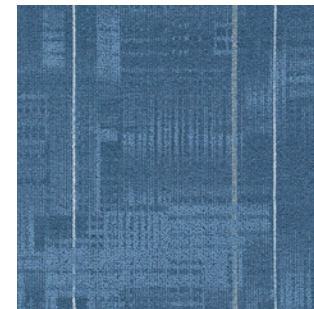
02 Canvas



03 Charcoal



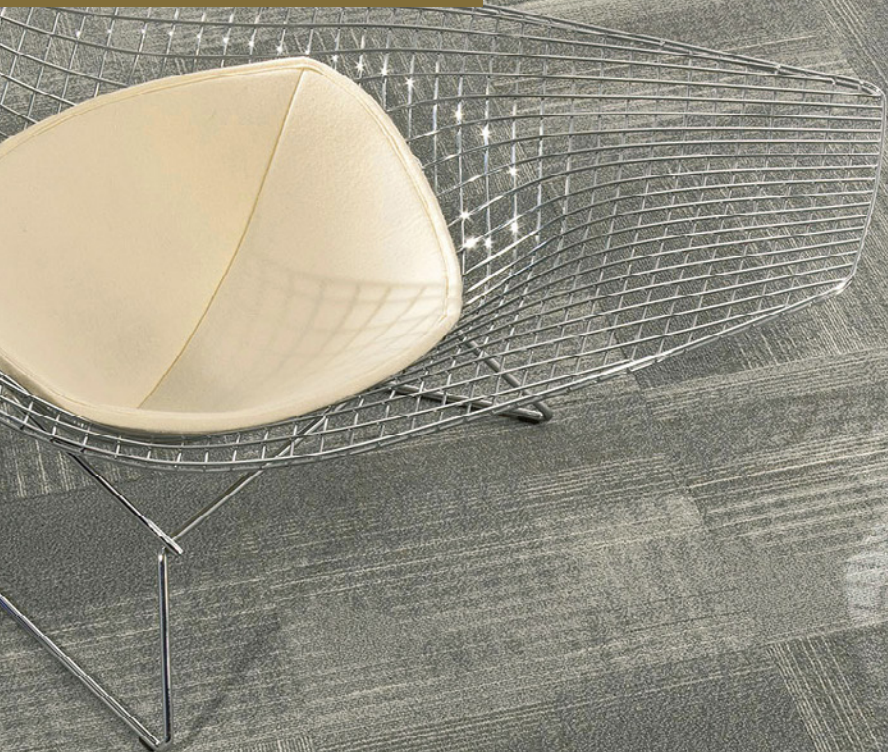
04 Clay



05 Ultramarine



# NEXUS 1001



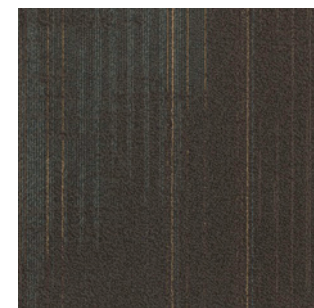
01 Carbon



02 Earthtone



03 Sapphire



04 Sepia



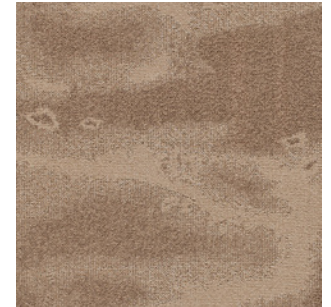
05 Stone



# OIL AND WATER 1003



01 Blueprint



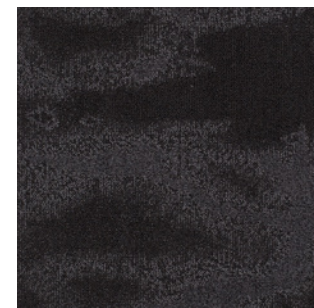
02 Camel



03 Graphite



04 Iron



05 Noir



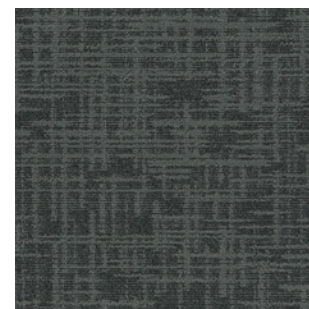
# OUTER BANKS 998



01 Dark Slate



02 Fossil



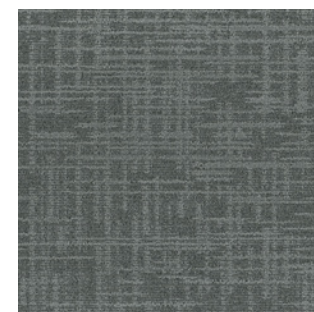
03 Leaden



04 Midnight



05 Shadow



06 Silverstone



07 Suede



08 Umber



# OVERDRIVE 1007



01 Dark Slate



02 Fossil



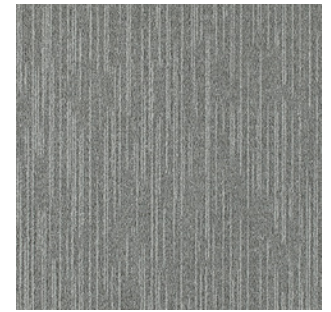
03 Leaden



04 Midnight



05 Shadow



06 Silverstone



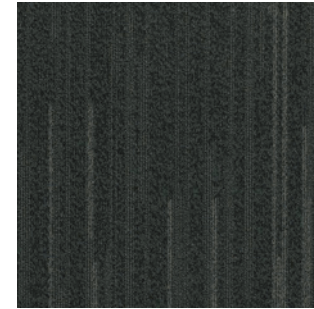
07 Suede



08 Umber



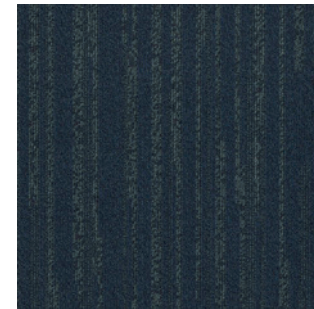
# QUICKEN 1004



01 Carbon



02 Earthtone



03 Sapphire



04 Sepia



05 Stone



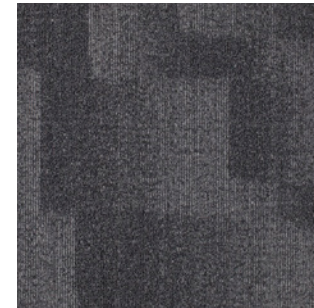
# REPLICATE 1009



01 Dark Slate



02 Fossil



03 Leaden



04 Midnight



05 Shadow



06 Silverstone



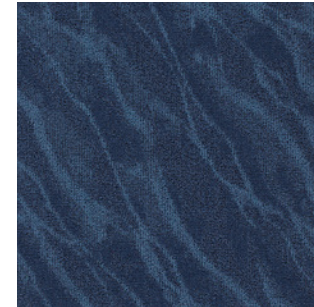
07 Suede



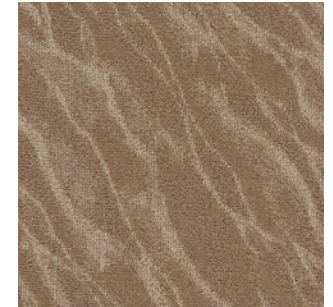
08 Umber



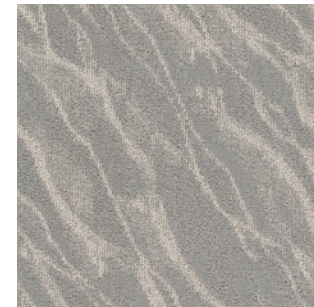
# RIVERINE 995



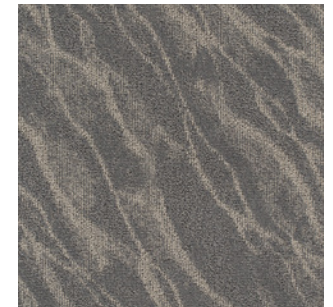
01 Baltic Blue



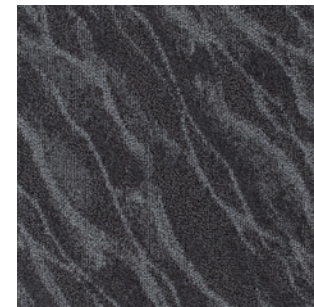
02 Nautilus



03 Oyster



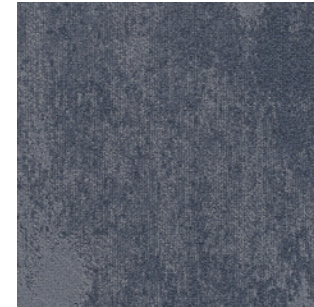
04 Stingray



05 Volcanic



# STATIC 997



01 Blueprint



02 Camel



03 Graphite



04 Iron

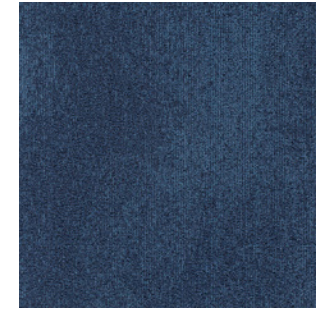


05 Noir

Tile Size: 50cm x 50cm



# UNDERSTATEMENT 999



01 Baltic Blue



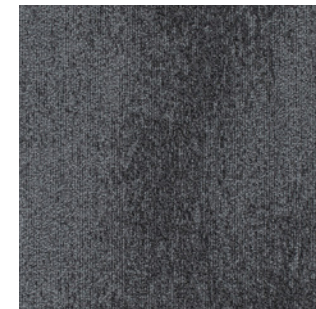
02 Nautilus



03 Oyster



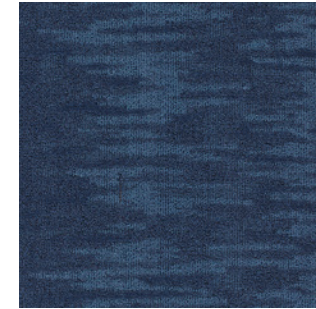
04 Stingray



05 Volcanic



# UP AND AWAY 1008



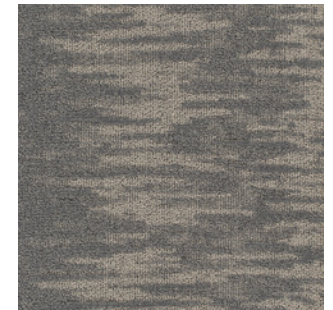
01 Baltic Blue



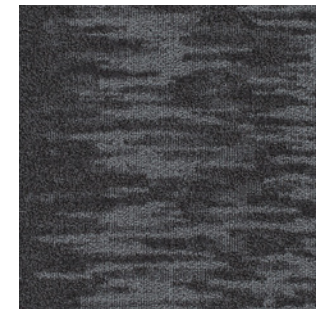
02 Nautilus



03 Oyster



04 Stingray



05 Volcanic



# INGRAINED 996



01A Beech Light



01B Beech Medium



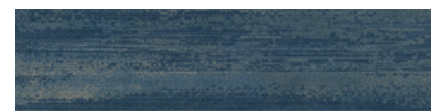
01C Beech Dark



01D Beech Grass



02A Cerulean Light



02B Cerulean Medium



02C Cerulean Dark



02D Cerulean Navy

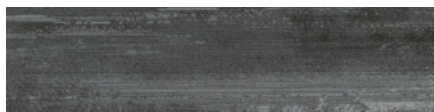
Ingrained in 01C Beech Dark and 01D Beech Grass

Tile Size: 25cm x 1m





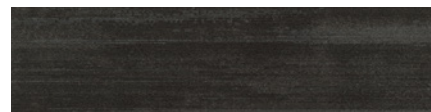
Ingrained in 07C Silver Dark and 07D Silver Sky



03A Charcoal Light



03B Charcoal Medium



03C Charcoal Dark



03D Charcoal Frost



04A Mocha Light



04B Mocha Medium



04C Mocha Dark



04D Mocha Black



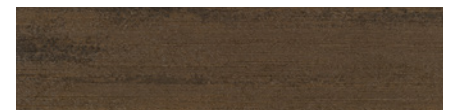
05A Nutmeg Light



05B Nutmeg Medium



05C Nutmeg Dark



05D Nutmeg Rust



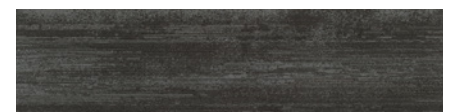
06A Pewter Light



06B Pewter Medium



06C Pewter Dark



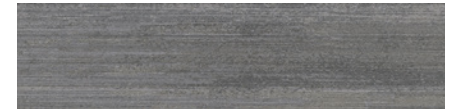
06D Pewter Ebony

Tile Size: 25cm x 1m





07A Silver Light



07B Silver Medium



07C Silver Dark



07D Silver Sky



08A Sunwash Light



08B Sunwash Medium



08C Sunwash Dark



08A Sunwash Ochre





## ON DEMAND™ CARPET TILES

Description:	Textured loop pile carpet tile
Fiber:	BCF 2-ply premium nylon
Backing:	Accentuate™ Cushion
Anti-Stain Protection:	Impervion® soil and stain protection
Traffic:	Commercial
Indoor Air Quality:	Green Label Plus Certified
Flammability:	>0.45 watts/cm2 (ASTM-E648, Class 1)
Origin:	U.S.A.
Warranty:	Lifetime Face Fiber Wear

Detailed specifications and warranties can be found at [joycarpets.com/resources](http://joycarpets.com/resources)

Specifications are subject to normal manufacturing tolerance.  
Actual carpet color may vary slightly from product photo.

©2020 Joy Carpets & Co. all rights reserved



# Joy Carpets & Co.

Joy Carpets & Co.  
2640 Lafayette Road  
Fort Oglethorpe, GA 30742  
800.645.2787  
[joycarpets.com](http://joycarpets.com)