



Joy Carpets & Co.

Neon Lights™

[fluorescent carpet for family entertainment centers]



BROADLOOM CARPET



LOOPED™ - 450

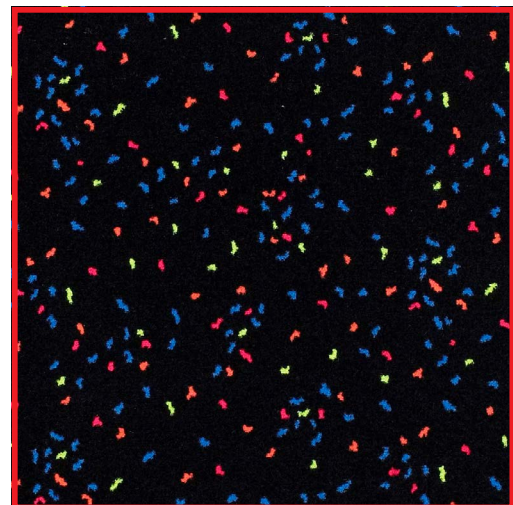
Neon Lights™ is an industry-leading collection of carpet designed for commercial amusement facilities and family entertainment centers. These designs combine stunning fluorescent colors and exceptional durability to create one of the most innovative and unique floor coverings available.



CELEBRATION™ - 361



RETRO BOWL™ - 448



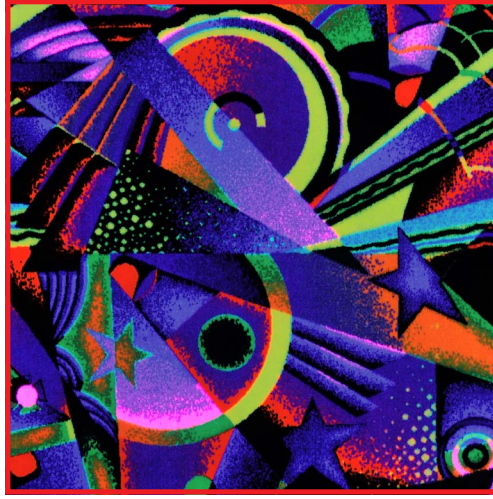
STARRY NIGHT™ - 391

LIGHTSPEED™
48 HOUR SHIPPING

- Soil and Stain Resistant
- For Heavy Commercial Use
- Class I Flammability



KAPOW™ - 449



MYSTIC™ - 461



SPACE EXPLORER™ - 431

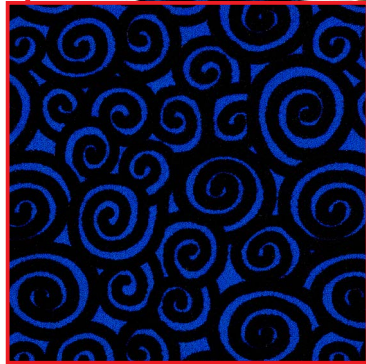
Manufactured with only the highest quality raw materials, Neon Lights™ is carpet that looks good, and can take it! Able to withstand the most demanding commercial environments, these carpets resist soil, stains, are easily cleaned, and are backed by comprehensive wear warranties for peace of mind.



DYNAMO™ - 455

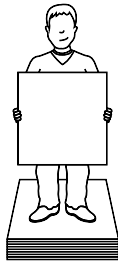


BIG BANG™ - 936



NEBULA™ - 932

1



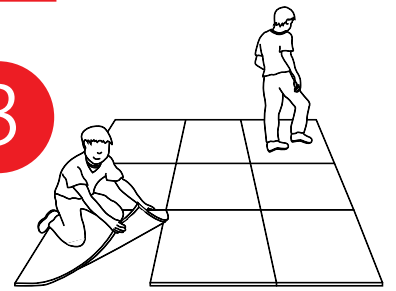
Easy to handle. No hassle!

2



Easy to install. No adhesives required!

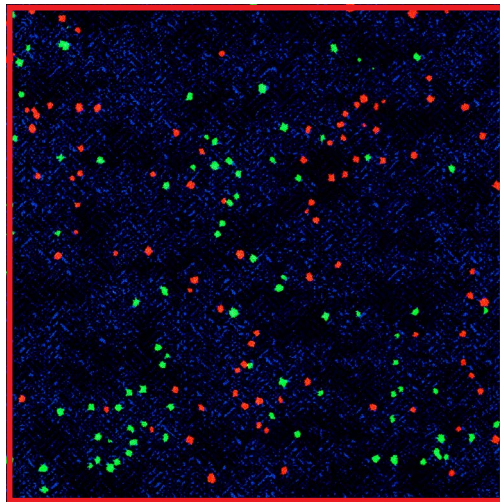
3



Easy to replace. No down time!



FRENCH QUARTER™ - 934



DEEP SPACE™ - 931



GRAND FINALE™ - 930

 CARPET TILE

- Guaranteed pattern match for seamless installation
- Integrated moisture barrier protects against spills
- Attached cushion provides support and longevity

Broadloom - Specifications and Warranties

General:

Description:	Cut pile broadloom
Dye Method:	Injection dyed
Dye Resolution:	256 dpi
Fiber:	Premium Continuous Filament Nylon
Total Weight:	18 oz. / sq. yd.
Tuft Bind:	Exceeds industry standards
Gauge:	1/10 th
Pile Height:	.186 in.
Primary Backing:	Woven polypropylene
Secondary Backing:	ActionBac
Secondary Backing (optional):	KangaTRAC polyurethane cushion
Delamination:	Exceeds industry standards
Anti-Soil and Stain Protection:	Impervion® soil and stain treatment
Antimicrobial Treatment:	Impervion® mold, mildew, and odor protection
Broadloom Width:	12'
Origin:	U.S.A.

Performance:

Static Electricity:	less than 3.5kv (permanent anti-static fiber)
Traffic:	Commercial
Indoor Air Quality:	Green Label Plus Certified

Specifications are subject to normal manufacturing tolerance.
Actual carpet color may vary.

Flammability:

Radiant Panel:	Class I
NBS Smoke Chamber:	less than 450

Maintenance:

Spot Cleaning:	Spot clean with approved carpet cleaner. Follow manufacturer recommendations. Vacuum regularly.
Professional Cleaning:	Hot water extraction. Follow manufacturer recommendations.

Warranties:

Limited Lifetime Commercial Wear
Limited Manufacturer Defects
Lifetime Antistatic Control
Fade Resistance (for indoor use only)
100% Recyclable



Carpet Tile - Specifications and Warranties

General:

Description:	Textured loop pile carpet tile
Dye Method:	Injection fluorescent dyed
Dye Resolution:	400 dpi
Fiber:	BCF Type 6,6 2-Ply Premium Nylon
Total Weight:	89 oz. / sq. yd.
Tuft Bind:	Exceeds industry standards
Gauge:	1/10 th
Pile Height:	.27 in.
Backing:	StayTac® cushion - PVC free. No adhesives required
Delamination:	Exceeds industry standards
Anti-Soil and Stain Protection:	Impervion® soil and stain treatment
Antimicrobial Treatment:	Impervion® mold, mildew, and odor protection
Tile Size:	1m x 1m (39.4" x 39.4")
Origin:	U.S.A.

Performance:

Static Electricity:	< 3.5 KV (AATCC-134), Permanent Conductive Fiber
Traffic:	Heavy commercial use
Indoor Air Quality:	Green Label Plus Certified



Specifications are subject to normal manufacturing tolerance.
Actual carpet color may vary.

Flammability:

Radiant Panel:	> 0.45 watts/cm ² (ASTM – E648, Class I)
NBS Smoke Chamber:	< 450 (ASTM-E662 NFPA-258)
Methenamine Tablet:	Self-extinguishing (CPSC FF-1-70)

Maintenance:

Spot Cleaning:	Spot clean with approved carpet cleaner. Follow manufacturer recommendations. Vacuum regularly.
Professional Cleaning:	Hot water extraction. Follow manufacturer recommendations.

Warranties:

Lifetime Face Fiber Wear	Lifetime Tuft Bind
Lifetime Antimicrobial Protection	Lifetime Color Pattern Permanency
Lifetime Soil and Stain Protection	Lifetime Cushion Resiliency
Lifetime Antistatic Protection	Lifetime Delamination
Lifetime Floor Compatibility	Lifetime Dimensional Stability
Lifetime Floor Release	Lifetime Edge Ravel
Lifetime Moisture Resistance	



Joy Carpets & Co.

corporate headquarters: 2640 Lafayette Rd. Fort Oglethorpe, GA 30742

distribution center: 104 West Forrest Rd. Fort Oglethorpe, GA 30742

phone: 800.645.2787 fax: 706.866.7928

www.joycarpets.com

©2018 joy carpets & co. all rights reserved